



**29th Annual  
Obstetrics, Gynecology & Women's Health  
Resident and Fellow Research Day**

**Thursday, May 9th, 2024**

University of Hawai'i  
John A. Burns School of Medicine  
Department of Obstetrics, Gynecology &  
Women's Health



The University of Hawai'i Department of Obstetrics, Gynecology & Women's Health would like to extend deepest thanks to all who made this 2024 Research Day possible.

**Research Day Committee:**

Resident Research Director:  
Shandhini Raidoo, MD, MPH

Mark Hiraoka, MD, MS

Bliss Kaneshiro, MD, MPH

Men-Jean Lee, MD

Reni Soon, MD, MPH

Steven Ward, PhD

Jonathan Riel, PhD

Mattias Atterbom

Darlene Hubbard

Krysten Kawamata

Lisa Kellett

Nao Kamakawiwoole

And all the mentors, assistants, and everyone else,  
who made these projects possible



**May 9, 2024**

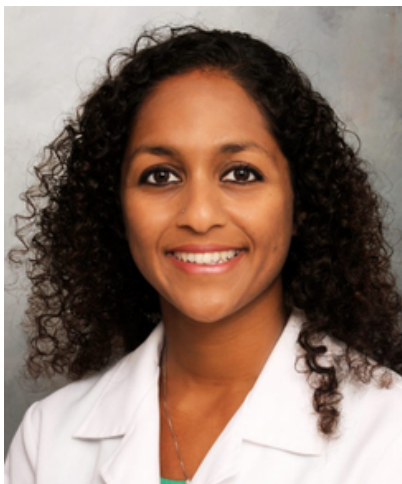
*Welina mai!*

*Welcome to the 29th Annual University of Hawai'i John A. Burns School of Medicine Department of Obstetrics, Gynecology, and Women's Health Research Day. We are grateful to gather so many of our departmental 'ohana here to celebrate our residents and fellows and their research accomplishments.*

*We appreciate the dedication and enthusiasm that each of you brings to your role in this department and your role in supporting our learners and improving the care that we provide to people in our community. We are thankful for your unwavering commitment to well-designed research to advance our field.*

*We extend our heartfelt gratitude to the Resident Research Committee and to all of the research mentors, who inspire and encourage their research mentees. Your contributions are instrumental in shaping the success of each of these projects, and we value your guidance and support.*

*We hope that this year's research presentations will be informative and inspiring, and that you will enjoy this time that we all spend together. Thank you again for being a part of this momentous occasion.*



**Shandhini Raidoo, MD, MPH**

Associate Professor  
Director of Resident Research  
Department of Obstetrics,  
Gynecology & Women's Health  
John A. Burns School of Medicine



**Ivica Zalud, MD, PhD**

Professor and Chair  
Kosasa Endowed Chair  
Department of Obstetrics,  
Gynecology & Women's Health  
John A. Burns School of Medicine  
University of Hawai'i

## Dedication



Dr. Keith Terada was born and raised in Hawaii. He attended Dartmouth College for his undergraduate studies and the University of Hawaii John A Burns School of Medicine for medical school. He completed his residency training in obstetrics and gynecology at the University of California Los Angeles and pursued fellowship training in gynecologic oncology at the University of Michigan Medical Center. After completing his training, Dr. Terada joined the University of Hawaii faculty, aiming to educate the next generation of physicians in the same community where he received his own education. He has served as a physician, teacher, mentor, and researcher in our department for 37 years. He has published over fifty original research articles and presented at numerous conferences. Dr. Terada has mentored multiple residents on their resident research projects, combining his passion for teaching with his love of research. Aside from his medical practice, Dr. Terada enjoys spending time with his family, including his wife, 3 children, and 4 grandchildren. He enjoys traveling internationally to Japan, and to visit his family on the continent.

## 2024 Judging Panel



Guest Judge & Visiting Professor

### **Cynthia Brincat, MD, PhD**

Professor and Chair of Obstetrics and Gynecology  
Rush University Medical Center



Dr. Brincat is a graduate of Loyola's Stritch School of Medicine. She completed her residency and fellowship at the University of Michigan. Prior to joining Rush in February 2018, she served on the faculty at the University of Wisconsin and Loyola. She presently serves as the Henry P. Russe, MD Dean (acting) of Rush Medical College. She is a practicing urogynecologist specializing in vaginal surgery. Prior to her role as Dean, she served as Department Chair of OBGYN and raised the visibility of Women's Health at Rush and worked collaboratively to increase quality and services, yielding a #13 ranking in US News and World Report (2020, 2022), and #1 in Illinois (2021, 2022).

Dr. Brincat has consistently served in leadership roles in the American College of Obstetricians and Gynecologists, from the National Board of Directors, to local and regional committee service. She is a general and sub-specialty board examiner and serves on committees that set the standards for certification in OB/GYN. She has received numerous awards for excellence in teaching and mentoring. She has an active research agenda, participates on NIH study sections and has been the principal investigator or co-investigator on multiple National Institutes of Health grants. She finds her work with the students, staff and faculty at Rush the most rewarding of her career.

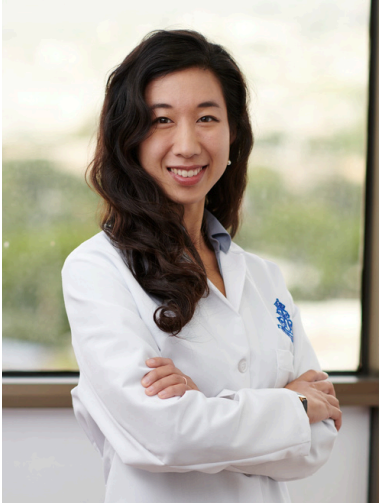


Judge

## **Stacy Brown, MD**

Assistant Professor, Department of Medicine

John A. Burns School of Medicine, University of Hawai'i



Stacy Brown is a neurointensivist at The Queen's Medical Center who specializes in neurologic emergencies and critical injuries to the nervous system. Outside of patient care, she serves as the Director of Neuroscience Research at Queen's and is an Assistant Professor of Medicine at the University of Hawaii John A. Burns School of Medicine. Her academic interests lie at the intersection of acute neurologic injury and population health. Dr. Brown received her undergraduate degree from Columbia University and her medical doctorate from Weill Cornell Medical College of Cornell University. She completed her post-graduate training in neurology and neurocritical care at Yale New Haven Hospital-Yale School of Medicine, where she also served as Chief Resident. She is the mother of a thriving one-year-old and a grateful former patient of the Ob/Gyn department.

---

Judge

## **Holly Fontenot, PhD, WHNP-BC, FAAN, FNAP**

Associate Dean of Research, Professor with Tenure & Frances A. Matsuda Chair in Women's Health  
University of Hawai'i at Mānoa



Holly Fontenot, PhD, RN/NP is the Associate Dean for Research, Professor and the Frances A. Masuda Chair in Women's Health at the UH Manoa School of Nursing. She also holds appointments as an Associate Member/Core Clinical Member at the University of Hawaii Cancer Center. She is a board certified women's health nurse practitioner. Dr. Fontenot's program of research focuses on reducing health disparities among women and adolescents. Her key areas of interest include adolescent and young adult vaccination and HPV-associated cancer prevention. Select and currently funded projects include: 1) clinician practices/opinions related to changes in the cervical cancer screening and management guidelines, 2) influence of social media on parental vaccine decision making for their children, and 3) parental

attitudes/beliefs related to age of routine HPV vaccination on series completion. Her teams have been funded by federal, foundation, and industry grants. Finally, she contributes to several national advisory boards including the CDC/ACIP, ACS National Roundtable on Cervical Cancer, and the Federal Cervical Cancer Collaborative Roundtable, plus she is a leader at the Society of Adolescent Health and Medicine and a Fellow in the American Academy of Nursing and the National Academies of Practice.

**University of Hawai'i**  
**Department of Obstetrics, Gynecology & Women's Health**  
**Research Day Schedule**



Thursday, May 9, 2024  
Honolulu Country Club

**8:15 am - 8:45 am    Welcome**

---

Housekeeping Honoring of Dedicatee	<b>Shandhini Raidoo, MD, MPH</b> Director of Resident Research Department of Obstetrics, Gynecology, and Women's Health
Remarks	<b>Ivica Zalud, MD, PhD</b> Chair Department of Obstetrics, Gynecology, and Women's Health
Words of Wisdom	<b>Lee Buenconsejo-Lum, MD</b> Interim Dean John A. Burns School of Medicine
Introduction of Judges Explanation of Presentation Format	<b>Shandhini Raidoo, MD, MPH</b>

**8:45 am - 10:45 am    Third Year Resident Presentations**

---

Introduction by research mentor (5 min), Presentation by third year resident (10 min), Q & A (5 min)

- 8:45 am    Introduction by Resident Research Mentor **Kimberly Nagamine, MD**  
"Association between Intraamniotic Infection and Endometritis"  
Presentation by Principal Investigator **Selin Kutlu, MD, MA**
- 9:05 am    Introduction by Resident Research Mentor **Shandhini Raidoo, MD, MPH**  
"Addressing Adolescent Sexual and Reproductive Health Needs during Inpatient  
Psychiatric Admission"  
Presentation by Principal Investigator **Radhika Amin, MD**
- 9:25 am    Introduction by Resident Research Mentor **Michele Pangilinan, MD**  
"Makua Allies: Peer Support for Pregnant, Postpartum, and Lactating People at  
A Substance Use Clinic in Hawai'i"  
Presentation by Principal Investigator **Avery Olson, MD**

**8:45 am - 10:45 am Third Year Resident Presentations**

---

- 9:45 am Introduction by Resident Research Mentor **Melissa Natavio, MD, MPH**  
“Modifiable Risk Factors for Pregnancy-Associated Hypertension Among Racial Subgroups in Hawai‘i”  
Presentation by Principal Investigator **Lea Lacar, MD**
- 10:05 am Introduction by Resident Research Mentor **Jeffrey Killeen, MD**  
“Identifying Indication for Cervical Biopsy or Treatment for Histologically Proven High Grade Intraepithelial Lesions in Hawaii”  
Presentation by Principal Investigator **Mary Tanner, MD**
- 10:25 am Introduction by Resident Research Mentor **Michele Pangilinan, MD**  
“Attitudes Related to Trauma Informed Care in Obstetrics and Gynecology”  
Presentation by Principal Investigator **Brooklyn Cochrane, MD**

**10:45 am - 10:55 am Break**

---

**10:55 am - 11:45 am Fellow Research Presentations**

---

Introduction by fellowship director (5 min), Presentation by fellow (15 min), Q & A (5 min)

- 10:55 am Introduction by MFM Fellowship Program Director **Men-Jean Lee, MD**  
“The Role of Vaccination in COVID-19 Antibody Transfer in Maternal Neonatal Dyads”  
Presentation by Principal Investigator **Cathlyn Sullivan, DO**  
*Third Year Maternal-Fetal Medicine Fellow*
- 11:20 am Introduction by CFP Fellowship Program Director **Reni Soon, MD, MPH**  
“Immediate Recall and Confidence of Medication Abortion Patients”  
Presentation by Principal Investigator **Tracy Chen, MD**  
*Second Year Complex Family Planning Fellow*

**11:45 am - 12:00 pm Closing Remarks and Presentation of Awards**

---

**Shandhini Raidoo, MD, MPH**

**12:00 pm - 1:00 pm Lunch**

---



# Selin Kutlu, MD, MA



**Medical School:** John A. Burns School of Medicine, University of Hawaii at Manoa, Honolulu, HI

**Medical School Honors/Awards:**

- Dean's Certificate of Distinction in Social Justice: Learned about social justice, educated students and community members, and applied concepts to clinical experiences

**Research Experience:**

- Medical Student Researcher, Gynecologic Oncology, John A. Burns School of Medicine, Department of Obstetrics, Gynecology and Women's Health, Honolulu, HI. Advisor: Professor and Vice Chair Keith Terada, MD.

Started to organize case report and researched literature to prepare to write a manuscript.

- Medical Student Researcher, Neurology, Hawaii Pacific Neuroscience, John A. Burns School of Medicine, Department of Medicine, Honolulu, HI. Advisor: Clinical Professor Kore K. Liow, MD, FACP, FAAN. Initiated and led project utilizing EEG to predict the onset of Alzheimer's disease in high risk patients. Mentored undergraduate and medical students on the clinical research process for their future careers.
- Medical Student Researcher, Neurology, John A. Burns School of Medicine, Department of Medicine, Honolulu, HI. Advisor: Assistant Professor J. Douglas Miles, MD, PhD. Surveyed neurologists in Hawaii to identify unique aspects of practice and address physician shortage. Collaborated with group of medical students to gather and analyze data, and wrote manuscript.
- Medical Student Researcher, Cancer Clinical Trials, Johns Hopkins University, School of Medicine, Bloomberg School of Public Health, Baltimore, MD. Advisor: Associate Professor Norma Kanarek, PhD, MPH. Examined the relationship between comorbidities and enrollment in cancer clinical trials. Analyzed database of over 17,000 patients and presented research at conferences to emphasize broadening eligibility.
- Medical Student Training in Aging Research Program, Johns Hopkins University, School of Medicine, Division of Geriatric Medicine and Gerontology, Baltimore, MD
- Program Directors: Samuel C. Durso, MD, MBA, AGSF, Colleen Christmas, MD, Sevil Yasar, MD, PhD. Participated in presentations discussing the formulation and execution of clinical research projects. Worked with physicians at the Memory and Alzheimer's Treatment Center, CSF Center, Osteoporosis Clinic, Program of All-Inclusive Care for the Elderly (Hopkins ElderPlus), Wound Clinic, Outpatient Cardiology Clinic, Pediatric Neuroradiology.

**Publications:**

- Kim, N.N., Tan, C., Ma, E., **Kutlu, S.**, Carrazana, E., Vimala, V., Viereck, J., Liow, K. (2023). Abnormal Temporal Slowing on EEG Findings in Preclinical Alzheimer's Disease Patients with the ApoE4 Allele: A Pilot Study. *Cureus*, 15(10): e47852. DOI: 10.7759/cureus.47852.
- Smith, M., Tse, C.E., Fancher, N., Hiroi, R., Harris, W.B., **Kutlu, S.**, Anzai, N.E., Miura, H., Chang, B.K., Miles, J.D. (2021). Lack of Native Hawaiian Neurologists and Disparities in Care for Native Hawaiians in Hawai'i. *Pacific Health Dialog*, 21(7), 415-420. DOI: 10.26635/phd.2021.108.
- **Kutlu, S.**, Harris, W.B., Tse, C.E., Anzai, N.E., Miura, H., Chang, B.K., Miles, J.D. (2020). Neurologist Attitudes on Practicing in Hawai'i. *Hawai'i Journal of Health & Social Welfare*, 79(12), 340-346. PMID: 33313515.

**Book/Book Chapter:**

- **Kutlu, S.** (2017). Investigating the Intersection between DNA Mismatch Repair and Triplet Nucleotide Repeat Expansion [Master's thesis, E-book]. Wesleyan University. <https://doi.org/10.14418/wes01.2.159>.

## Abstracts:

- Carrazana E., Kim N., Tan C, Ma E., Kutlu S., Mitchell C., Viereck J., Vajjala V., Liow K. (2022). Evaluating Whether EEG Could Predict Alzheimer's Disease Onset in Preclinical Patients with the apoe4 Allele: An Update [Abstract]. American Epilepsy Society.
- Ma E., **Kutlu S.**, Kim N., Mitchell C., Vajjala V., Carrazana E., Viereck J., Liow K. (2021). Evaluating whether EEG could predict Alzheimer's disease onset in preclinical patients with the ApoE4 allele [Abstract]. Alzheimer's Dement., 17(Suppl. 5), e049677.
- Anzai N.E., Chang B.C., Harris W.B., **Kutlu S.**, Miura H., Tse C.E., Miles J.D. (2019). Physician Attitudes on Practicing Neurology in Hawai'i [Abstract] (p. 2). The Hawai'i Neurological Society: 5th Annual Poster Session.
- **Kutlu S.**, Lansey D.G., Kanarek N.F. (2019). The relationship between comorbidities and enrollment in cancer clinical trials by age at diagnosis [Abstract]. Journal of the American Geriatrics Society, 67(S1), S301.
- **Kutlu S.**, Lansey D.G., Kanarek N.F. (2019). The relationship between comorbidities and enrollment in cancer clinical trials by age at diagnosis [Abstract] (p. 11). Hawai'i Chapter Scientific Meeting 2019: The Art of Being an Internist.
- Harris W., Miura H., Anzai N., **Kutlu S.**, Tse C., Miles J.D. (2018). Sense of Place: A History of Neurology in Hawai'i [Abstract] (p. 2). The Hawai'i Neurological Society: 4th Annual Poster Session.
- **Kutlu S.**, Case B., Hingorani M. (2016). Investigating the Intersection between DNA Mismatch Repair and Triplet Nucleotide Repeat Expansion [Abstract]. The FASEB Journal, 30(1\_supplement), 795-1.

## Presentations:

### Oral Presentation:

- **Kutlu S.**, Lansey D.G., Kanarek N.F. "The relationship between comorbidities and enrollment in cancer clinical trials by age at diagnosis". Hawaii Chapter Scientific Meeting of the American College of Physicians; 2019 February 23; Honolulu, HI.

### Poster Presentations:

- Carrazana E., Kim N., Tan C, Ma E., **Kutlu S.**, Mitchell C., Viereck J., Vajjala V., Liow K. "Evaluating Whether EEG Could Predict Alzheimer's Disease Onset in Preclinical Patients with the apoe4 Allele: An Update". American Epilepsy Society 2022 Annual Meeting; 2022 December 2 - 6; Nashville, TN.
- Ma E., **Kutlu S.**, Kim N., Mitchell C., Vajjala V., Carrazana E., Viereck J., Liow K. "Evaluating whether EEG could predict Alzheimer's disease onset in preclinical patients with the ApoE4 allele". Alzheimer's Association International Conference; 2021 July 26 - 29; Amsterdam, Netherlands.
- Tse C., Harris W., **Kutlu S.**, Miura H., Chang B., Anzai N., Miles J.D. "Physician Attitudes on Practicing Neurology in Hawai'i". Hawaii Neurological Society Annual Meeting; 2019 December 7; Honolulu, HI.
- **Kutlu S.**, Lansey D.G., Kanarek N.F. "The relationship between comorbidities and enrollment in cancer clinical trials by age at diagnosis". American Geriatrics Society 2019 Annual Scientific Meeting; 2019 May 1 - 4; Portland, OR.
- **Kutlu S.**, Lansey D.G., Kanarek N.F. "The relationship between comorbidities and enrollment in cancer clinical trials by age at diagnosis". Biomedical Sciences and Health Disparities Symposium; 2019 April 25 - 26; Honolulu, HI.
- Harris W., Miura H., Anzai N., **Kutlu S.**, Tse C., Miles J.D. "Sense of Place: A History of Neurology in Hawai'i". Hawaii Neurological Society Annual Meeting; 2018 December 1; Honolulu, HI.
- **Kutlu S.**, Case B., Hingorani M. "Investigating the Intersection between DNA Mismatch Repair and Triplet Nucleotide Repeat Expansion". American Society for Biochemistry and Molecular Biology Annual Meeting; 2016 April 2 - 6; San Diego, CA.

**Title:** Association between Intraamniotic Infection and Endometritis

**Authors:** Selin Kutlu, MD, MA; Kelly Yamasato, MD; Kimberly Nagamine, MD

**Objective:** Compare endometritis rates between those with and without intraamniotic infection (IAI) at term. Secondary objectives were to evaluate associations between IAI and other maternal complications and to identify potential risk factors for endometritis in the setting of IAI.

**Design:** Retrospective cohort study

**Methods:** This retrospective database review included patients with viable singleton pregnancies > 37 weeks gestation who delivered at Kapiolani Medical Center for Women and Children between October 2015 and July 2023. For those with multiple deliveries during the study interval, only the first delivery was included. IAI, endometritis, maternal sepsis, and ICU admission were identified by ICD-10 codes. Other data collected included maternal BMI at delivery, insurance type, hypertension, diabetes, amniotic fluid color at rupture of membranes, smoking status, and mode of delivery. Pearson chi-square or Wilcoxon rank-sum tests were used to (1) compare endometritis rates based on the diagnosis of IAI, (2) evaluate associations between endometritis and other maternal complications, and (3) assess for risk factors for endometritis in the setting of IAI. Logistic regression analyses were conducted to assess for potential confounders.

**Results:** A total of 29,652 patients were included, of whom 4,357 (14.7%) were diagnosed with IAI and 487 (1.6%) with endometritis in the same hospitalization. We found that 330 (1.3%) of patients without IAI were diagnosed with endometritis compared to 157 (3.6%) of patients with IAI ( $p < 0.001$ ). Patients with IAI were found to have nearly 3 times higher likelihood of being diagnosed with endometritis (OR 2.83 [95% CI 2.33-3.42]). This association persisted after adjusting for potential confounders (aOR 2.20 [95% CI 1.79-2.70]). Stratified by mode of delivery, IAI was associated with higher rates of endometritis for both cesarean (6.3% with IAI vs. 2.1% without IAI, OR 3.21 [95% CI 2.41-4.28]) and vaginal delivery (2.4% with IAI vs. 1.1% without IAI, OR 2.29 [95% CI 1.75-3.0]).

Patients with IAI were also 17 times more likely to be diagnosed with sepsis (0.9% with IAI vs. 0.1% without IAI, OR 17.2 [95% CI 9.58-32.6]) and nearly 4 times more likely to be admitted to the ICU (0.4% with IAI vs. 0.1% without IAI, OR 3.95 [95% CI 2.17-7.04]).

Among those with IAI, endometritis was significantly increased with cesarean delivery (OR 2.72 [95% CI 1.97-3.75]), nonclear amniotic fluid color (OR 1.52 [95% CI 1.08-2.10]), and public insurance (OR 2.29 [95% CI 1.66-3.16]).

**Conclusions:** This study demonstrates high rates of IAI diagnoses in our population, and that it is a significant risk factor for endometritis, maternal sepsis, and ICU admission. Other factors such as cesarean delivery and public insurance are also associated with higher rates of endometritis in the setting of IAI. These findings identify high risk populations who may potentially benefit from interventions to reduce complications and healthcare disparities.

**Support:** Department of Quantitative Services, John A. Burns School of Medicine

**Acknowledgements:** None

# Radhika Amin, MD



**Medical School:** Morehouse School of Medicine Atlanta, Georgia

**Medical School Honors/Awards:**

- Morehouse School of Medicine 100 Club Scholarship (2019)
- Morehouse School of Medicine Institute Merit Scholarship (2018)

**Research Experience:**

- Research Assistant, Department of Obstetrics and Gynecology, Morehouse School of Medicine, Atlanta, GA. Supervisor: Indrajit Chowdhury, PhD. Established adult rat uterus epithelial cell-derived organoid cultures to generate 3D cultures of the normal

endometrium and analyzed growth data when exposed to estrogen and progesterone. Developed a poster to present at the 2019 Curtis L. Parker Student Research Symposium.

**Presentations:**

- Chowdhury I, **Amin R**, Delsarte L, Keck K, Modeling Uterine Disorders Utilizing Adult Uterine Stem Cells; Presentation accepted at Endo 2020; March 28-31, 2020; San Francisco, CA
- **Amin R**, Delsarte L, Keck K. Estrogen induced expression of estrogen receptors in rat uterine organoids ex vivo. Poster presentation at 2019 Curtis L. Parker Student Research Symposium; February 13, 2019; Atlanta, GA [poster presentation]
- **Amin R**, Brune J, Delsarte L, Howard S, Kelly M, Maseri E, Crump SR, Hopkins J. How Physical Activity Influences Senior Citizen's Attitudes and Beliefs Towards Safety and Fitness. Poster presentation at Daniel S. Blumenthal Public Health Day; April 4, 2018; Atlanta, GA [poster presentation]

**Title:** Addressing Adolescent Sexual and Reproductive Health Needs during Inpatient Psychiatric Admission

**Authors:** Radhika Amin MD, Paris Stowers MD MSCTR, and Shandhini Raidoo MD MPH

**Objective:** Identify patient perceptions of the sexual and reproductive health (SRH) services that patients are receiving in Family Treatment Center (FTC), an inpatient adolescent psychiatric unit at The Queen's Medical Center in Honolulu, Hawai'i.

**Design:** Qualitative research study

**Methods:** We identified patients aged 14-19 admitted to the FTC who had received SRH care during their current admission by the ObGyn team at Queen's Medical Center for potential participation. Permission to approach patients was obtained from the patient's primary attending and written informed consent was obtained at the time of each interview. We conducted semi-structured interviews with adolescents about their experiences with SRH care until we achieved thematic saturation. The interviews were recorded and transcribed. We analyzed the transcriptions using the iterative process of content analysis to identify themes and relationships between ideas.

**Results:** Eleven adolescents were interviewed between November 2022 and December 2023. We collected patient demographics and clinical characteristics, including race, admission diagnosis, and SRH services received. Six themes were identified: (1) patients value healthcare providers' experience and expertise, (2) inpatient hospitalization is an appropriate time to address sexual and reproductive health needs, (3) interaction between mental health and decision making for sexual and reproductive choices is complex, (4) access to SRH care in outpatient setting is variable and dependent on social factors, (5) female family members are most often involved in SRH care and (6) most patients received sex ed in school and deemed school is an appropriate place to learn about SRH care despite some negative aspects to the school-based setting.

**Conclusions:** This study revealed the important role of healthcare providers in the inpatient setting and female family members in the outpatient setting in supporting adolescents with SRH needs. Healthcare providers are more easily accessible to adolescents during an inpatient admission and access in the outpatient setting is highly dependent on social support factors. The inpatient setting is a valuable place to address adolescents' SRH needs and should be linked to outpatient resources for continuity of care following hospital discharge.

**Support:** none

**Acknowledgements:** Family Treatment Center staff

# Avery Olson, MD



**Medical School:** University of South Dakota Sanford School of Medicine (USD SSOM)

**Medical School Honors/Awards:**

- Gold Humanism Honor Society Inductee (2020)
  - US Public Health Service National Award of Excellence (2020)
  - South Dakota State Medical Association Past Presidents Scholarship (2020)
  - Slingsby Scholarship (2018-2021)
  - Finley Scholarship (2020-2021)
  - Fromm Family Scholarship (2019-2020)
  - John & Ella Wahl Memorial Scholarship (2019-2020)
- Wulber Memorial Scholarship (2019-2020)
  - Scholarship Pathways Project (2018-2021)

**Research Experience:**

- Graduate Researcher, SSOM Scholarship Pathways Project. Evaluated provider and community interventions for lung cancer screening education provided by local nonprofit. Compiled data from hundreds of pre- and post-intervention surveys to evaluate success of intervention in rural western South Dakota in excel documents. Analyzed data for a presentation and article titled Lessons Learned to Increase Lung Cancer Screening Rates in Rural Western South Dakota.

**Publications:**

- Burhansstipanov, L. Braun, K., Blanchard, J., Petereit, D., **Olson, A. K.**, Sanderson, P. R., Joshweseoma, L. Hsu, C., Batai, K., Joshweseoma, L, Russell, D. Chapter 7: Successful Strategies: A Focus on Cancer, Survivorship through becoming a Thriver of Cancer. Burhansstipanov L and Braun KL, editors. Indigenous Public Health: Improvement through Community-Engaged Interventions.” University Press of Kentucky, Lexington, KY. 2022.
- **Olson, A. K.** (2020, January). The Ethics Behind Global Health Immersion in Guatemala: Strategies to Avoid Harmful Medical Voluntourism. South Dakota Medicine, 73(1), 4-5.
- **Olson, A. K.** (2020). Tale of Humor. In D.B. Azzam & A.N. Sharma (Eds.), Diary of a Med Student (1st ed.). Ingram Spark. In Press.
- **Olson A. K.**, Hansen K. (2020). Menstrual Migraines. South Dakota Medicine 2020. In Press.

**Presentations:**

- **Olson, A. K.** (2019, December). The Impact of Implementation of a Vertical Care Unit at a Community-Based Hospital. Poster session presented at HQIP Project Presentations, Rapid City, SD.
- **Olson, A. K.** (2019, November and 2020, July). A Global Perspective on Creating Community. PowerPoint presentation to American Association of University Women and Rotary Club of Rapid City, Rapid City, SD.
- **Olson, A. K.** (2019, October). Thunder Valley and Walking Forward: Looking Past the Rape Mentality on Pine Ridge Indian Reservation. Poster session presented at SSOM Cultural Immersion, Rapid City, SD.



**Title:** Makua Allies: Peer support for pregnant, postpartum, and lactating people at a substance use clinic in Hawai'i

**Authors:** Avery Olson, MD, Michele Pangilinan, MD

**Objective:** We designed this study to evaluate whether parent partner programs may be a valuable tool to increase prenatal care utilization and decrease substance use in pregnant, postpartum, and lactating people using substances.

**Design:** We conducted a single-center quasi-experimental study comparing a historical control group with a group enrolled in a peer support program (Makua Allies) at a clinic catering to pregnant individuals using substances in Honolulu, Hawai'i.

**Methods:** All data was gathered from the electronic medical record. The primary outcome was the proportion of antenatal appointments attended after initiation of care. Data was analyzed using Wilcoxon rank sum and Fisher's exact tests. Secondary outcomes included multiple maternal outcomes, neonatal outcomes, and substance use reduction.

**Results:** In the control group, we analyzed 209 patients from March 2017 to March 2022. The experimental group included 20 patients enrolled in Makua Allies. 68 pregnancies were excluded from the study including one in the experimental group and 67 in the control group (n=161). Exclusions were mostly due to lack of delivery information. In the control group, the average percentage of prenatal appointments attended (after presentation to care) was 86%, compared to 79% in the experimental group ( $p=0.777$ ). There was no statistically significant difference in maternal or neonatal outcomes between the two groups. While there was a higher proportion of persons using methamphetamines in the experimental group at baseline ( $p=0.045$ ), this reflects the target population for the study. The experimental group also showed an increase in attendance of postpartum visits compared to the control group (89%,  $p=0.741$ ).

**Conclusions:** There is similar prenatal care adherence in the parent partner program compared to those receiving standard of care at the same clinic. However, those in the program had higher rates of methamphetamine use at baseline. Those in the parent partner group also were more likely to attend a postpartum visit.

**Support:** H. T. Hayashi Foundation, University of Hawaii Biostatistics

**Acknowledgements:** Jennifer Elia, DrPH, EPIC Ohana

# Lea Lacar, MD



**Medical School:** John A. Burns School of Medicine, University of Hawai'i at Manoa, Honolulu, HI

## **Research Experience:**

- Research Assistant, University of Hawai'i Department of Obstetrics, Gynecology, & Women's Health, Honolulu, HI. "Abortion Database Project". Principle Investigator: Dr. Bliss Kaneshiro. Assist with data organization, survey creation, and chart review to investigate abortion data and disparities among ethnic groups in the local community.
- Research Assistant, University of Hawai'i Department of Obstetrics, Gynecology, & Women's Health, Honolulu, HI. "Gynuity No Test Medication Abortion Study", Principle Investigator: Dr. Bliss Kaneshiro. Local chart review and data collection of medical abortions and organization into larger national database.
- Research Assistant, University of Hawai'i Department of Obstetrics, Gynecology, & Women's Health, Honolulu, HI. "Pharmacy Access to Ulipristal Acetate in Small Cities Throughout the United States." Principle Investigator: Dr. Nikki Kumura. Participated as secret shopper by making phone calls to pharmacies across the United States inquiring about access and information about UPA at the pharmacy.
- Research Intern (partially paid position), University of Hawai'i Cancer Center, Honolulu, HI. Principle Investigator: Dr. James Turkson. Performed cell culture work, viability assays, colony survival assays to test compounds against cancer cell lines in the Natural Products and Experimental Therapeutics program. Paid position one semester, volunteer one semester.
- Summer Research Intern, Queen's Medical Center, Honolulu, HI. Principle Investigator: Dr. Linda Wong. Performed statistical analysis on UNOS data records for acute liver failure transplant recipients to investigate associated etiologies.

## **Publications:**

- Kerestes C, Murayama S, Tyson J, Natavio M, Seamon E, Raidoo S, **Lacar L**, Bowen E, Soon R, Platais I, Kaneshiro B, Stowers P. Provision of medication abortion in Hawai'i during COVID-19: Practical experience with multiple care delivery models. *Contraception*. 2021 Jul;104(1):49-53. doi: 10.1016/j.contraception.2021.03.025. Epub 2021 Mar 28. PMID: 33789080; PMCID: PMC8005318.
- Wong LL, Truong HP, Seto T, **Lacar L**, Naugler WE. Marked Decrease in Urgent Listing for Liver Transplantation Over Time. *Transplantation*. 2018;102(1):e18-e25. doi:10.1097/tp.0000000000001967. PMC ID: 28968354. Study of how the demand, characteristics, and outcomes for status-1 liver transplantation changed over time. Assisted with chart review, data organization, and statistical analysis.
- Wong LL, **Lacar L**, Roytman M, Orloff SL. Urgent Liver Transplantation for Dietary Supplements: An Under-Recognized Problem. *Transplantation Proceedings (Abstract)*. 2017;49(2):322-325. doi:10.1016/j.transproceed.2016.11.041. PMC ID: 28219592.

## **Presentations:**

- Herbal and Dietary Supplement Usage in U.S. Acute Liver Failure Transplant Recipients. Poster presentation from Queen's Summer Research Internship given at John A. Burns School of Medicine, Honolulu, HI.

**Title:** Modifiable Risk Factors for Pregnancy-Associated Hypertension Among Racial Subgroups in Hawai'i

**Authors:** Laurence Lea Lacar MD, Corrie Miller DO, Melissa Natavio MD MPH

**Objectives:** Identify modifiable prenatal factors associated with pregnancy-associated hypertension (PAH) across racial/ethnic groups in Hawaii.

**Design:** Retrospective cohort study

**Methods:** Using statewide birth certificate data, we analyzed all deliveries in Hawai'i from January 2014 to December 2019 for PAH prevalence among birthing persons and associations with obesity, adequacy of weight gain in pregnancy, WIC participation, smoking, assisted reproductive technology (ART), and prenatal visits using Chi-Square, ANOVA, and logistical regression statistics in SPSS 29.0. Twelve racial subgroups analyzed: Caucasian, Hawaiian/Part-Hawaiian, Chinese, Filipino, Japanese, Korean, Samoan, Black, Other Asian, Other Pacific Islander, Mixed (not including Part-Hawaiian), and Other.

**Results:**

Of the 106,494 deliveries, overall PAH prevalence was 7.2%. Of those with PAH, 42.3% were of mixed race, and 69.3% identified as part-Hawaiian (29.3% of the PAH group overall). Prevalence of PAH by racial group ranged from 0.8% Koreans and Other to 30.7% Hawaiian/Part-Hawaiians. An increased risk of PAH diagnosis was noted in those who identified as Filipino (OR 2.00) and Hawaiian/Part-Hawaiians (OR 1.41). The following risk factors differed among races:

- **Obesity:** Increased risk for all groups (especially in Chinese people, OR=3.72)
- **Weight Gain:** Excessive gain linked to PAH in most groups, especially Other Asian (OR=2.05) and Japanese people (OR 1.94) compared to those with normal weight gain. Weight loss/poor gain associated with reduced risk of PAH in most groups.
- **WIC:** Inverse association with PAH in multiple groups, especially in Chinese people (OR 0.23) but positive association in some groups such those who identified as Caucasian (OR 1.19).
- **Prenatal Visits:** A reduced risk of PAH was noted in some groups who attended 8-15 prenatal visits such as Hawaiian/Part-Hawaiian (OR 0.70) and Other Asian (OR 0.46).
- **ART:** Increased risk of PAH in those who identified as Other Asians (5.43), Caucasians (OR 2.27) and Japanese (OR 2.13).
- **Smoking:** increased risk for those who identified as Caucasian (OR 1.57) and Hawaiians/Part-Hawaiians (OR 1.47).

**Conclusions:**

PAH risk varied by race/ethnicity and modifiable factors. Targeted prenatal care for high-risk groups (e.g. attending at least 8 prenatal visits) may decrease PAH prevalence.

**Support:** None.

**Acknowledgements:** Office of Health Status Monitoring at the State of Hawaii Department of Health

# Mary Tanner, MD



**Medical School:** Louisiana State University School of Medicine, New Orleans

**Research Experience:**

- NuPotential Laboratory Technician, researched role of epigenetics on breast, cervical and gynecologic cell lines.

**Volunteering & Extracurricular:**

- St. Joseph Hospice- Carpenter House–direct care volunteer at inpatient hospice facility
- American Society for Biochemistry and Molecular Biology-LSU Chapter–Cofounder and Director of high school outreach

**Title:** Identifying Indication for Cervical Biopsy or Treatment for Histologically Proven High Grade Intraepithelial Lesions in Hawaii

**Authors:** Mary Tanner, MD, Jeffrey Killeen, MD

**Objective:** To describe the cervical cancer screening that led to biopsy proven high grade intraepithelial lesions in Hawai'i.

**Design:** Retrospective, observational study

**Methods:** Through Clinical Laboratories of Hawaii and the electronic medical record for Hawaii Pacific Health, we queried for histologically proven high grade dysplasias (HSIL or CIN II/III) and adenocarcinoma in situ (AIS) of the cervix identified from 2021 to 2023 within these systems. Of the 498 patients identified, 480 had prior cervical cancer screens that were accessible. Screening histories were reviewed using the 2021 ASCCP guidelines to determine indications for colposcopic biopsy or treatment.

**Results:** Out of 498 patients identified with high grade dysplasia or AIS on biopsy, 480 patients had cervical cancer screening results available for review. The current and prior cervical cancer screening were recorded. The cytology, HPV and cotest results were assessed separately to determine if there was one or more indication to proceed to colposcopy or treatment. "Abnormal HPV" was defined in this study as persistent high risk-HPV over two cervical cancer screening results or HPV-16, HPV-18 or HPV-45 on one cervical cancer screen; both are indications to proceed to colposcopy regardless of cotest or cytology results. Indication for biopsy were as follows: abnormal cytology for 96 patients (20.0%), abnormal HPV for 49 patients (10.2%), abnormal cotest for 51 patients (10.6%), abnormal HPV and cotest for 63 patients (13.1%), abnormal cotest and cytology for 96 patients (20.0%), and all three abnormal for 111 patients (23.1%). Additionally, there were 14 patients (2.9%) with unindicated biopsies of the cervix. If cytology alone had been performed, 39 patients (8.1%) would not have undergone necessary biopsies. If primary HPV testing had been performed, 9 patients (1.8%) would not have undergone necessary biopsy.

**Conclusions:** Following review of high-grade cervical biopsies obtained from 2021 to 2023, the absence of cotesting would have resulted in no colposcopy or treatment for select patients. Cytology alone predictably would have resulted in more instances of missed high grade lesions, but the added benefit of cotest compared to primary HPV testing is less clear.

**Support:** None

**Acknowledgements:** Clinical Laboratories of Hawaii

# Brooklyn Cochrane, MD



**Medical School:** University of New Mexico School of Medicine  
Albuquerque, New Mexico

**Medical School Honors/Awards:**

- John Philip Sousa Award for Music Excellence
- Papen Family Endowed Memorial Scholarship
- Caliente Community Chorus Scholarship
- New Mexico State University Honors Excel Scholarship
- Joy B Jefferson Commutative Scholarship

**Research and Poster Presentations:**

- **Cochrane B**, Pangilinan M. Trauma informed care education and attitudes among perinatal nursing staff. Presented at Biomedical Research and Innovation Grant Presentations 2023.
- **Cochrane B**, Collins R, Gragas A, Abella M, Casil P, Stafford M, Pawar D. Racial disparities in vaginal hysterectomy postoperative outcomes: trends using the NSQIP database [ID: 1377940]. *Obstetrics & Gynecology* 141(5S):p 18S-19S, May 2023. | DOI: 10.1097/01.AOG.0000929932.10093.83.
- **Cochrane B**, Pangilinan M, Kiyokawa M, Cape M. Home induction of buprenorphine for the treatment of kratom use disorder. Presented at California Society of Addiction Medicine Conference 2022.
- **Cochrane B**, Bartlett M, Pollat S, Browning C, Blackstone J. Massage therapy and its effects on high-risk obstetrical patients. Presented: University of New Mexico Research Day 2019.



**Title:** Attitudes Related to Trauma Informed Care in Obstetrics and Gynecology

**Authors:** Brooklyn Cochrane, MD, Chieko Kimata PhD, MPH, MBA, Michele Pangilinan, MD

**Objective:** Create and validate an evaluation tool of attitudes related to trauma-informed care (TIC) specific to healthcare providers in obstetrics and gynecology. The secondary objective is to understand the attitudes and knowledge of TIC by nurses in the women's service line currently working at Kapiolani Medical Center for Women and Children and Wilcox Medical Center

**Design:** Pilot survey validation study

**Methods:**

We developed a 35-question survey based on prior pediatric validated TIC tools and expert opinion. The survey was electronically administered to nursing staff prior to TIC training, immediately after training, and 6-months post-training. The questions were answered on a bipolar Likert scale containing TIC-favorable (positive), neutral, and TIC-unfavorable (negative) responses.

Questions were grouped into 6 themes:

1. Underlying causes of problem behaviors in patients
2. Responses to problem behaviors in patients
3. Self-efficacy at work related to TIC
4. Reactions to work
5. Personal support of TIC
6. Systems-wide support for TIC

The percentage of negative responses was compared across the three survey periods. Chi-square tests were used to determine if there was a significant difference in the distribution of negative responses for all three time points.

**Results:**

80 respondents completed all three surveys. Theme one, assessing underlying causes of problem behaviors in patients, had a 4.3% decrease in negative response ( $p = 0.0045$ ). However, this was not shown to be sustainable with the 6-month post training having a 8.8% increase in negative responses ( $p < 0.001$ ). Theme two, responses to problem behaviors in patients, had similar results with an initial 9.3% decrease ( $p = 0.009$ ) in negative responses, followed by a 7.7% increase at 6-months ( $p = 0.0052$ ). Self-efficacy at work related to TIC (theme 3), remained stable after TIC, but had 6.2% increase in negative responses at 6-months ( $p = 0.0012$ ). Theme 4, reactions to work, initially had a 4.7% decrease in negative responses ( $p = 0.0068$ ) followed by a 3.9% increase ( $p = 0.022$ ). Theme 5, personal support of TIC, had statistically similar negative responses during the initial evaluation, followed by a 4.7% increase in negative responses at 6-month follow-up ( $p = 0.013$ ). Systems wide support of TIC, theme 6, had a 5.1% decrease in negative responses ( $p = 0.048$ ), followed by a 13.5% increase in negative responses ( $p < 0.001$ ). Theme 6 was the only theme to have a significant increase in negative responses between the initial evaluation and the 6-month follow up ( $p = 0.0041$ ).

**Conclusion:**

This study demonstrates the ability of our survey to discern variances in perceptions and responses to patients' trauma, and TIC specific to the field of Ob/Gyn. Our survey revealed shortcomings about TIC attitudes and knowledge in our nurses, suggesting continued training at least every 6 months to improve knowledge and implementation of TIC. Evaluation of perceptions about TIC ensures the readiness, effectiveness, and sustainability of TIC in our health system.

**Support:** None

**Acknowledgments:** December Maxwell, PhD, MSW

# Cathlyn Sullivan, DO



**Fellow, Maternal-Fetal Medicine, Department of Obstetrics and Gynecology, John A. Burns School of Medicine (JABSOM), University of Hawai'i, Honolulu, HI**

**Ob-Gyn Residency:** Saint Joseph's Hospital OBGYN Residency, Denver, CO

**Ob-Gyn Residency Awards:**

- Residency Medical Student Teaching Award 2018-2019
- Obstetrics and Midwifery Award 2021

**Research Experience:**

- Primary Investigator, University of Hawai'i, Honolulu, HI. Bioscience and clinical research: Covid-19 Viral Immunity in Expectant Mothers and Neonates-IRB approved 5/2022 and recruitment proceeded from 10/2022-1/2024. This was a retrospective cohort study ongoing with the aim to determine optimal timing of booster vaccine. Mentor: Dr. Men Jean Lee. Bioscience mentor: Dr. Vivek Nerurkar PhD, University of Hawaii Department of Tropical Medicine.
- In training investigator, University of Hawai'i, Honolulu, HI. Public Health: Analysis of Digital Equity in Communities Reliant on Telehealth. Mentor: Dr. Men Jean Lee.
- Quality improvement: Collaborated with Department head of Labor and Delivery, Dr. Kelly Yamasato, MD. University of Hawai'i, Honolulu, HI. Protocol to reduce IV infection rate at Kapiolani Medical Center for Women and Children. Protocol for Hemorrhage risk in antepartum and laboring patients at Kapiolani Medical Center for Women and Children. Formalization of fetal anomaly clinic presentation, documentation and collaboration with specialists. Quarterly RCA review by MFM fellows.
- Denver-Area Continuum: Maternal Mental Health Project. Intermountain Health at Saint Joseph's Hospital Denver, CO. Team member for a grant distributed to in-network OBGYN and family medicine clinics. The team tracked perinatal mental health screening and referrals with added resources from the grant. Pulled and analyzed data over a 2 year period of universal depression screening and association with preterm birth and low birth weight.
- Comparison of Hemoglobin A1C and the 1-Hour Glucose Challenge Testing, Intermountain Health at Saint Joseph's Hospital Denver, CO. Reanalyzed data on early 1 hr testing and comparison to Hemoglobin A1c. Mentoring current residents to pull more data to better power the study prior to attempted publication.

**Publications:**

- COVID-19 infection presenting as pancreatitis in a pregnant woman: A case report. Women's Health. July 2020. Co-author. Rabice, Gagnon, Sullivan et al.
- Multiple Sclerosis and Pregnancy Planning. Uptodate.com. Primary author. September 2022
- Multiple Sclerosis and Pregnancy Management. Uptodate.com. Primary author. September 2022.
- Telehealth, A Hawaiian Perspective. Journal of Perinatology. Primary author. December 2022.
- Integrating mobile and portable technologies with in-person and telehealth care to overcome the digital divide and increase perinatal health care equity for the unstably housed on the island of Oahu. Journal of Perinatal and Neonatal Nursing. 37:1 2022. Co-author.
- Patient Perceptions of a Model of Street Health Care in O'ahu. Journal of Obstetric, Gynecologic & Neonatal Nursing. 51. S21-S22. 10.1016/j.jogn.2022.05.033. July 2022. Primary author.
- A Case of Monochorionic-Diamniotic Twin Pregnancy with Differing Phenotypic Sex. Gynecology and Women's Health Care. In Press. Primary author.

- Telemedicine Systems for Unreached Communities Context, Challenges and Opportunities. Chapter Title: Telehealth for the Pregnant Woman in Underserved Communities. A University of Hawaii and Pacific Basin Telehealth Resource Center Collaboration. In Press. Primary author.

**Presentations:**

- “Comprehensive Sexual Education and Legislation.” 2019 ACOG Congressional Leadership Conference. Washington DC 2019 Primary Presenter
- “Denver-Area Continuum: Maternal Mental Health Project.” 2019 SCL Health Perinatal Collaborative in Denver, CO 2019 Co-presenter
- “Autoimmune Disease Masquerading as HELLP.” Harvey Cohen, MD Morbidity and Mortality Summit Fall 2019. Denver, CO.
- “The Unexpected Placenta Accreta: Use of Safety Bundles to reduce Postpartum Hemorrhage.” Harvey Cohen, MD Morbidity and Mortality Summit Fall 2021. Denver, CO. Co-presenter.
- “Maternal Morbidity and Mortality in the State of Hawaii.” Legislative Day 2022 ACOG Presentation. Honolulu, HI. Primary Presenter
- “The Role of Vaccination in Maternal Fetal Dyads In SARS-CoV2 Antibody Transfer.” Society of Reproductive Investigation Annual Meeting 2024. Vancouver BC, Canada. Primary author and President’s Award Recipient bestowed on meritorious abstracts for presenters still in-training.

**Posters:**

- Society of Reproductive Investigation Annual Meeting 2024. Perinatal COVID-19 Vaccine Uptake in a Pacific Islander Population by Social Determinants. Vancouver BC, Canada. Primary author.
- Society for Maternal Fetal Medicine Annual Meeting 2023 in San Francisco, CA. A Comparison of Hemoglobin A1C and the 1-Hour Glucose Challenge Testing In Early Pregnancy. Society of Maternal Fetal Medicine Meeting 2023. San Francisco, CA. Primary author.
- University of Hawaii JABSOM Biomedical Symposium 2022. Honolulu, HI. Street Health Care for Maternity Patients on Oahu. Primary Author.
- American Institute of Ultrasound Medicine Conference 2022. San Diego, CA. A Case of Monochorionic Diamniotic Twin Pregnancy with Differing Phenotypic Sex. Presenting Author.
- Society for Maternal Fetal Medicine Annual Meeting 2022. Orlando, Florida. Evaluating preterm birth rates by racial group in Hawaii. Secondary Author.
- Society for Maternal Fetal Medicine Annual Meeting 2020. Galveston TX. Correlation of Universal Screening for Perinatal Mood Disorders with Gestational Age at Delivery and Birth Weight. Primary author.

**Title:** The Role of Vaccination in COVID-19 Antibody Transfer in Maternal Neonatal Dyads

**Authors:** Cathlyn Sullivan, DO, Deepraj Pawar, MD, Wu Hongwen, Joannath Riel, PhD, Lauren Ching, BS, Vivek Nerurkar, PhD, Alanna Tseng, BS, Eileen Nakano, BS, Marguerite Cazin, BS, Megan Stevenson, MD, Men- Jean Lee, MD

**Objective:** This project aimed to quantify the transplacental passage of SARS-CoV-2 antibodies in maternal neonatal dyads following vaccination versus natural infection.

**Design:** This was a cross-sectional cohort study of maternal and neonatal cord blood samples. The primary outcome was to compare levels of antibodies in the following categories: most recent infection versus vaccination and maternal blood versus cord blood.

**Methods:** A cross-sectional cohort study from 12/1/2022-3/30/2023 analyzed antibody responses to SARS-CoV-2 mRNA vaccination (primary 2-dose series of Pfizer-BioNTech or Moderna mRNA-1273 vaccine, or a Johnson and Johnson vaccine) in pregnant participants and in corresponding neonatal cord blood. We aimed to correlate the duration of vaccination from delivery with levels of IgG Spike1 protein with consideration of IgG Nucleocapsid from infection. Serial dilutions and Mean Fluorescence (MFI) were run with antibody assays on maternal-neonatal dyads. xMAP SARS-CoV-2 Luminex multi-antigen assays of IgG Spike 1 and IgG Nucleocapsid were used.

Locally weighted scatter plot smoothing (LOWESS) of serial dilutions was performed to analyze best fit of the mother and cord samples. Highest concentration points that did not fit were excluded and differences greater than 20% in MFI were noted. Continuous variables were analyzed with Pearson correlation (rp) and categorical with Chi-squared analysis. Corresponding maternal and neonatal antibody responses were analyzed by the time and duration since the last vaccination or by duration since documented natural infection.

**Results:** 35 maternal neonatal dyads were collected. Hypertension and diabetes were the only comorbidities noted. Area under the curve was most correlated for the Nucleocapsid antibody at rp of 0.90 with 95% CI 0.80-0.95. The antibody measure of vaccinated transplacental immunity, Spike 1 had an rp of 0.69 with a 95% CI of 0.47-0.83. The “best fit” lines of the LOWESS curves for serial dilution showed a trend for vaccination in the second trimester. Non-vaccinated patients (n=3) showed an S-shape curve Anti-SARS-2 Spike 1 curve similar to the shape of the corresponding Anti-SARS-2 Nucleocapsid curve. Dyads with lower neonatal MFI thus antibody binding showed a duration of greater than 500 days since last vaccination. Discrepancy of over 20% between maternal and neonatal MFI was noted in 4 dyads who were unvaccinated (n=1) or >400 days had since last vaccination (n=3).

**Conclusions:** Pregnant individuals vaccinated in the first and second trimesters of pregnancy show the highest level of transplacental transfer of antibodies to the naïve fetus to provide passive immunity for the transition to the extrauterine viruses. Our study supports that COVID-19 vaccination, whether a booster of primary series, should occur during pregnancy.

**Support:** Financial support from the research fund of University of Hawaii at JABSOM MFM department. Supplies given for sample collection from University of Hawaii Department of Tropical Disease. Biostatistics consult conducted with Ryland Chong PHD of The School of Natural Sciences and Mathematics of Chaminade University.

**Acknowledgements:** I would like to acknowledge the entire research team including authors. Outside of authorship, I would like to acknowledge the mentorship of Dr. Corrie Miller DO, Dr. Kelly Yamasato MD, Dr. Lisa Bartholomew MD and Dr. Stacy Tsai MD in study design and recruitment protocol. Similarly, I would like to acknowledge the advice and enthusiasm of Dr. Kevin Saiki and Dr. Melanie Makin in study timing and design. I would like to acknowledge the great efforts of the University of Hawaii OB generalists, residents doctors, and Kapiolani Family Birth Center nurses for following collection protocol for maternal and cord blood samples.

# Tracy Chen, MD



**Fellow, Complex Family Planning, Department of Obstetrics, Gynecology & Women's Health, John A. Burns School of Medicine (JABSOM), University of Hawai'i, Honolulu, HI**

**Ob-Gyn Residency:** Thomas Jefferson University Hospital, Department of Obstetrics and Gynecology, Philadelphia, PA

**Research Experience:**

- "Family Planning and Sexual Reproductive Health Attitudes among Asian American Native Hawaiian Pacific Islander (AANHPI) Women in the U.S." Oregon Health Science University.

Principal investigator: Rachel Shin, MD, MPH. Descriptive cross-sectional and qualitative study examining mental health, COVID-related racism, contraception, and abortion attitudes among Asian-American, Native Hawaiian, and Pacific Islander women in the United States, with recruitment performed through social media platforms.

- "Re-evaluating Interpregnancy Interval and Maternal and Infant Health Disparities." John A. Burns School of Medicine, University of Hawaii. Principal investigators: Mary Tschann, PhD, MPH; Reni Soon, MD, MPH. Retrospective cohort study evaluating if short interpregnancy interval (<18 months) influences preterm birth, low-birth weight, and infant mortality rates in Hawaii, with the goal to identify maternal outcomes associated with poor birth outcomes and work with the Hawaii Maternal and Infant Health Collaborative to develop interventions that reflect those findings.
- "Prevalence of Self-Managed Abortion Among Women of Reproductive Age in the United States." Advancing New Standards in Reproductive Health, Bixby Center for Global Reproductive Health. Principal investigator: Lauren Ralph, PhD. Cross-sectional survey study estimating the prevalence of SMA attempts among the general US population. A sub-analysis of this study is to be performed looking specifically at herbal methods of self-managed abortion.
- "Antepartum Screening and Evaluation for Postpartum Long-Acting Reversible Contraception (LARC) Device Placement" Thomas Jefferson University Hospital. Principal investigator: Lisa Perriera, MD, MPH. Quality improvement project that implemented an antepartum workflow to identify patients who desired immediate post-partum LARC and allow for greater uptake of Ryan program LARCs after delivery in an urban academic hospital.
- "Relationships between Breastfeeding and Maternal Mental Health" Baby Café at Women and Children's Hospital, Sisters Hospital, Durham's Central City Baby Café. Principal investigator: Faye Justicia-Linde, MD. Investigated how the length of time breastfeeding affected overall mental health and mental states during breastfeeding sessions, and assessed the satisfaction of mothers with baby cafés, which were part of Erie County's public initiative to encourage breastfeeding among the population.

**Publications:**

- Tschann, Mary PhD, MPH; Soon, Reni MD, MPH; **Chen, Tracy MD**. "Innovations in Medication Abortion: Reducing the Harms of Abortion Bans and Restrictions." Session [accepted], ACOG 2024 Annual Clinical and Scientific Meetings, May 17, 2024.
- **Chen TX**, Hamachi A, Soon R, Natavio M. Roots, Leaves, and Flowers: A Narrative Review of Herbs and Botanicals Used for Self-Managed Abortion in Asia and the Pacific. J Midwifery Womens Health. Published online September 5, 2023. doi:10.1111/jmwh.13561
- Pearlman Shapiro M, Myo M, **Chen T**, Nathan A, Raidoo S. Remote Provision of Medication Abortion and Contraception Through Telemedicine. Obstet Gynecol. 2023;141(6):1056-1061. doi:10.1097/AOG.0000000000005205



- Huntley B, Huntley E, Di Mascio D, **Chen T**, Berghella V, Chauhan S. Rates of Maternal and Perinatal Mortality and Vertical Transmission in Pregnancies Complicated by Severe Acute Respiratory Syndrome Coronavirus 2 (SARS-Co-V-2) Infection: A Systematic Review. *Obstet Gynecol.* 2020 Aug;136(2):303-312.

**Presentations:**

- **Chen, Tracy MD**; Soon, Reni MD, MPH. “Abortion, a Primer for the General OB/GYN.” Lecture, Tripler Army Medical Center, February 21, 2023.
- Moayed, Ghazaleh, DO MPH; Dethier, Divya, MD; **Chen, Tracy, MD**. “Controversies in Family Planning.” Panel discussion, Hawaii ACOG Section Annual Conference, November 13, 2023
- **Chen, Tracy MD**. “Is it okay if I’m chestfeeding? Contraception and Lactation.” Lecture, The Queens Medical Center OBGYN Grand Rounds, July 18, 2023.
- **Chen T**. Back to Basics. *Medical Economics*. 2020 Jan 25; 97(2). Honorable Mention in 2019 Physician Writing Contest.
- **Chen T**, Campbell L, Godcharles C, Perriera L. Antepartum Screening and Evaluation for Postpartum Long-Acting Reversible Contraception (LARC) Device Placement. ACOG District III Junior Fellow Day (inclusion in Abstract Booklet). Philadelphia, PA. October 11, 2019. 2nd Annual Arnold W. Cohen Philadelphia Scholarship Symposium (oral presentation). Einstein Medical Center. Philadelphia, PA. June 14th, 2019. Thomas Jefferson University Hospital: Department of OBGYN 30th Annual Resident and Fellow Research Day (oral presentation). Philadelphia, PA. April 18th, 2019. Thomas Jefferson University Hospital Annual Housestaff Quality Improvement and Patient Safety Poster Session (oral presentation). Philadelphia, PA. June 7th, 2018, and June 6th, 2019.
- **Chen T**, Justicia-Linde F. Relationships between Breastfeeding and Maternal Mental Health. 2016 Buffalo State College Annual Community Awareness of Perinatal Mood and Anxiety Disorders Event (oral presentation). April 15th, 2016. Healthy Start Healthy Future for All Coalition of the United Way of Buffalo and Erie County (oral presentation). Buffalo, NY. April 12th, 2016.



**Title:** Immediate Recall and Confidence of Medication Abortion Patients

**Authors:** Tracy X Chen, MD, Reni Soon, MD, MPH, Mary Tschann, PhD, MPH

**Objective:** To evaluate patients' immediate recall of medication abortion (MAB) knowledge and confidence immediately after their MAB appointment.

**Design:** Descriptive analysis of one cohort in an ongoing prospective non-inferiority study

**Methods:** The ongoing study compares MAB knowledge (consisting of indications/contraindication, medication administration instructions, and side effects/precautions) among nonpregnant individuals who had received advance provision of MAB (AP patients), and pregnant individuals who had received traditional, in-office provision of MAB (traditional patients). We enrolled a convenience sample of traditional patients at one clinical site in Honolulu, HI immediately after their appointment between April 2023 and March 2024. Patients completed a survey assessing their recall of the MAB administration instructions they had just received, including knowledge of MAB indications/contraindications, medication regimen administration, and side effects/precautions, as well as their confidence in their ability to correctly complete the medication regimen. Incidentally, the clinic modified its written instructions for readability approximately halfway through recruitment; we compared outcomes in the cohort before and after this change. Descriptive statistics were used to summarize patient demographics and survey responses. Statistical analysis was conducted using SPSS Statistics version 29.0.

**Results:** We surveyed 100 patients. Mean age was 27.9 years (SD 6.6), and 26 patients (26%) were nulliparous. Forty-seven (47%) had undergone an abortion before, and 32 patients (32%) had previously had a MAB. On average, patients correctly answered 79% (SD 18%) of questions about MAB indications/contraindications, 97% (SD 8.3%) of questions about medication regimen administration, and 93% (SD 11%) of questions about side effects/precautions; the overall average number of correct answers for all questions was 90% (SD 7.7%). Patients were completely or quite confident they could independently complete the process (n=95, 95%), teach a friend how to complete the process (n=86, 86%), recognize side effects (n=84, 84%), and seek emergency help when needed (n=95, 95%). Age, history of MAB, and the new MAB instructions were not associated with more accurate recall or higher confidence.

**Conclusions:** These findings may be a foundation for future studies that seek to compare the MAB knowledge and confidence of patients who pursue MAB outside of the clinic setting, such as advance provision or self-managed abortion, with that of traditional patients. Traditional patients were found to have high recall and confidence, which differs from findings with other patient populations.

**Support:** Lakshmi Devi and Devraj Sharma Endowed Research Fund

**Acknowledgements:** Zarina Wong and Taylor Ronquillo for their assistance with patient recruitment.

**Resident & Fellow Research Day 2024**  
**Research Productivity of UH OB/GYN**



To View the Google Drive containing the abstracts and posters presented by our residents, faculty, and fellows between May 2023 and May 2024, please follow the QR code below:



**Resident & Fellow Research Day 2024**  
**Research Productivity of UH OB/GYN**  
**Faculty, Fellows, Residents, and Medical Students**  
Publications May 2023 - April 2024



1. Köbel M, Kang EY, Weir A, Rambau PF, Lee CH, Nelson GS, Ghatage P, Meagher NS, Riggan MJ, Alsop J, Anglesio MS, Beckmann MW, Bisinotto C, Boisen M, Boros J, Brand AH, Brooks-Wilson A, **Carney ME**, Coulson P, Courtney-Brooks M, Cushing-Haugen KL, Cybulski C, Deen S, El-Bahrawy MA, Elishaev E, Erber R, Fereday S; AOCs Group; Fischer A, Gayther SA, Barquin-Garcia A, Gentry-Maharaj A, Gilks CB, Gronwald H, Grube M, Harnett PR, Harris HR, Hartkopf AD, Hartmann A, Hein A, Hendley J, Hernandez BY, Huang Y, Jakubowska A, Jimenez-Linan M, Jones ME, Kennedy CJ, Kluz T, Koziak JM, Lesnock J, Lester J, Lubiński J, Longacre TA, Lycke M, Mateoiu C, McCauley BM, McGuire V, Ney B, Olawaiye A, Orsulic S, Osorio A, Paz-Ares L, Ramón Y Cajal T, Rothstein JH, Ruebner M, Schoemaker MJ, Shah M, Sharma R, Sherman ME, Shvetsov YB, Singh N, Steed H, Storr SJ, Talhouk A, Traficante N, Wang C, Whitemore AS, Widschwendter M, Wilkens LR, Winham SJ, Benitez J, Berchuck A, Bowtell DD, Candido Dos Reis FJ, Campbell I, Cook LS, DeFazio A, Doherty JA, Fasching PA, Fortner RT, García MJ, Goodman MT, Goode EL, Gronwald J, Huntsman DG, Karlan BY, Kelemen LE, Kommoss S, Le ND, Martin SG, Menon U, Modugno F, Pharoah PD, Schildkraut JM, Sieh W, Staebler A, Sundfeldt K, Swerdlow AJ, Ramus SJ, Brenton JD. p53 and ovarian carcinoma survival: an Ovarian Tumor Tissue Analysis consortium study. *J Pathol Clin Res*. 2023 May;9(3):208-222. doi: 10.1002/cjp2.311. Epub 2023 Mar 22. PMID: 36948887; PMCID: PMC10073933.
2. **Wong JWH**, Gordon TS, Ramm O. Immune Hemolytic Anemia Associated with Prophylactic Use of Cefotetan during Pelvic Reconstructive Surgery: A Case Report and Review of the Literature. *Obstetrics and Gynaecology Cases- Reviews* 2023, May 19; 10:242. doi.org/10.23937/2377-9004/1410242
3. May T, Bernardini M, Lheureux S, Aben KKH, Bandera EV, Beckmann MW, Benitez J, Berchuck A, Børge L, **Carney ME**, Cramer DW, deFazio A, Dörk T, Eccles DM, Friedlander M, García MJ, Goode EL, Hein A, Høgdall CK, Jensen A, Johnatty S, Kennedy CJ, Kiemeny LA, Kjær SK, Kupryjańczyk J, Matsuo K, McGuire V, Modugno F, Paddock LE, Pejovic T, Phelan CM, Riggan MJ, Rodriguez-Antona C, Rothstein JH, Sieh W, Song H, Terry KL, van Altena AM, Vanderstichele A, Vergote I, Thomsen LCV, Webb PM, Wentzensen N, Wilkens LR, Ziogas A, Jiang H, Tone A; Ovarian Cancer Association and the Australian Ovarian Cancer Study Group. Clinical parameters affecting survival outcomes in patients with low-grade serous ovarian carcinoma: an international multicentre analysis. *Can J Surg*. 2023 Jun 27;66(3):E310-E320. doi: 10.1503/cjs.017020. PMID: 37369443; PMCID: PMC10310341.
4. **Stowers P**, Fontanilla T, Elia J, Salcedo J, **Kaneshiro B**, **Tschann M**, **Soon R**. A qualitative study of perspectives on research participation among individuals who recently experienced an abortion in Hawai'i. *Contraception*. 2023 Oct;126:110107. doi: 10.1016/j.contraception.2023.110107. Epub 2023 Jun 28. PMID: 37390947.
5. Pearlman Shapiro M, Myo M, **Chen T**, Nathan A, **Raidoo S**. Remote Provision of Medication Abortion and Contraception Through Telemedicine. *Obstetrics & Gynecology* 141(6):p 1056-1061, June 2023. | DOI: 10.1097/AOG.0000000000005205

6. **Stowers P**, Heck R, Csiszar K, **Kaneshiro B**. Just-world beliefs and community-level abortion stigma: An exploratory survey. *Contraception*. 2023 Jun;122:109979. doi: 10.1016/j.contraception.2023.109979.
7. **Tarleton C**, Tong W, McNeill E, Owda A, Barron B, Cunningham H. Preparing Medical Students for Anti-racism at the Bedside: Teaching Skills to Mitigate Racism and Bias in Clinical Encounters. *MedEdPORTAL*. 2023 Aug 10;19:11333. doi: 10.15766/mep\_2374-8265.11333. PMID: 37576358; PMCID: PMC10412739.
8. **Chen TX**, **Hamachi A**, **Soon R**, **Natavio M**. Roots, Leaves, and Flowers: A Narrative Review of Herbs and Botanicals Used for Self-Managed Abortion in Asia and the Pacific. *J Midwifery Womens Health*. 2023 Sep 5. doi: 10.1111/jmwh.13561. Epub ahead of print. PMID: 37668006.
9. Pearlman Shapiro M, **Stowers P**, **Raidoo S**. Contraception After Abortion. *Clin Obstet Gynecol*. 2023 Dec 1;66(4):749-758. doi: 10.1097/GRF.0000000000000809. Epub 2023 Sep 18. PMID: 37750667.
10. Kim NN, Tan C, Ma E, **Kutlu S**, Carrazana E, Vimala V, Viereck J, Liow K. Abnormal Temporal Slowing on EEG Findings in Preclinical Alzheimer's Disease Patients With the ApoE4 Allele: A Pilot Study. *Cureus*. 2023 Oct 28;15(10):e47852. doi: 10.7759/cureus.47852. PMID: 38021568; PMCID: PMC10679961.
11. Weingrill RB, **Lee MJ**, Benny P, Riel J, **Saiki K**, **Garcia J**, Oliveira LFAM, Fonseca EJDS, Souza ST, D'Amato FOS, Silva UR, Dutra ML, Marques ALX, Borbely AU, Urschitz J. Temporal trends in microplastic accumulation in placentas from pregnancies in Hawai'i. *Environ Int*. 2023 Oct;180:108220. doi: 10.1016/j.envint.2023.108220. Epub 2023 Sep 20. PMID: 37741006; PMCID: PMC10593309.
12. Heyrana KJ, **Kaneshiro B**, **Soon R**, Nguyen BT, **Natavio MF**. Data Equity for Asian American and Native Hawaiian and Other Pacific Islander People in Reproductive Health Research. *Obstet Gynecol*. 2023 Oct 1;142(4):787-794. doi: 10.1097/AOG.0000000000005340. Epub 2023 Sep 7. PMID: 37678914; PMCID: PMC10510826.
13. **Minaglia SM**. Small Bowel Obstruction After Colpopexy-Case Report and Images of the Mechanism. *Urogynecology (Phila)*. 2023 Sep 20. doi: 10.1097/SPV.0000000000001407. Epub ahead of print. PMID: 37737744.
14. Westin SN, Moore K, Chon HS, Lee JY, Thomes Pepin J, Sundborg M, Shai A, de la Garza J, Nishio S, Gold MA, Wang K, McIntyre K, Tillmanns TD, Blank SV, Liu JH, McCollum M, Contreras Mejia F, Nishikawa T, Pennington K, Novak Z, De Melo AC, Sehouli J, Klasa-Mazurkiewicz D, Papadimitriou C, Gil-Martin M, Brasiuniene B, Donnelly C, Del Rosario PM, Liu X, Van Nieuwenhuysen E; DUO-E Investigators. Durvalumab Plus Carboplatin/Paclitaxel Followed by Maintenance Durvalumab With or Without Olaparib as First-Line Treatment for Advanced Endometrial Cancer: The Phase III DUO-E Trial. *J Clin Oncol*. 2024 Jan 20;42(3):283-299. doi: 10.1200/JCO.23.02132. Epub 2023 Oct 21. PMID: 37864337; PMCID: PMC10824389. Note: **Carney ME**. is listed as a collaborator.
15. Phung MT, Lee AW, McLean K, Anton-Culver H, Bandera EV, **Carney ME**, Chang-Claude J, Cramer DW, Doherty JA, Fortner RT, Goodman MT, Harris HR, Jensen A, Modugno F, Moysich KB, Pharoah PDP, Qin B, Terry KL, Titus LJ, Webb PM, Wu AH, Zeinomar N, Zogas A, Berchuck A, Cho KR, Hanley GE, Meza R, Mukherjee B, Pike MC, Pearce CL, Trabert B. A framework for assessing interactions for risk stratification models: the example of ovarian cancer. *J Natl Cancer Inst*. 2023 Nov 8;115(11):1420-1426. doi: 10.1093/jnci/djad137. PMID: 37436712; PMCID: PMC10637032.

16. Saner FAM, Takahashi K, Budden T, Pandey A, Ariyaratne D, Zwimpfer TA, Meagher NS, Fereday S, Twomey L, Pishas KI, Hoang T, Bolithon A, Traficante N, Alsop K, Christie EL, Kang EY, Nelson GS, Ghatage P, Lee CH, Riggan MJ, Alsop J, Beckmann MW, Boros J, Brand AH, Brooks-Wilson A, **Carney ME**, Coulson P, Courtney-Brooks M, Cushing-Haugen KL, Cybulski C, El-Bahrawy MA, Elishaev E, Erber R, Gayther SA, Gentry-Maharaj A, Blake Gilks C, Harnett PR, Harris HR, Hartmann A, Hein A, Hendley J; AOCs Group; Hernandez BY, Jakubowska A, Jimenez-Linan M, Jones ME, Kaufmann SH, Kennedy CJ, Kluz T, Koziak JM, Kristjansdottir B, Le ND, Lener M, Lester J, Lubiński J, Mateoiu C, Orsulic S, Ruebner M, Schoemaker MJ, Shah M, Sharma R, Sherman ME, Shvetsov YB, Singh N, Rinda Soong T, Steed H, Sukumvanich P, Talhouk A, Taylor SE, Vierkant RA, Wang C, Widschwendter M, Wilkens LR, Winham SJ, Anglesio MS, Berchuck A, Brenton JD, Campbell I, Cook LS, Doherty JA, Fasching PA, Fortner RT, Goodman MT, Gronwald J, Huntsman DG, Karlan BY, Kelemen LE, Menon U, Modugno F, Pharoah PDP, Schildkraut JM, Sundfeldt K, Swerdlow AJ, Goode EL, DeFazio A, Köbel M, Ramus SJ, Bowtell DDL, Garsed DW. Concurrent RB1 loss and BRCA-deficiency predicts enhanced immunological response and long-term survival in tubo-ovarian high-grade serous carcinoma. medRxiv [Preprint]. 2023 Nov 10:2023.11.09.23298321. doi: 10.1101/2023.11.09.23298321. PMID: 37986741; PMCID: PMC10659507.
17. Nguyen H, Ribas-Maynou J, Wu H, Quon B, Inouye T, Walker B, Langaman C, **Huang TTF, Ward WS**. Low levels of mouse sperm chromatin fragmentation delay embryo development. Biol Reprod. 2023 Nov 15;109(5):635-643. doi: 10.1093/biolre/ioad106. PMID: 37658763; PMCID: PMC10651064.
18. Simien A, Zhao Q, Peipert LJ, Schreiber C, Teal S, Turok DK, **Natavio M**, Peipert JF. Association of Bacterial Vaginosis and Time to Conception & Infertility: A Prospective Cohort Study. Annals of Clinical Obstetrics and Gynecology. 2023, December 17; 2(1):1012.
19. **Ishii M, Albrecht S, Raidoo S, Stowers P**. Abortion education: teaching the next generation of clinicians. Discov Educ 2, Published December 19, 2023. <https://doi.org/10.1007/s44217-023-00080-9>
20. **Sasaki T, Kawamura M, Okuno C**, Lau K, Riel J, **Lee MJ, Miller C**. Impact of Maternal Mediterranean-Type Diet Adherence on Microbiota Composition and Epigenetic Programming of Offspring. Nutrients. 2023 Dec 22;16(1):47. doi: 10.3390/nu16010047. PMID: 38201877; PMCID: PMC10780434.
21. **Tschann MS**, Ronquillo TN, **Sternberg LM**, Wong ZJ, **Soon R, Kaneshiro BEK**. COVID-19 Vaccine Hesitancy in the Perinatal Period: A Survey Among Residents of Hawaii. AJPM Focus. 2023 Dec 23;3(2):100179.
22. Szczygieł HA, Ung A, Nguyen H, **Ward WS**. "Update on Torioid Linker Model for Sperm Chromatin". In: Carrell, D., Hotaling, J., & Pastuszak, A. (Eds.). Men's Reproductive and Sexual Health throughout the Lifespan: An Integrated Approach to Fertility, Sexual Function, and Vitality. Cambridge: Cambridge University Press. December, 2023. NIHMSID: 1901732
23. Fox KR, Kameoka AM, **Raidoo S, Soon R, Tschann M**, Fontanilla T, **Kaneshiro B**. Patient Barriers to Discontinuing Long-Acting Reversible Contraception. Matern Child Health J. 2023 Dec 29. doi: 10.1007/s10995-023-03878-z. Epub ahead of print. PMID: 38158476.
24. Ward MA, Roberts RM, **Ward WS**. Ryuzo Yanagimachi: Pioneer in fertilization and assisted reproductive biology technology. Proc Natl Acad Sci U S A. 2024 Jan 16;121(3):e2320501121. doi: 10.1073/pnas.2320501121. Epub 2024 Jan 8. PMID: 38190518; PMCID: PMC10801875.



25. Ralston NVC, Raymond LJ, Gilman CL, **Soon R**, Seale LA, Berry MJ. Maternal seafood consumption is associated with improved selenium status: Implications for child health. *Neurotoxicology*. 2024 Jan 23;101:26-35. doi: 10.1016/j.neuro.2024.01.003. Epub ahead of print. PMID: 38272071.
26. **Stowers PN**, Heck R, Csiszar K, **Kaneshiro B**. Just World Beliefs among Medical Students and the General Public in Hawai'i. *Hawaii J Health Soc Welf*. 2024 Jan;83(1):10-15. PMID: 38223461; PMCID: PMC10782388. doi:10.1016/j.focus.2023.100179. PMID: 38317785; PMCID: PMC10839259.
27. **Minaglia S**, Liegl M. Moonless night sky increases Isistius species (cookiecutter shark) and live human contact. *PLoS One*. 2024 Feb 21;19(2):e0291852. doi: 10.1371/journal.pone.0291852. PMID: 38381731; PMCID: PMC10880985.
28. Lu AMR, Lin B, Shahani D, Demertzis K, Muscat J, Zabel E, Olson P, **Manayan O**, Nonnamaker E, Fest J, McCue B. Randomized Control Trial Comparing Hygroscopic Cervical Dilators to Cervical Ripening Balloon for Outpatient Cervical Ripening (CORC Trial). *Am J Obstet Gynecol MFM*. 2024 Feb 26:101318. doi: 10.1016/j.ajogmf.2024.101318. Epub ahead of print. PMID: 38417552.
29. **Maykin MM**, **Mercer E**, **Saiki KM**, **Kaneshiro B**, **Miller CB**, **Tsai PS**. Furosemide to Lower Antenatal Severe Hypertension: A Randomized Placebo-Controlled Trial. *Am J Obstet Gynecol MFM*. 2024 Mar 12:101348. doi: 10.1016/j.ajogmf.2024.101348. Epub ahead of print. PMID: 38485054. Maykin MM, Mercer E, Saiki KM, Kaneshiro B, Miller CB, Tsai PS. Furosemide to Lower Antenatal Severe Hypertension: A Randomized Placebo-Controlled Trial. *Am J Obstet Gynecol MFM*. 2024 Mar 12:101348. doi: 10.1016/j.ajogmf.2024.101348. Epub ahead of print. PMID: 38485054.
30. Panova N, Goo C, Matsui F, **Stowers PN**. Perceived Value of a Women's Health Journal Club in Rural Hawai'i. *South Med J*. 2024 Mar;117(3):135-138. doi: 10.14423/SMJ.0000000000001658. PMID: 38428933.
31. Moayedi G, Lee S, **Soon R**, Kapua C, Sesepasara M, **Raidoo S**. Unmet Reproductive Health Needs of Transgender and Gender Diverse People in Hawai'i: A Qualitative Needs Assessment. *Hawaii J Health Soc Welf*. 2024 Mar;83(3):68-74. PMID: 38456161; PMCID: PMC10915862.
32. **Chen TX**. Utility of Office Hysteroscopy in Diagnosing Retained Products of Conception Following Early Pregnancy Loss After In Vitro Fertilization. *Obstet Gynecol*. 2024 Apr 1;143(4):e129. doi: 10.1097/AOG.0000000000005540. PMID: 38513247.
33. Roman M, Cruz MRD, **Soon R**, Ma C, Chen JJ. Understanding Factors Affecting Health Providers' Perceptions of Pharmacist Roles in HPV Vaccine Administration. *Hawaii J Health Soc Welf*. 2024 Apr;83(4):92-98. doi: 10.62547/RDRV2180. PMID: 38585287; PMCID: PMC10990833.



**Resident & Fellow Research Day 2024**  
**Department of OB/GYN Abstracts/Presentations**  
**Faculty, Fellows, Residents, and Medical Students**  
Presentations from May 2023 - April 2024



1. **Dethier D**, Wong Z, Ronquillo T, **Tschann M**, Roman M, Chen J, **Soon R**, **Kaneshiro B**. Self-performed blood typing: a promising adjunct for no-test and self-managed medication abortion. National Abortion Federation Annual Meeting, Apr 29 – May 2, 2023 [poster presentation].
2. **Pangilinan M**. Hawaii's Substance Use Epidemic: Bridging the gap of healthcare inequities for our underserved populations. Hawaii's Society of Obstetricians & Gynecologists 2023 Conference. Honolulu, HI. May 6, 2023 [oral presentations].
3. **Stowers P**. Rural Health Research in Hawaii. Hawaii Society of Obstetricians and Gynecologists 2023 Conference. Honolulu, HI. May 6, 2023 [oral presentation].
4. **Minaglia S**: Laparoscopic suturing course for resident surgeons (live pig lab). First Congress of the Bulgarian Association of Minimally Invasive and Robotic Surgery, Medical University, Pleven, Bulgaria, May 12-13, 2023 [oral presentation].
5. **Minaglia S**: Assessment of Urinary Tract Injury During Gynecologic Procedures. First Congress of the Bulgarian Association of Minimally Invasive and Robotic Surgery, Medical University, Pleven, Bulgaria, May 12-13, 2023 [oral presentation].
6. **Minaglia S**, et al. Surgical Surprises. First Congress of the Bulgarian Association of Minimally Invasive and Robotic Surgery, Medical University, Pleven, Bulgaria, May 12-13, 2023 [oral presentation].
7. **Seitz M**. An update on prolapse management. Kapiolani Medical Center for Women's and Children OBGYN Grand Rounds. May 17, 2023 [oral presentation].
8. **Sato D**, **Abella M**, **Pawar D**, **Stafford M**, Shirriff A, **Collins R**. Racial Disparities in Cesarean Delivery Outcomes: Analysis of Native Hawaiians or Pacific Islanders and American Indians or Alaska Natives. 2023 ACOG Annual Clinical & Scientific Meeting, May 19-21, 2023, Baltimore, MD [Abstract]
9. **Shirriff A**, **Abella M**, **Manayan O**, **Pawar D**, **Collins R**. Racial Disparities in Total Abdominal Hysterectomy Postoperative Outcomes: Analysis including American Indian or Alaska Natives and Native Hawaiian or Pacific Islanders. 2023 ACOG Annual Clinical & Scientific Meeting, May 19-21, 2023, Baltimore, MD [Abstract]
10. **Sato D**, **Abella M**, **Pawar D**, **Stafford M**, Shirriff A, **Collins R**. Racial Disparities in Cesarean Delivery Outcomes: Analysis of Native Hawaiians or Pacific Islanders and American Indians or Alaska Natives. 2023 ACOG Annual Clinical & Scientific Meeting, May 19-21, 2023, Baltimore, MD [Abstract]
11. Shirriff A, **Abella M**, **Manayan O**, **Pawar D**, **Collins R**. Racial Disparities in Total Abdominal Hysterectomy Postoperative Outcomes: Analysis including American Indian or Alaska Natives and Native Hawaiian or Pacific Islanders. 2023 ACOG Annual Clinical & Scientific Meeting, May 19-21, 2023, Baltimore, MD [Abstract]
12. **Wong J**, Vega S, Xu R, Weintraub R, Ritterman M, Ramm O, Zaritsky E. Increased Vaginal Cuff Dehiscence in Gender Diverse People on Testosterone. ACOG Annual Clinical Meeting. Baltimore, MD. May 19-21, 2023 [poster presentation].

13. **Molero Bravo R.** Medicare, Medicaid, and the Physician Shortage: Understanding Reimbursement Dynamics. Kapiolani Medical Center for Women's and Children OBGYN Grand Rounds. May 24, 2023 [oral presentation].
14. Alvarez RD, Riley LE, **Zalud I.** Recruitment, Retention and Retirement. 2023 CUCOG Annual Meeting, Baltimore MD. May 2023 [oral presentation].
15. **Malley A.** Menstrual Abnormalities in Adolescents: What is normal and what is not? Kapiolani Medical Center for Women's and Children Pediatrics Grand Rounds. June 1, 2023 [oral presentation].
16. **Mercer E.** Nonobstructive surgery in pregnancy. Queen's Medical Center Obstetrics and Gynecology Grand Rounds. June 5, 2023 [oral presentation].
17. **Nagamine K.** Postpartum Hemorrhage: A Review. Kapiolani Medical Center for Women's and Children OBGYN Grand Rounds. June 14, 2023 [oral presentation].
18. **Shields R.** Challenges and innovations in Rural OB/GYN. Queen's Medical Center Obstetrics and Gynecology Grand Rounds. June 19, 2023 [oral presentation].
19. Dever CO, Michel A, **Sullivan C, Lee MJ,** Fontenot H. Patient's perceptions on a model of street healthcare. The Association of Women's Health, Obstetric and Neonatal Nurses Conference, June 17-21 2023, New Orleans, Louisiana [poster presentation]
20. **Khozaim K.** Early effects of Dobbs Decision on OB/GYN workforce. Kapiolani Medical Center for Women's and Children OBGYN Grand Rounds. June 21, 2023 [oral presentation].
21. **Terada K.** Peripartum hysterectomy. Queen's Medical Center Obstetrics and Gynecology Grand Rounds. June 26, 2023 [oral presentation].
22. **Saiki K.** Placenta Accreta Spectrum: Diagnosis and Management. Kapiolani Medical Center for Women's and Children OBGYN Grand Rounds. June 28, 2023 [oral presentation].
23. **Stowers P.** Post-procedure restrictions: what's the evidence? Queen's Medical Center Obstetrics and Gynecology Grand Rounds. July 10, 2023 [oral presentation].
24. Nguyen H, Wu H, Uchida T, Leone G, **Ward WS.** "ORC1 is required for the first round of DNA synthesis in the Zygote". Annual Meeting of the Society for the Study of Reproduction. Ottawa, Canada, July 11-14, 2023 [poster presentation].
25. Wu H, Nguyen H, Prianka H, Fogelgren B, Eppig J, Duncan FE, **Ward WS.** "Oocyte-specific deletion of Exoc5 results in folliculogenesis defects, compromised egg quality, and accelerated ovarian aging". Annual Meeting of the Society for the Study of Reproduction. Ottawa, Canada, July 11-14, 2023 [poster presentation].
26. **Chang A.** Cervical Cancer Screening and Prevention. Kapiolani Medical Center for Women's and Children OBGYN Grand Rounds. July 12, 2023 [oral presentation].
27. **Otto A.** Beyond the basics of breastfeeding: Current perspectives and updates. Kapiolani Medical Center for Women's and Children OBGYN Grand Rounds. July 19, 2023 [oral presentation].
28. **Ebisutani K.** Obstetric Triage 808. Queen's Medical Center Obstetrics and Gynecology Grand Rounds. July 31, 2023 [oral presentation].
29. **Olson H,** Amdt R. Assessing interprofessional education in Hawai'i graduate medical education - insights from the Hawai'i interprofessional education committee. Kapiolani Medical Center for Women's and Children OBGYN Grand Rounds. August 9, 2023 [oral presentation].
30. **Soon R.** What's the deal with abortion medication: the status of mifepristone. Queen's Medical Center Obstetrics and Gynecology Grand Rounds. August 14, 2023 [oral presentation].
31. **Manayan O.** Think outside the states: the global state of abortion. Kapiolani Medical Center for Women's and Children OBGYN Grand Rounds. August 16, 2023 [oral presentation].

32. **Chen T.** A clinical reference guide on sexual devices for OBGYNs. Queen's Medical Center Obstetrics and Gynecology Grand Rounds. August 21, 2023 [oral presentation].
33. **Maykin M.** Is that safe for me and my baby? Medication safety for the pregnant and lactating individuals. Kapiolani Medical Center for Women's and Children OBGYN Grand Rounds. August 23, 2023 [oral presentation].
34. **Minaglia S:** Sacrocolpopexy and uterosacral colpopexy key points. 3rd International & Society of Robotic Surgery Latin America (LATAM) Robotic Surgery Congress, 2nd Colaboracion Latinoamericana de Cirugía Robótica (COLCIR) Congress. Rio de Janiero, Brazil, August 23-25, 2023 [oral presentation].
35. **Minaglia S:** Details for a good enterocele repair. 3rd International & Society of Robotic Surgery Latin America (LATAM) Robotic Surgery Congress, 2nd Colaboracion Latinoamericana de Cirugía Robótica (COLCIR) Congress. Rio de Janiero, Brazil, August 23-25, 2023 [oral presentation].
36. **Yang N.** Prevention of gynecologic surgery wound complications. Queen's Medical Center Obstetrics and Gynecology Grand Rounds. August 28, 2023 [oral presentation].
37. **Yang N, Pangilinan M.** Impact of Telehealth on Visit Attendance for Women with Opioid Use Disorder. California Society of Addiction Medicine Conference. August 30 - September 2, 2024 [poster presentation].
38. **Olson HL,** Arndt R. Assessing Interprofessional Education in Hawaii Graduate Medical Education - Insights from the Hawaii Interprofessional Education COmmittee. Orthopedic Surgery Grand Rounds, The Queen's Medical Center, Honolulu, HI. September 6, 2023 [oral presentation].
39. **Kim R.** The pain in your neck - surgical ergonomics. Queen's Medical Center Obstetrics and Gynecology Grand Rounds. September 11, 2023 [oral presentation].
40. **Minaglia S,** Brubaker L. Introduction to the Peer Reviewer Academy. Urogynecology virtual meeting, September 13-15, 2023 [oral presentation].
41. **Chen Y.** Nutrition in Pregnancy. Queen's Medical Center Obstetrics and Gynecology Grand Rounds. September 18, 2023 [oral presentation].
42. **Yang N.** Medical care for the limited english proficiency patient. Kapiolani Medical Center for Women's and Children OBGYN Grand Rounds. September 20, 2023 [oral presentation].
43. **Pangilinan M.** Trauma Informed Care: Education and Attitudes Among Perinatal Nursing Staff. Hawaii Pacific Health 2023 Biomedical Research & Innovation Center Scientific Presentation. Honolulu, HI. September 22, 2023 [oral presentation].
44. **Stowers P.** Supplement use among peri-menopausal and menopausal women on Hawaii Island. Hawaii Pacific Health 2023 Biomedical Research & Innovation Center Scientific Presentation. Honolulu, HI. September 22, 2023 [oral presentation].
45. **Zalud I.** Doppler on my Mind. Contemporary OB/GYN Ultrasound Conference. Honolulu, Hawaii. September 2023 [oral presentation].
46. **Wong J.** Urogynecology & reconstructive pelvic surgery: the basics and beyond! Queen's Medical Center Obstetrics and Gynecology Grand Rounds. June 5, 2023 [oral presentation]. Queen's Medical Center Obstetrics and Gynecology Grand Rounds. September 25, 2023 [oral presentation].
47. **Yamasato K.** Inpatient OB Updates. Kapiolani Medical Center for Women's and Children OBGYN Grand Rounds. September 27, 2023 [oral presentation].
48. **Stowers P, Stickley E.** Supplement use among peri-menopausal and menopausal women on Hawaii Island. North American Menopause Society Annual Meeting, Philadelphia PA. September 27, 2023 [poster presentation].

49. **Malley A.** Reproductive Health, Menstruation, and Menopause. National Hemophilia Foundation Women's Hemophilia Retreat. Honolulu HI. September 2023 [oral presentation].
50. **Stickley E,** Radzak D. Kapiolani Medical Center for Women's and Children OBGYN Grand Rounds. October 11, 2023 [oral presentation].
51. **Olson H.** Arndt R. Accessing interprofessional education in the Hawaii graduate medical education - insights from the HIIEC. Queen's Medical Center Obstetrics and Gynecology Grand Rounds. October 2, 2023 [oral presentation].
52. **Wong J,** Stram D, Patel M. Retropubic versus Transobturator Midurethral Sling with Concomitant Colpocleisis. AUGS Pelvic Floor Disorders Week. Portland, OR. October 3-7, 2023 [oral presentation].
53. **Wong J,** Stram D, Patel M. Transcutaneous Tibial Nerve Stimulation for the Maintenance Treatment of Overactive Bladder. AUGS Pelvic Floor Disorders Week. Portland, OR. October 3-7, 2023 [poster presentation].
54. **Stowers P.** Abortion care in the United States and the broader impact of abortion restrictions. John A. Burns School of Medicine Alumni Association Education Symposium, Las Vegas NV. October 8, 2023 [oral presentation]
55. **Manayan O.** Reading your own scans - a brief overview on abdominal and pelvic CT interpretations. Queen's Medical Center Obstetrics and Gynecology Grand Rounds. October 16, 2023 [oral presentation].
56. **Panginilan M.** Methamphetamines - the dark horse in the US drug overdose epidemic. Kapiolani Medical Center for Women's and Children OBGYN Grand Rounds. October 25, 2023 [oral presentation].
57. **Dethier D.** Wong Z, Ronquillo T, **Soon R, Tschann M.** Characteristics and outcomes of medication abortion patients at less than 6 weeks gestation. Society of Family Planning Annual Meeting. October 28-30, 2023. Seattle, WA [oral presentation].
58. Lee H, Gotwalt J, Morikawa K, **Tschann M,** Bullock H. That's a tricky one: access to misoprostol for early pregnancy loss in retail pharmacies across Arizona. Society of Family Planning Annual Meeting. October 28-30, 2023. Seattle, WA [poster presentation].
59. **Kim R.** "Multiport Hysterectomy." ACOG Hawaii Annual Conference. Honolulu, Hawaii. November 10, 2023 [oral presentation]
60. **Miller C.** "Stayin' Alive" - Management of arrhythmias in pregnancy. Kapiolani Medical Center for Women's and Children OBGYN Grand Rounds. November 11, 2023 [oral presentation].
61. **Oyama I.** "UTIs: Regular and recurrent." Kapiolani Medical Center for Women's and Children OBGYN Grand Rounds. November 11, 2023 [oral presentation].
62. **Panginilan M.** Screening tools for substance use disorders. ACOG Hawaii Section Meeting 2023. Honolulu, HI. November 12, 2023 [oral presentation].
63. **Ayabe A.** Postpartum Depression. Queen's Medical Center Obstetrics and Gynecology Grand Rounds. November 27, 2023 [oral presentation].
64. **Collins R.** "Is there a doctor on board?": Plane Medicine. Kapiolani Medical Center for Women's and Children OBGYN Grand Rounds. November 29, 2023 [oral presentation].
65. **Miller C.** Epigenetic Variation and Social Vulnerability Associations with Preterm Birth in Hawaii. Preterm Birth International Collaborative (PREBIC) North America Meeting. Mexico City, Mexico. November 2023 [oral presentation].
66. **Zalud I.** Doppler on my Mind. Visiting Professor, Lenox Hill Hospital, New York. November 2023 [oral presentation].



67. **Malley A.** Go the Distance: Relative Energy Deficiency in Sport (RED-S) and the Female Athlete Triad. American Academy of Pediatrics, Hawaii Chapter, Island-Style Conference November 2023 [conference worship].
68. **Yixen C.** Nutrition in Pregnancy. Kapiolani Medical Center for Women's and Children OBGYN Grand Rounds. December 13, 2023 [oral presentation].
69. **Ebisutani K.** Medical curiosity: Pessaries. Queen's Medical Center Obstetrics and Gynecology Grand Rounds. December 18, 2023 [oral presentation].
70. **Stevenson M.** Severe Hypertension in Pregnancy. Kapiolani Medical Center for Women's and Children OBGYN Grand Rounds. December 20, 2023 [oral presentation].
71. **Malley A.** Obstetric and Gynecologic considerations for the female athlete. Kapiolani Medical Center for Women's and Children OBGYN Grand Rounds. December 27, 2023 [oral presentation].
72. **Wong, J.** Gender Affirming Care for the Gynecologist. University of Hawaii, Complex Family Planning Fellowship. Honolulu, HI. December 2023 [oral presentation]
73. **Kessel B,** Pham J, Sadler M. Patient Safety: Medication errors. Queen's Medical Center Obstetrics and Gynecology Grand Rounds. January 8, 2024 [oral presentation].
74. **Villarin M.** Happy Hour: A Review of Alcohol Use. Kapiolani Medical Center for Women's and Children OBGYN Grand Rounds. January 10, 2024 [oral presentation].
75. **Sullivan C.** Wildfire exposure in pregnancy. Kapiolani Medical Center for Women's and Children OBGYN Grand Rounds. January 17, 2024 [oral presentation].
76. **Ebisutani K.** Medical curiosity: Pessaries. Kapiolani Medical Center for Women's and Children OBGYN Grand Rounds. January 24, 2024 [oral presentation].
77. Sautter C. **Shields R.** Bogaert K, Erickson A, Autry M. Increasing Obstetrician Gynecologists in Medically Underserved Communities through the HEAL Fellowship. CREOG & APGO Annual Meeting. San Antonio, TX. February 28, 2024 [poster presentation]
78. **Stevenson M.** Hypertension in Pregnancy. Queen's Medical Center Obstetrics and Gynecology Grand Rounds. January 29, 2024 [oral presentation].
79. **Aeby T.** A perfect storm in the pearl of Africa: Tales of a Muzungu OB/GYN in Uganda. Kapiolani Medical Center for Women's and Children OBGYN Grand Rounds. January 31, 2024 [oral presentation].
80. **Saito-Tom L,** Aytac G, Kalehuawehe K, Pagat S, Kawelo M, Lozanoff S. COVID-19 Curricular Innovations: Efficacy of Pre-clerkship Hybrid Case-based Female Pelvic Anatomy Curriculum. Health Professions Education Conference 2024, Honolulu, HI February 10, 2024 [oral presentation]
81. Iwamoto L, **Olson HL,** Steinemann S, Costa CA. Who are you calling DIFFICULT? Preparing Learners to care for ALL Patients. Health Professions Education Conference. Honolulu, HI. February 10, 2024 [conference workshop].
82. **Garcia J.** Laurito J, **Yamasato K,** Ohta T, Caeton C, Riel J, **Lee MJ.** Obstetrical and Perinatal Trends in Hawai'i from 2019 to 2023. Society of Maternal Fetal Medicine Pregnancy Meeting. February 10-14, 2024 [poster presentation].
83. **Miller C,** Benny P, Riel J, **Lee MJ.** Maternal Epigenetic Variation among Pregnant Persons Experiencing Preterm Birth in Hawai'i. Society of Maternal Fetal Medicine Pregnancy Meeting. February 10-14, 2024 [poster presentation].
84. **Ayabe A.** I miss me: peripartum depression. Kapiolani Medical Center for Women's and Children OBGYN Grand Rounds. February 14, 2024 [oral presentation].
85. Nyquist JG, **Olson HL.** Emotional Intelligence for a Diverse Workshop. Innovations in Medical Education. Los Angeles CA. February 15, 2024 [conference workshop].

86. **Stowers P.** Clinical implications of pubic hair growth and removal. Kapiolani Medical Center for Women's and Children OBGYN Grand Rounds. February 21, 2024 [oral presentation].
87. **Chen Y.** Food and nutrition in the perioperative setting. Queen's Medical Center Obstetrics and Gynecology Grand Rounds. February, 2026 [oral presentation].
88. **Malley A.** Relative Energy Deficiency in Sport (RED-S) and the Female and Male Athlete Triad, University of Hawaii Athletic Department Therapist. February 2024 [oral presentation].
89. **Chen Y.** Food and nutrition in the perioperative setting. Queen's Medical Center Obstetrics and Gynecology Grand Rounds. February 26, 2024 [oral presentation].
90. **Bartholemew L.** Biochemical Drug Screening in Obstetrics and Gynecology. Kapiolani Medical Center for Women's and Children OBGYN Grand Rounds. February 28, 2024 [oral presentation].
91. Sautter C. **Shields R.** Bogaert K, Erickson A, Autry M. Increasing Obstetrician Gynecologists in Medically Underserved Communities through the HEAL Fellowship. CREOG & APGO Annual Meeting. San Antonio, TX. February 28, 2024 [poster presentation]
92. **Saito-Tom L,** Aytac G, Kalehuawehe K, Pagat S, Lozanoff S. COVID-19 Curricular Innovations: Efficacy of Pre-clerkship Hybrid Case-based Female Pelvic Anatomy Curriculum. Council on Resident Education in Obstetrics and Gynecology (CREOG) & Association of Professors of Gynecology and Obstetrics (APGO) Annual Meeting, San Antonio, TX. February 28 - March 2, 2024 [oral presentation].
93. Seto J, **Olson H,** Ramirez M, Beals J, Lian KC, Seto T, Steinemann S. Impact of a Commensality Group on Physician Collegiality and Resilience in a Multi-Specialty Academic Medical Practice. ACGME Annual Education Conference, Orlando FL. March 7, 2024 [poster presentation].
94. **Wong J.** Please Hold: Urinary Urgency, Frequency and Incontinence. University of Hawaii, Department of Geriatric Medicine. Honolulu, HI. March 2024 [oral presentation]
95. **Raidoo S, Stowers P,** Salcedo J. Emergency Contraception for 2024 - Optimizing your patient's plan B. North American Society for Pediatric and Adolescent Gynecology's 2024 Annual Clinical & Research Meeting. Orlando, FL. April 4, 2024 [conference workshop].
96. Davis C, Sato D, Fontanilla T, **Raidoo S.** Let's Talk About Sex: College Students' Experiences of School-Based Sex Education in Hawaii. North American Society for Pediatrics & Adolescent Gynecology 38th Annual Clinical and Research Meeting. Orlando, FL. April 4-6, 2024 [poster presentation].
97. **Ing L.** Thyroid Disease in Pregnancy. Queen's Medical Center Obstetrics and Gynecology Grand Rounds. March 11, 2024 [oral presentation].
98. **Sullivan C.** The Role of Vaccination in Maternal Fetal Dyads in SARS-CoV2 Antibody Transfer. Society of Reproductive Investigation Annual Meeting. Vancouver BC, Canada. March 12-16, 2024 [oral presentation].
99. **Sullivan C.** Perinatal COVID-19 Vaccine Uptake in a Pacific Islander Population by Social Determinants. Society of Reproductive Investigation Annual Meeting. Vancouver BC, Canada. March 12-16, 2024 [poster presentation].
100. **Saito-Tom L.** We are ALL Clinical Educators: Self-assessment, why does it matter? Kapiolani Medical Center for Women's and Children OBGYN Grand Rounds. March 13, 2024 [oral presentation].
101. **Yang N.** Medical Care for the Limited English Proficient Patient. Queen's Medical Center Obstetrics and Gynecology Grand Rounds. March 18, 2024 [oral presentation].
102. **Mercer E.** Fetal Surgery: The basics and caring for these patients after surgery. Kapiolani Medical Center for Women's and Children OBGYN Grand Rounds. March 20, 2024 [oral presentation].



103. **Garcia J.** Houselessness and Pregnancy. Kapiolani Medical Center for Women's and Children OBGYN Grand Rounds. March 20, 2024 [oral presentation].
104. **Tsai PJS, Pangilinan M.** SBIRT: Practice makes Progress. Queen's Medical Center Obstetrics and Gynecology Grand Rounds. March 25, 2024 [oral presentation].
105. **Suetsugu T.** Outside the (hormone) box: increasing your comfort with non-hormonal management of GYN concerns. Queen's Medical Center Obstetrics and Gynecology Grand Rounds. April 1, 2024 [oral presentation].
106. **Yang N, Pangilinan M.** Impact of Telehealth on Visit Attendance for Women with Opioid Use Disorder. American Society of Addiction Medicine Conference. April 5, 2024 [poster presentation].
107. **Yang N.** Consent First: Reviewing a Urine Drug Screen Protocol on Labor and Delivery. American Society of Addiction Medicine Conference. April 5, 2024 [poster presentation].
108. **Xiong L.** Managing Endometriosis. Queen's Medical Center Obstetrics and Gynecology Grand Rounds. April 8, 2024 [oral presentation].
109. **Lee P.** Advancements and Challenges in Gynecologic Oncology Cancer Care: Clinical Trial Outcomes, Molecular Tumor Testing, and Areas for Improvement. Kapiolani Medical Center for Women's and Children OBGYN Grand Rounds. April 10, 2024 [oral presentation].
110. **DiMarchi J.** Eponymous Obstetrics & Gynecology. Kapiolani Medical Center for Women's and Children OBGYN Grand Rounds. April 24, 2024 [oral presentation].
111. **Tschann M, Soon R, Chen T.** Innovations in Medication Abortion: Reducing the Harms of Abortion Bans and Restrictions. Session [accepted], ACOG 2024 Annual Clinical and Scientific Meetings, May 17, 2024.

## Past Research Day Guest Speakers



- 2023 James H. Liu, MD, Chair, Professor Emeritus, Department of Reproductive Biology  
Case Western Reserve University School of Medicine
- 2022 Lawrence D. Platt, MD, Clinical Professor of Obstetrics and Gynecology, David Geffen  
School of Medicine at UCLA
- 2021 Philip D. Darney, MD, MSc, Distinguished Professor, Department of Obstetrics,  
Gynecology & Reproductive Sciences, Bixby Center for Global Reproductive Health,  
University of California San Francisco
- 2019 Matthew Barber, MD, MHS, Chair, Department of Obstetrics and Gynecology, Duke  
University, Durham, North Carolina
- 2018 Dev Maulik, MD, PhD, Senior Associate Dean of women's Health, Professor & Chair,  
Department of Obstetrics and Gynecology, University of Kansas, Kansas City, Kansas
- 2017 Eve Espey, MD, Professor and Chair, Department of Obstetrics and Gynecology,  
University of New Mexico, Albuquerque, New Mexico
- 2016 Haywood L. Brown, MD, FACOG, F. Bayward Charter Professor & Chair, Obstetrics  
and Gynecology Department/Division: Obstetrics/Gynecology/Maternal Fetal  
Medicine, Duke University School of Medicine, Durham, North Carolina
- 2015 Barbara S. Levy, MD, Vice President for Health Policy, Advocacy Division at the  
American College of Obstetricians and Gynecologists (ACOG), Washington, DC
- 2014 Daniel M. Breitkopf, MD, Associate Professor & Ob/Gyn Residency Program  
Director, Department of Obstetrics and Gynecology, Mayo Clinic, Rochester,  
Minnesota
- 2013 Aaron B. Caughey, MD, MPA, MPH, PhD, Professor and Chair, Department of  
Obstetrics and Gynecology, Oregon Health & Science University, Portland, Oregon,

## Past Research Day Award Recipients



### Santosh S. Sharma, MD Resident Research Award [for submission for publication]

- 2023 **Elizabeth Mercer, MD**, *“Placenta previa: is follow-up always needed?”*
- 2022 **Ingrid Chern, MD**, *“The evolution of gestational in a multi-racial population: Racial/ethnic differences in gestational diabetes and its association with maternal and neonatal outcomes among women in Hawai‘i”*
- Alyssa Malley, MD**, *“Characteristics, Complications, and Outcomes of Pregnant Planned Home Birth”*
- 2021 **Christina Buchanan, MD**, *“Neonatal Hypoxic Ischemic Encephalopathy and Planned Home Birth”*
- Pamela Estrada, MD**, *“Racial and Ethnic Disparities in Intensive Care Admission in a Pregnant and Postpartum Population”*
- 2020 **Jennifer Chin, MD**, *“Buffered Lidocaine for Paracervical Blocks in First Trimester Outpatient Surgical Abortions”*
- Nikki Kumura, MD**, *“Pharmacy Access to Ulipristal Acetate in Small Cities Throughout the United States”*
- Caroline Lau, MD**, *“Duration of foley catheter cervical ripening as a predictor of total length of labor”*
- 2019 **Sally Markee, MD**, *“Tumor suppressor gene and mismatch repair protein expression in uterine sarcomas and carcinosarcomas”*

### First Place Award

- 2023 **Asia Ayabe, MD**, *“Adherence to 2019 ASCCP Cervical Cancer Screening Guidelines”*
- 2022 **Elizabeth Mercer, MD**, *“Placenta previa: is follow-up always needed?”*
- 2021 **Ingrid Chern, MD**, *“Racial/ethnic differences in gestational diabetes and the association with maternal and neonatal outcomes among women in Hawai‘i”*
- 2020 **Sharareh Firouzbakht, MD**, *“Abortion knowledge affecting abortion provision after obstetrics and gynecology residency”*
- 2019 **Jennifer Chin, MD**, *“Buffered lidocaine for paracervical blocks in first trimester outpatient surgical abortions”*

2018 **Meryl Ueno, MD**, *“Association between Second Trimester Maternal Serum Analytes and Gestational Diabetes”*

2017 **Charlie Wang, MD**, *“Utility of Routine Collection of Chlamydia and Gonorrhea in Antepartum Patients”*

Honorable Mention:

**Nicole Kurata, MD**, *“Prolonged Interpregnancy Interval: Essential Nullipara Again?”*

2016 **Sara C. Harris, MD**, *“Levonorgestrel Intrauterine Device Expulsion in Patients with Abnormal Uterine Bleeding”*

**Audience Choice Award**

2023 **Megan Stevenson, MD**, *“Exploring factors that impact health and wellness among Native Hawaiian and Pacific Islander young women in Hawai‘i using PhotoVoice”*

2022 **Elizabeth Mercer, MD**, *“Placenta previa: is follow-up always needed?”*

2021 **Ingrid Chern, MD**, *“Racial/ethnic differences in gestational diabetes and the association with maternal and neonatal outcomes among women in Hawai‘i”*

2020 **Christina Buchanan, MD**, *“Neonatal Hypoxic Ischemic Encephalopathy and Planned Home Birth”*

2019 **Jennifer Chin, MD**, *“Buffered lidocaine for Paracervical blocks in first trimester outpatient surgical abortions”*

2018 **Meryl Ueno, MD**, *“Association between Second Trimester Maternal Serum Analytes and Gestational Diabetes”*

2017 **Charlie Wang, MD**, *“Utility of Routine Collection of Chlamydia and Gonorrhea in Antepartum Patients”*

2016 **Sara C. Harris, MD**, *“Levonorgestrel Intrauterine Device Expulsion in Patients with Abnormal Uterine Bleeding”*

**P. Gordon McLemore, Jr, MD**, *“Utilization of Abdominal Circumference (AC) Measurement in Fetal Biometry in the Late Second and Early Third Trimesters in the Prediction of Small for Gestational Age (SGA) Infants”*

## Past Research Day Honorees



- 2023 **Bruce Kessel, MD**
- 2022 **Ivica Zalud, MD**
- 2021 **Thomas Kosasa, MD**
- 2020 **All of Hawai'i's obstetrician-gynecologists who are on the COVID-19 frontlines**
- 2019 **Tricia Wright, MD**
- 2018 **Bliss Kaneshiro, MD, MPH**
- 2017 **Tod Aeby, MD, MEd**
- 2016 **Santosh Sharma, MD**
- 2015 **50th Anniversary of the John A. Burns School of Medicine**



University of Hawai'i  
John A. Burns School of Medicine  
Department of Obstetrics,  
Gynecology & Women's Health  
1319 Punahou Street, Suite 824  
Honolulu, Hawai'i 96826