

# Department of Obstetrics, Gynecology & Women's Health

University of Hawai'i  
John A. Burns School of Medicine



2022-2023  
ANNUAL REPORT



# Our Values, Vision & Mission

## Our Values

*Integrity*

*Excellence (E Kulia Ika Nu'u)*

## Our Vision

*Advancing Women's Health Care*

## Our Mission

*To advance women's health by promoting  
excellence in education, research, clinical care  
and community service in a sustainable fashion*

# ALOHA FROM THE CHAIR

We are all so painfully aware of an unimaginable tragedy from wildfires that spread uncontrollably on Maui and the Big Island on August 8, 2023. Historic and symbolic Lahaina is in ashes. Hawai'i's heart and soul are shaken but not broken, despite the enormous loss of lives and suffering. Prosperities and businesses have been destroyed, and hundreds of local families have been displaced. Our thoughts and prayers are going to families and friends shattered and desperate. Immediate needs can be addressed with the donation of monetary funds, so please consider helping via the Hawai'i Community Foundation (HCF). Our department and medical school have a longstanding partnership with HCF, a trusted organization that has served the community for more than 100 years, working to address the root causes of our state's most difficult challenges and stewarding funds in support of those efforts. HCF has activated its Maui Strong Fund to support residents affected by the Maui wildfires. The fund will provide resources that can be deployed quickly for disaster response and recovery, including shelter, food, financial assistance, and other services identified by partner organizations, which include state and county leaders, businesses, and other nonprofit groups doing critical work on Maui.

<https://www.hawaiicommunityfoundation.org/maui-strong>



*Lahaina: August 8, 2023*

If you would like to volunteer, please contact:

- American Red Cross:  
<https://www.redcross.org/volunteer/become-a-volunteer.html#step1>
- State of Hawaii, Office of Public Health, Medical Reserve Corps:  
<https://health.hawaii.gov/prepare/mrc/>

As always, through the turbulent Hawai'ian history, after the dark clouds disperse, our communities will emerge stronger and even more determined to continue the incredible legacy of this land and its people. The COVID-19 pandemic also continues to remind us so clearly of the true spirit of 'Ohana. Our department is determined to sustain this positive energy in transforming healthcare by investing in faculty and staff professional development, learners' engagement, patient safety and experience, and continuous quality improvement. We are committed to advancing women's health by promoting excellence in education, research, clinical care, and community service in a sustainable fashion. Our values of integrity and excellence are at the core of our journey of lifelong learning, discovery, healing, and community service.

We continue addressing healthcare disparities and open wounds of racial and social injustice so deeply and disproportionately affecting the most vulnerable: women and children. Last year, the US Supreme Court issued a ruling contrary to our perspective that each woman has the right to make her own health and reproductive decisions. Our department will continue providing a wide range of women's health services and advocating for access to safe and legal pregnancy termination as an option for each woman's reproductive health and family planning. As a teaching department, we will continue to train our learners in reproductive health, including abortions and family planning. As time passes, it is certain that more lessons will emerge. We are committed to ensuring that the OB/GYN academic clinical learning environment in the State of Hawai'i remains responsive to the needs of our community and current LCME/ACGME requirements.

Our departmental faculty and academic staff are now part of Hawai'i Pacific Health Medical Group (HPHMG) and Queen's University Medical Group (QUMG), forming for the first time the clinical OB/GYN department in each of these health systems, led by Dr. Bliss Kaneshiro on the QUMG side and myself on the HPHMG side. This strategic realignment is reflective of clinical contributions to two distinct health systems: Hawai'i Pacific Health and Queen's Health Systems. However, we remain a unified and never stronger academic department within our medical school. While change is not easy, it was necessary to ensure that our medical school and its clinical departments continue to thrive in a financially responsible and sustainable fashion. Our department, being embedded in two of the largest healthcare systems for our state, is well-positioned to further advance women's healthcare, as well as our academic clinical learning environment, for generations to come.

We continue to foster an environment of academic excellence. 32 faculty members have been promoted in the last 10 years. Most sincere congratulations to Drs. Ann Chang, Reni Soon, and Stacy Tsai on their academic promotions. Our faculty continue to hold leadership roles in major national and international organizations and peer-reviewed journals' Editorial Boards. Drs. Lynne Saito-Tom and Richard McCartin were elected as examiners by the American Board of OB/GYN, adding to the already elected within our department: Drs. Mark Hiraoka, Ann Chang, Bliss Kaneshiro, Holly Olson, and Tamarin McCartin. Dr. Men-Jean Lee was confirmed as a member of the ACGME Review Committee for Obstetrics and Gynecology. Dr. Reni Soon will be honored by the Society of Family Planning as this year's "Beacon of Science" awardee. Our department hired the

most-ever new faculty members over the past academic year. Drs. Abigail Otto, Alyssa Malley, Robert Collins, Tamarin McCartin, Jessica Johns, Ingrid Chern, Jackie Prestosa, and Ryan Shields all joined our Generalist division; Dr. Paula Lee joined our Gynecologic Oncology division; and Dr. Melanie Maykin joined our Maternal Fetal Medicine (MFM) division. Soon, we will welcome additional new faculty: Drs. Lucia Xiong and Lauren Ing are joining our Generalist division, Drs. Joy Vink and Kevin Saiki will join our MFM Division, and Dr. Jennifer Wong is joining our Urogynecology division. This is truly extraordinary growth in number of faculty and clinical/academic expertise for our department. Finally, after more than a decade of exemplary service, we recently celebrated the well-deserved retirements of Dr. Dena Towner, our former MFM Fellowship Program Director, philanthropist, and Associate Chair for Clinical Affairs, as well as Dr. Carol Fujiyoshi, our distinguished clinical faculty at Wilcox Medical Center, who spearheaded medical student and resident education in rural communities. Our department also created two new most senior departmental positions: Dr. Ann Chang will serve as Associate Chair for Community Partnerships, and Dr. Reni Soon will serve as Associate Chair for Native Hawai'ian Health and DEI. Our clinical faculty and philanthropist, Dr. Angela Pratt, is serving as Hawai'i Medical Association President. She was also honored

as this year's Healthcare Hero by the Healthcare Association of Hawai'i. Other highly respected clinical faculty, Drs. John Ohtani, Allison Shigezawa, and Nathan Fujita joined QUMG, further enhancing our academic clinical learning environment.

Philanthropy is a hallmark of a strong academic institution and a testament of its value, creating greater good in perpetuity. We currently have three endowed chairs, five endowed professors, and several endowed programs. Our 2022 Internal Giving Campaign was also exceptional, including substantial contributions from our community-based clinical faculty. This year, Dr. Thomas Kosasa created an additional endowment: the 'Aukai Fund for Health Equity.

As we navigate these ever-changing times in healthcare and the academic clinical learning environment, collaboration combined with a deeply rooted 'Ohana spirit is the key to moving forward with our mission. I want to thank each and every one of our clinicians, researchers, educators, staff, and community partners, for their relentless commitment to advancing women's healthcare in Hawai'i. Our learners and patients are our inspiration to strive to the highest, or in the words of Hawai'ian Queen Kapi'olani: "**E kūlia i ka nu'u**" (translation: Strive to Reach the Summit)!



A handwritten signature in green ink, appearing to read 'Ivica Zalud'. The signature is fluid and cursive.

Ivica Zalud, MD, PhD, FACOG, FAIUM  
Professor and Chair  
Kosasa Endowed Chair  
Department of Obstetrics, Gynecology, & Women's Health  
University of Hawai'i, John A. Burns School of Medicine

# POINTS OF PRIDE

## 1. Lifelong learning

- The best medical students matching in our OB/GYN residency program and nationally; OB/GYN clerkship continuously ranks the highest among all clinical departments at JABSOM
- Nationally recognized OB/GYN residency program with long tradition since 1948 -among the best 5% programs in the country
- Two fellowships nationally recognized: Maternal Fetal Medicine and Complex Family Planning

## 2. Discovery

- Last academic year: 39 peer reviewed publications
- Current extramural funds: 12 grants (+2 collaborative): \$1.5M
- 2020 Roy Pitkin Award – among 4 best research papers in the USA

## 3. Healing

- Service to underserved: Wai'anae, Kalihi-Palama, Wahiawa, Kapolei, Waikiki, Waimanalo, Lana'i, and Hilo
- Service to neighbor islands: Kaua'i, Maui, Lana'i, Moloka'i, and Hawai'i
- Patient safety/quality/experience initiatives with our major community partners: Hawai'i Pacific Health and Queen's Health System
- The state's only clinical practice with whole spectrum of integrated clinical care in women's health (general OB/GYN, maternal-fetal medicine, gynecologic oncology, urogynecology, reproductive endocrinology and infertility, complex family planning, addiction medicine, and imaging)
- First permanent JABSOM faculty practice on neighbor islands (Hilo)

## 4. Academic development

- 32 faculty promoted since 2012
- ABOG: 7 examiners from our department
- ACGME OBGYN Review Committee: departmental faculty confirmed
- Leadership in major OB/GYN national and international organizations

## 5. Value to the community/ Philanthropy

- Over \$12.5 million since 2014
- 3 endowed chairs (> \$2 million)
- 5 endowed professors (\$0.5-\$2 million)
- Many endowed programs/awards



# CORE FACULTY LISTING

University of Hawai'i, John A. Burns  
School of Medicine Department of  
Obstetrics, Gynecology, and Women's  
Health Academic Year 2023

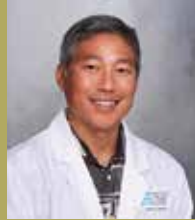
## Department Senior Leadership



**Chair**  
Ivica Zalud, MD, PhD  
Professor and Chair  
Kosasa Endowed Chair



**Associate Chair QUMG  
OB/GYN**  
Bliss Kaneshiro, MD, MPH  
Professor  
Colin McCorrison  
Endowed Professor  
Complex Family Planning  
Fellowship Program Co-Director



**Associate Chair of  
Academic Affairs**  
Mark Hiraoka, MD, MS  
Professor  
Lakshmi Devi & Devraj  
Sharma Endowed Chair  
Residency Program  
Director



**Associate Chair of  
Research & Innovation**  
Men-Jean Lee, MD  
Professor  
Kosasa Endowed  
Professor  
Maternal-Fetal Medicine  
Fellowship Program  
Director

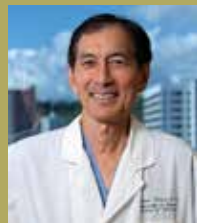


**Associate Chair for Native  
Hawaiian Health & DEI**  
Reni Soon, MD, MPH  
Professor  
Complex Family Planning  
Fellowship Program Co-  
Director



**Associate Chair of  
Community Partnerships**  
Ann Chang, MD, MPH  
Professor  
Residency Program  
Associate Director

## Emeritus Faculty



Thomas Kosasa, MD  
Professor Emeritus



Roy Nakayama, MD  
Professor Emeritus



Santosh Sharma, MD  
Professor Emeritus

## General Obstetrics & Gynecology Division



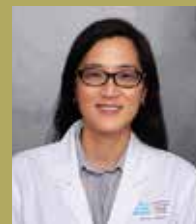
Celeste Adrian, MD  
Assistant Professor



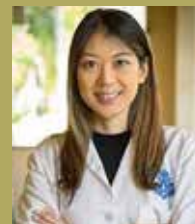
Tod Aeby, MD  
Clinical Professor



Benakar Batista, MD  
Assistant Clinical  
Professor



Ann Chang, MD, MPH  
Associate Chair of  
Community Partnerships  
Professor,  
Residency Program  
Associate Director



Ingrid Chern, MD  
Clinical Instructor



Robert Collins, MD  
Assistant Clinical  
Professor



James DiMarchi, MD  
Assistant Clinical  
Professor



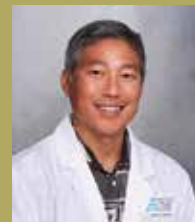
Leticia Diniega, MD  
Clinical Educator



Nathan Fujita, MD  
Assistant Clinical  
Professor



Cori-Ann Hirai, MD  
Assistant Professor



Mark Hiraoka, MD  
Professor & Associate  
Chair of Academic Affairs  
Lakshmi Devi & Devraj  
Sharma Endowed Chair  
Residency Program  
Director



Richard Ikehara, MD  
Assistant Clinical  
Professor





Jessica Johns, MD  
Assistant Clinical  
Professor



Kasey Kajiwara, MD  
Assistant Professor



Kareem Khozaim, MD  
Assistant Professor



Gary Kimoto, MD  
Assistant Clinical  
Professor



Alyssa Malley, MD  
Clinical Instructor



Richard McCartin, MD  
Assistant Professor



Tamarin McCartin, DO,  
MBA  
Assistant Clinical  
Professor



Ricardo Molero Bravo, MD  
Assistant Professor



Kimberly Nagamine, MD  
Assistant Professor



Robert Ohtani, MD  
Associate Clinical  
Professor



Holly Olson, MD  
Associate Professor  
Deputy DIO



Abigail Otto, MD  
Clinical Instructor



Michele Pangilinan, MD  
Assistant Professor



Jackyline Prestosa, MD  
Clinical Instructor



Lynne Saito-Tom, MD, MS  
Assistant Professor  
Medical Student  
Education Director &  
Residency Associate  
Program Director



Michael Savala, MD  
Assistant Professor  
Medical Student  
Education Associate  
Director



Ryan Shields, MD  
Assistant Clinical  
Professor

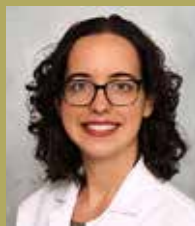


Allison Shigezawa, MD  
Assistant Clinical  
Professor

## **Complex Family Planning Division**



Emilie Stickley, MD  
Assistant Professor



Paris Stowers, MD,  
MSCTR  
Assistant Professor



Tracee Suetsugu, MD  
Assistant Professor



Mark Villarin, MD  
Assistant Professor



Bliss Kaneshiro, MD, MPH  
Professor & Associate  
Chair of QUMG OB/GYN  
Colin McCorriston  
Endowed Professor  
Complex Family Planning  
Fellowship Program Co-  
Director



Melissa Natavio, MD,  
MPH  
Associate Professor

## Gynecologic Oncology



Shandhini Raidoo, MD,  
MPH  
Assistant Professor



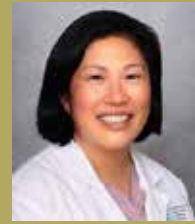
Reni Soon, MD, MPH  
Professor and Associate  
Chair for Native Hawaiian  
Health & DEI  
Complex Family Planning  
Fellowship Program Co-Director



Michael Carney, MD  
Professor  
Kosasa Endowed  
Professor



Robert Kim, MD  
Assistant Professor



Paula Lee, MD  
Professor



Keith Terada, MD  
Professor  
Kosasa Endowed  
Professor

## Maternal-Fetal Medicine Division



Lisa Bartholomew, MD  
Associate Professor



Men-Jean Lee, MD  
Professor & Associate  
Chair of Research &  
Innovation  
Kosasa Endowed  
Professor  
Maternal-Fetal Medicine  
Fellowship Program  
Director



Melanie Maykin, MD  
Assistant Clinical  
Professor



Corrie Miller, DO  
Assistant Professor



Kevin Saiki, MD  
Clinical Instructor



Dena Towner, MD  
Professor & Associate  
Chair of Clinical Affairs

## Reproductive Endocrinology & Infertility Division



Stacy Tsai, MD, MPH  
Associate Professor  
Maternal-Fetal Medicine  
Fellowship Associate  
Program Director



Joy Vink, MD  
Associate Professor



Kelly Yamasato, MD  
Assistant Professor  
Maternal-Fetal Medicine  
Fellowship Associate  
Program Director



Ivica Zalud, MD, PhD  
Professor & Chair  
Kosasa Endowed Chair



Thomas Huang, PhD  
Associate Professor



Bruce Kessel, MD  
Professor

## Research Division



Marjorie Mau, MD  
Clinical Professor



W. Steven Ward, PhD  
Professor  
Lakshmi Devi & Devraj  
Sharma Endowed Chair



Steven Minaglia, MD,  
MBA  
Associate Professor



Ian Oyama, MD, MBA  
Associate Professor



Miriam Seitz, MD  
Assistant Professor



Jennifer Wong, MD  
Assistant Clinical  
Professor

## Urogynecology Division

# DEPARTMENT SERVICE

Our faculty commit themselves to service academically, locally, nationally, and beyond. Examples of service to our institution include Dr. Richard McCartin who was elected as President of John A. Burns Medical School (JABSOM) Faculty Senate, Dr. Ann Chang who serves as the Chair of the Dean's Advisory Committee for Promotion, and Dr. Holly Olson who serves as Associate Designated Institutional Official (DIO).

Locally, our faculty participate in various associations across the State. Several of our faculty act as mentors for the Philippine Medical Association of Hawai'i (PMAH), with Dr. Melissa Natavio serving as Lead Mentor and also on the Board of Governors of PMAH. Dr. Shandhini Raidoo is a member of the Hawai'i Department of Health Sexual and Gender Minority Workgroup, and she provides Sexual Health Education in high schools across the island of O'ahu.

Nationally and internationally, our faculty are experts in their field(s) and they offer that expertise as invited lecturers, visiting

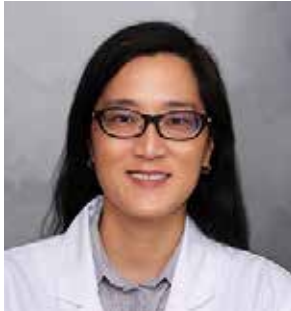
professorship, and respected journal contributors and editors. Dr. Steven Minaglia serves as Associate Editor of Urogynecology, and Dr. Ivica Zalud serves as Associate Editor and Reviews Editor of Journal of Perinatal Medicine. Dr. Men-Jean Lee was confirmed by the American Medical Association (HMA) to serve on the Accreditation Council for Graduate Medical Education (ACGME) OB/GYN Review Committee. Drs. Saito-Tom and Rick McCartin were elected as American Board of Obstetrics & Gynecology (ABOG) oral examiners, joining Drs. Kaneshiro, Hiraoka, Tamarin McCartin, Chang, and Olson in this exclusive club. Dr. Paula Lee was formally recognized by the International Gynecologic Cancer Society/Gynecologic Oncology Global Curriculum forum for her mentorship of a GynOnc fellow from Uganda.

The accomplishments and contributions of our entire faculty are too numerous to fully list, but these are just a few notable examples of how impactful our faculty are. They are a credit to our field and to our department.



# DEPARTMENT PROMOTIONS & RETIREMENTS

Since last year's report, three of our faculty have promoted. Dr. Ann Chang and Dr. Reni Soon both promoted to full Professor, and Dr. Stacy Tsai promoted to Associate Professor. Congratulations!



*Dr. Ann Chang*



*Dr. Reni Soon*



*Dr. Stacy Tsai*



*Dr. Towner*

Our department bids “a hui hou” to Dr. Dena Towner, as she retires after 11 years of service to our department. Best of luck, Dr. Towner!



*Ginny Kamikawa*

We sadly said another “a hui hou” to our beloved Residency Program Administrator, Ginny Kamikawa, upon her retirement after more than 3 decades of service to our department. Aloha, Ginny!

# CLINICAL FACULTY & COMMUNITY PARTNERSHIPS

Our department has been blessed with more than 120 volunteer community-based clinical faculty. They bring a wealth of clinical experience to teach our medical students and residents across Oahu, as well as Kaua'i, Maui, and the Big Island. They also serve on departmental educational committees. Many of our clinical faculty support the academic clinical learning environment by enrolling patients in clinical trials and supporting research endowees in other ways. In addition, several clinical faculty contributed significantly to departmental philanthropy, like Drs. Angela Pratt, Simon Chang, Kenneth Perske, Lynnette Tsai, Thomas Shieh, and others. Hawai'i Society of OB/GYN, led by Drs. John Uohara, James DiMarchi, Lori Kamemoto, and William Fong, supported our resident outreach to Hilo and organized events to encourage our residents to consider neighbor island clinical opportunities after residency. Our clinical faculty serve on medical staff as departmental chairs at Kapi'olani Medical Center for Women and Children (Dr. Angela Pratt) and Queen's Medical Center (Dr. Franklin Dao). Dr. Colleen Inouye is working diligently with our medical school to bring our learners to Maui. This year's "Healthcare Hero" award (based on patient nominations and selected by the Healthcare Association of Hawai'i) went to Dr. Angela Pratt. She also serves as the Hawai'i Medical Association President and Hawai'i delegate to the American Medical Association. Drs. Steven Nishi and Diana Huang celebrated their respective child's admission to John A. Burns School of Medicine at the most recent White Coat Ceremony. Our department is proud of our clinical volunteer faculty and grateful to their contributions to our departmental success.

Our clinical service agreements with Federally Qualified Health Centers (Waianae, Kalihi Palama, Wahiawa, Waimanalo, Waikiki, Lana'i, and Hawai'i Island) have enabled a long tradition of respected partnership to benefit patients and learners. Our patients are served across Hawai'i Pacific Health, Queen's Health Systems, Hilo Medical Center, and Kaiser Foundation clinical facilities. This year we added services to Kaua'i Veteran Memorial Hospital on Kaua'i. The Pacific In Vitro Fertilization Institute, led by Dr. Thomas Kosasa, is also a longstanding supporter of our departmental educational enterprise via our medical school. An ever-expanding list of our invaluable clinical follows on the next page:

Stacy Ammerman, DO  
Laurie Asato, MD  
Colleen Inouye, MD  
Eesha Bhattacharyya, MD  
Simon Chang, MD  
Rylan Chong, PhD  
Benjamin DeLisa, MD  
Sharareh Firouzbakht, MD  
John Frattarelli, MD  
Jan Fujita, MD  
Jacob Garcia, MD  
William Goh, MD  
Evan Harrison, MD  
Denise Hew, MD  
Leslie Hurt, MD  
Lori Kamemoto, MD  
Diana Kumar, MD  
Erika Kwock, MD  
Melissa Lawrence, MD  
Monique Leung, MD  
Sally Markee, MD  
John Morikawa, MD  
Martin Newman, MD  
Saki Onda, MD  
Kanoë Perry, MD  
Kristin Redenbaugh, DO  
Sherri Ruerup, NP  
George Shimomura, MD  
Alexandra Sueda, MD  
Aya Sultan, MD  
Ronnie Texeira, MD  
Lynette Tsai, MD  
Charlene Ushijima, MD  
Claire Wright, PhD  
Aileen Yee, MD

Clyner Antalan, MD  
Jolene Bachman, MD  
Jennifer Bear, MD  
Bryann Bromley, MD  
Hong-Ru Chen, MD  
Benton Chun, MD  
Leayn Dillon, DO  
William Fong, MD  
Gladys Frias-Andaya, MD  
Jon Fujita, MD  
Erin Gertz, MD  
Sara Harris, MD  
Karin Hayashida, MD  
Randall Hirata, MD  
Sarah Hutchinson, MD  
Roxanne Kawelo, MD  
Nikki Kumura, MD  
Caroline Lau, MD  
John Lee, MD  
Salena Loreda, MD  
Peter McNally, MD  
Ken Nakasone, MD  
Steven Nishi, MD  
Grace Ouchi Wong, MD  
Angela Pratt, MD  
Mark Rhee, MD  
Thomas Shieh, MD  
Karen Soules, MD  
Shera Sugibayashi, MD  
Stephen Sung, MD  
Karen Thompson, MD  
Mary Tschann, PhD  
Teresa Walsh, MD  
Akiko Yazawa, MD  
Harry Yoshino, MD

Christina Arnett, MD  
Arlene Baldillo, DO  
Sloane Berger-Chen, MD  
Raydeen Busse, MD  
Tracy Chen, MD  
Franklin Dao, MD  
Julie Enomoto, DPT  
Kacie Fox, MD  
Chrystie Fujimoto, MD  
Carol Fujiyoshi, MD  
Kristen Goerg, MD  
Reina Harris, MD  
Eric Helms, MD  
Christopher Huang, MD  
Jaime Johnson, MD  
Jeffrey Killeen, MD  
Aries Kuo, MD  
Melanie Lau, MD  
Cheryl Leialoha, MD  
Amanda Luning, MSCP  
Elizabeth Mercer, MD  
David Nd, MD  
Richard Oh, MD  
Suha Patel, MD  
Catherine Rault, MD  
Cheryl Lynn Rudy, MD  
Gregg Shimomura, MD  
Thanasak Sueblinvong, MD  
Cathlyn Sullivan, DO  
Christy Takemoto, MD  
Christopher Tokin, MD  
John Uohara, MD  
Angel Willey, MD  
Mikiki Yazawa-Bunn, MD  
Kurt Yoshino, MD



# DEPARTMENT DIVISIONS

## Generalist Obstetrics & Gynecology



The Generalist division is committed to ensuring that all individuals of all ages and of all socioeconomic, ethnic, and racial backgrounds can receive exceptional obstetric and gynecologic care. We work at many labor and delivery units, emergency departments, other hospital units, as well as outpatient sites on Oahu and Big Island, including Kapiolani Medical Center for Women and Children, Hilo Medical Center, North Hawaii Community Hospital, Pali Momi Medical Center, Queen's Medical Center, multiple faculty practices, hospital clinics, and a majority of the Federally Qualified Health Centers (FQHCs) in the state. Initiated by the COVID-19 pandemic, our telehealth programs have expanded, and we now have thriving telehealth programs throughout the state, including Lana'i and Moloka'i.

In addition to general OB/GYN care, our faculty are specialized in areas including PAG (pediatric and adolescent gynecology), MIS (minimally invasive surgery), gynecologic ultrasound, addiction medicine and trauma-informed care. This past year we have expanded our clinical services and educational opportunities in all of these areas.

Dedicated to educating health care teams and future physicians, we are core educators for our medical students, residents, and hospital and clinic staff. We continue to develop new curriculum for our learners, including new resident curriculum on quality and patient safety, diversity, equity and inclusion, and trauma-informed care. We have expanded simulation for all our learners and for hospital staff. We also provide education in our areas of expertise to other physicians and providers within OB/GYN, pediatrics, and family medicine. Outside of Hawaii, we provide education in Guam, the Federated States of Micronesia, and other international sites. Our research and service activities focus on addressing health disparities and improving hospital safety. We have presented our work at multiple national and local meetings. Future expansion projects include our Waipahu High School project, in which we are currently working with the Department of Education to develop a clinical site focused on the mentorship and training of high school students. We aim to continue inspiring future generations to join us in academia and health care.



## Complex Family Planning



The sub-specialist physicians of the Complex Family Planning (CFP) division provide medication and aspiration abortion services, miscarriage management and contraceptive consultations to individuals throughout Hawai'i and the Pacific. We strive to provide patient-centered care, driven by the sentiment that all individuals should be able to make reproductive decisions that are consistent with their values. We provide comprehensive contraceptive services to patients with complex medical issues and we specialize in innovative contraceptive technologies. We are committed to training the next generation of physicians and clinician researchers. Our division established the Ryan Residency Training Program in 2006 specifically to train obstetrics/gynecology residents, and in 2012, we started the Complex

Family Planning Fellowship, a subspecialty program for individuals who have completed obstetrics/gynecology residency training. In 2021, our fellowship program became an Accreditation Council for Graduate Medical Education (ACGME) accredited fellowship site. Our graduated fellows are considered experts in their field, both in Hawai'i and throughout the world. As leaders in Complex Family Planning research, the Family Planning Research Center of Hawaii brings in cutting-edge research to benefit Hawai'i and train the next generation of clinical researchers.

The CFP division had 17 peer-reviewed publications in AY 2022-2023 from our faculty and fellows, including one national clinical guideline (SFP Extended use of long-acting



reversible contraception). A division research project, led by one of our recently graduated fellows, won the 1st place poster at the Society of Family Planning Annual Meeting. Our faculty and fellows gave multiple peer-reviewed presentations at regional and national conferences and invited lectures for national and regional professional medical associations. Additionally, our fellows provided academic lectures or presentations for the medical school community and other academic departments.

The CFP division has also been very involved in community and physician advocacy with several members of our division serving as leaders within the American College of Obstetricians and Gynecologists at the local and district level. We have fostered relationships with community advocates and lawmakers over the years, and early in 2023 successfully worked to pass proactive legislation to protect access to abortion across the state. CFP division faculty mentored fellows and residents to meet with state legislators and testify at the state legislature. For her work on this legislation with community advocates, Dr. Reni Soon was recognized by the Hawaii Women's Lawyers with their 2023 Distinguished Service Award.



## Gynecologic Oncology

Gynecologic Oncology is a unique specialty, as it is the only discipline in cancer medicine that is trained both in the surgical and medical treatment for the gynecologic cancer patient. This dual skill set allows our physicians to consider multiple options for treatment and arrive at the best therapy option(s) for each individual cancer patient. Gynecologic oncology certification is achieved with an additional 3-4 years of intense oncology training after completion of 4 years of general OB/GYN training. The doubly board-certified physicians of the Division of Gynecologic Oncology care for women diagnosed with potentially malignant, pre-malignant, and malignant gynecologic

conditions. We are experts in the area of complicated pelvic and abdominal surgery for malignant conditions and are often called upon to perform surgery on non-cancerous conditions that could be difficult or complicated, such as large benign gynecologic masses, endometriosis, and history of multiple previous surgeries. In addition to open surgeries, we are experts in Minimally Invasive Surgery (MIS), such as laparoscopy or robotic surgery. In fact, almost half of our surgeries are minimally invasive, allowing patients to have decreased pain, shorter hospital visits, fewer side effects, and less time recuperating, so they can get back to normal life and work more quickly.



As nationally and internationally involved academic physicians, we are always trying to bring the most advanced treatment options to the patients of Hawai'i. Importantly, we work with the National Cancer Institute to bring the most cutting edge medicines to Hawai'i so that patients have the option to enroll in clinical trials and hopefully benefit from these newest therapies. Involvement in clinical research is often the only way to have access to newer generations of potentially curative medicines. We are constantly working on research for our patients. Along with our amazing team of nurses, social workers, patient navigators, financial support experts, complementary therapy teams, pain and palliative care teams, emotional, psychological and spiritual support experts, support groups, and collaborative physicians, our gynecologic oncology team strives to provide the best care for women with ovarian, uterine, cervical, vaginal, vulvar, gestational, and other gynecologic cancers and complex gynecologic conditions.

Our gynecologic oncology division cares for all the women of Hawai'i and the Pacific. Although most of our surgeries are performed at the major centers in Honolulu, we also travel to neighbor islands for patient visits and work with the local team(s) to provide critical and quality care to rural communities.

The division has now reached out to all islands with twice monthly visits to Kaua'i, Maui, and Hilo. We are able to perform some surgeries locally on Kaua'i and in Hilo as well. Additionally, we have reached out to Guam and are now able to hold clinics on that island and will soon be able to perform some surgeries there as well, allowing the best of gynecologic oncology care to come home for patients.

Regarding research, we have opened a number

of clinical trials for our cancer patients, allowing them to be able to be enrolled in studies offering the latest and greatest treatments for gynecologic cancers. Our division was the first ever to enroll a patient into a Phase I clinical trial for a brand new oncologic agent here in Hawai'i. The trial "1303" is testing a new concept in cancer treatment, where an antibody recognizing a target on the cancer cell is linked to a tumoricidal "bomb" that will be internalized into the cancer cell due to the antibody-antigen link, thus specifically killing the cancer cell while leaving normal cells intact. We now have 3 patients in Hawaii receiving this groundbreaking treatment, officially referred to as Antibody Drug Conjugate (ADC) therapy.

## Urogynecology

The physicians of the Urogynecology and Pelvic Reconstructive Surgery division treat women with a full spectrum of conditions related to the bladder and reproductive organs, such as urinary and fecal incontinence, pelvic organ prolapse, voiding and defecatory dysfunction, pelvic organ fistulas, and complex benign pelvic surgery. Our physicians are Board Certified in Obstetrics and Gynecology as well as Female Pelvic Medicine and Reconstructive Surgery. Our primary sites of service include Kapi'olani Medical Center for Women and Children, Pali Momi Medical Center, and The Queen's Medical Center. We also provide services at several surgicenters across the state, treating patients and performing surgeries on the islands of Hawai'i and Maui.



The COVID-19 pandemic of recent years hastened telemedicine to the forefront of health care, but we have found it to be a very helpful tool in further capacities. We continue to use it regularly for our neighbor island patients, as well as others who have difficulties traveling to one of our clinical sites. Over the next year, we hope to expand our telehealth services to the island of Kaua'i, which will allow 99% of our state's population to access urogynecologic care without the need for burdensome travel.



## Maternal-Fetal Medicine



The division of Maternal-Fetal Medicine is led by Dr. Kelly Yamasato, Division Chief and Medical Director of the Family Birth Center (FBC) at Kapi'olani Medical Center for Women and Children. The division currently consists of 8 members at Kapiolani Medical Center and 2 faculty at Queens Medical Center. The division recently celebrated the retirement of Dr. Dena Towner, the recruitment of Dr. Joy Vink to the Hawaii Pacific Health Medical Group, and the graduation of fellow, Dr. Kevin Saiki, who joined the Queen's University Medical Group (QUMG).

The division welcomed Visiting Professor Dr. Donna Johnson, Lawrence L. Hester Endowed Chair of Obstetrics and Gynecology at the Medical University of South Carolina, who gave lectures on the role of Vitamin D in pregnancy, the impact of solid organ transplantation in pregnancy, and OB/GYN healthcare delivery in rural America. The Division also welcomed Visiting Professor Dr. Melissa Simon, Director, Institute for Public Health and Medicine (IPHAM) - Center for Health Equity Transformation, the George H. Gardner Endowed Professor of Clinical Gynecology at Northwestern University, and member of the National Academy of Medicine to serve as the Research Thesis Judge for the MFM and Complex Family Planning Fellows. The MFM division celebrated the reaccreditation of the MFM Fellowship Program and the nomination of Dr. Men-Jean Lee to serve a 6-year term on the Review Committee of the Accreditation Council for Graduate Medical Education (ACGME).



## Reproductive Endocrinology & Infertility

The faculty of the Reproductive Endocrinology and Infertility (REI) division provide care for infertility and endocrinology patients and are engaged in resident education. Residents are exposed to all aspects of REI through didactics and dedicated clinical experiences. They are also welcomed to participate in research projects in the division.

The Pacific In Vitro Fertilization Institute is Hawaii's first IVF clinic. Since opening its doors in 1985, they've quietly built a history of successful pregnancies for people who previously had no hope of bearing children on their own, with an estimated 14,000+ babies born to couples in Hawaii, and around the world. Today, Pacific In Vitro is led by two board certified physicians with decades of experience in IVF, reproductive endocrinology, fertility and OB/GYN, Dr. Thomas Kosasa and Dr. Celia Dominguez. Their team also consists of an on-site embryologist, Thomas Huang, Ph.D. who is a board-certified laboratory director and leads the Certified Embryology Laboratory. In addition to our Pacific IVF Institute faculty, our

REI department also includes Dr. Bruce Kessel, working out of Queen's Medical Center.

From the laboratory perspective, recent research is associated with the use of time-lapse imaging of embryo development to find important markers associated with those embryos that have the highest chances for successful implantation. More specifically, our REI department studies the physiological process of what is termed "blastocyst expansion" and have found that the dynamics of this process correlated very well with the genetic health of the embryo. In collaboration with the University's Engineering Department, we have developed an artificial intelligence platform that can analyze the process quantitatively from time-lapse image files of individual embryos. Results from this basic research have recently been reported this year by another group in Italy. The advantage of this approach is that it is simple, non-invasive, and can be used in conjunction with (or as an alternative to) the invasive biopsy of the embryo to provide genetic information about said embryo.



## Research

The JABSOM Department of OBGYN Research division continues its partnership with the Pacific Basin Telehealth Resource Center (PBTRC) to further their telehealth initiatives to increase access to maternal telehealth across the Hawaiian Islands. The Department was recently awarded a \$2.8 million grant from the Department of Hawaiian Homelands from the National Telecommunications and Information Administration (NTIA), US Department of Commerce to provide telehealth equipment to rural hospitals and clinics across the State, as well as personnel to support remote blood pressure monitoring, remote fetal monitoring, and telegenetics. The program will also include collaborations with the Department of Pediatrics and Department of Surgery at Kapi'olani Medical Center for Women and Children to recruit an outpatient telehealth patient navigator, pediatric scales to monitor infant weight, and provide support for telehealth neonatal resuscitation training. Dr. Men-Jean Lee, Kosasa Endowed Professor and Associate Chair for Research & Innovation also spearheaded the Second Hawai'i State Maternal Telehealth Summit with sponsorship from the Hawaii State Department of Health and funding from the Health Resources and Services Administration (HRSA), which was attended by over 100 participants eager to learn about telehealth efforts in the State and participate in focus groups to guide future telehealth efforts.

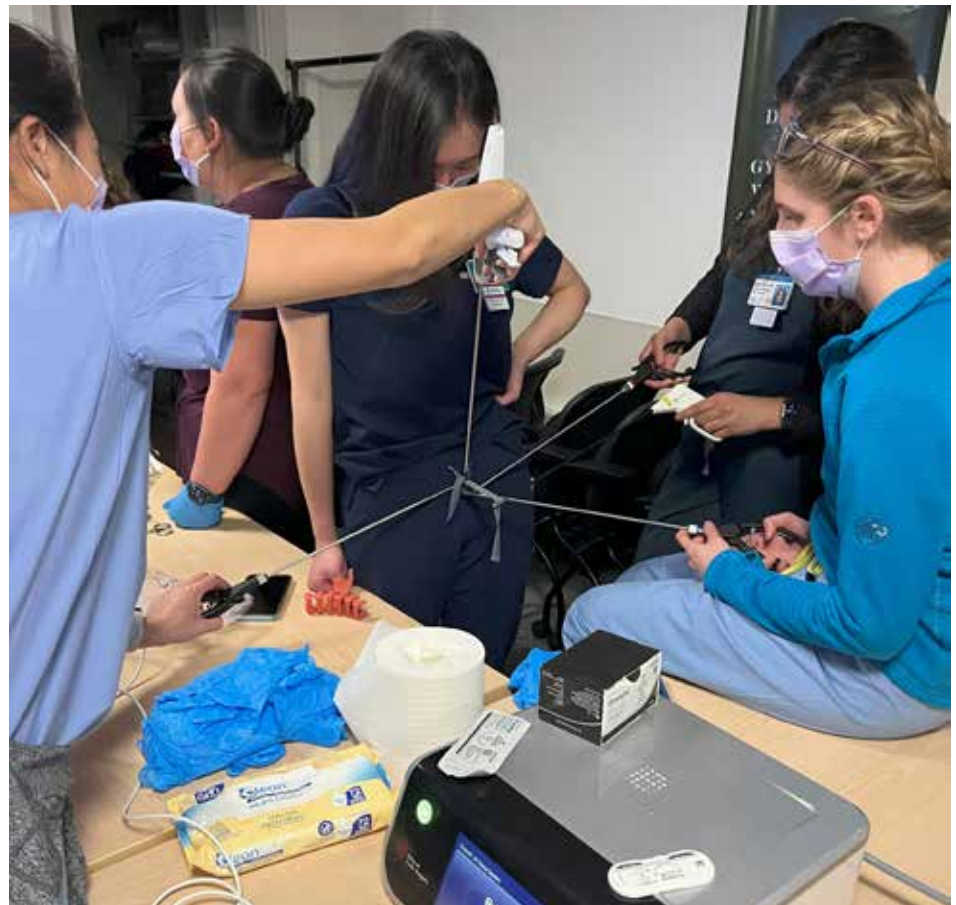
The Department of OBGYN is proud to announce that Dr. Corrie Miller was awarded \$375,000 in funding through the Centers of Biomedical Research Excellence (COBRE) parent grant that is hosted by the University of Hawai'i at Manoa and sponsored by the National Institutes of General Medical Sciences (NIGMS). Dr. Miller will be conducting a 3-year study of the association between the pregnancy microbiome with spontaneous preterm birth. Dr. Men-Jean Lee and Dr. Johann Urschitz continue their research collaborations and were recently awarded a \$200,000 research supplement to the Reproductive Biology COBRE grant at the Institute for Biogenesis Research (IBR), which is headed by Dr. Steve Ward, Division Chief for Research in the Department of OBGYN. Drs. Lee and Urschitz will be investigating the impact of microplastics accumulation in the human placenta. Drs. Michele Pangilinan and Paris Stowers were accepted into Kapiolani Medical Center's new Biomedical Research & Innovation Center (BRIC) physician training program that is led by Drs. Andras Bratincsak from Pediatric Cardiology and Russell Woo from Pediatric Surgery.



Drs. Men-Jean Lee and Corrie Miller led a University of Hawai'i team of Maternal-Fetal Medicine fellows and scientists to attend the Annual Meeting of the Society for Reproductive Investigation in Brisbane, Australia. Oral presentations from the UH Manoa Research Team included studies linking maternal psychological stress with social determinants of health, pregnancy exosomes in the setting of fetal growth restriction, and the role of placental mTOR in fetal growth restricted pregnancies.



# EDUCATION PROGRAMS



## Undergraduate Education

The Department of Obstetrics, Gynecology and Women's Health works with all levels of medical students. During the pre-clerkship years, faculty members serve as Problem Based Learning tutors, present basic science lectures, and serve as research mentors to students. Medical students also shadow faculty members in their outpatient clinics to gain more exposure to being an obstetrician gynecologist.

In June of 2020, JABSOM transformed the third-year clerkship curriculum to a Longitudinal Integrated Curriculum (LIC). This innovative education plan has third year medical students spending half the year in the inpatient setting and the other half in the outpatient setting. During the outpatient rotation, students work with a preceptor for one half day each week and are able to follow their patients throughout the course of their condition and into the hospital for admissions, surgeries or deliveries. Approximately 40 faculty members that work in both rural and urban settings across the state of Hawaii serve as outpatient preceptors.

The inpatient rotation is four weeks long. The students spend 2 weeks at Kapi'olani Medical Center for Women and Children learning about General Obstetrics and Maternal Fetal Medicine on Labor and Delivery. They have the opportunity to evaluate patients in L&D triage, learn about antepartum conditions, participate in cesarean sections, and perform a vaginal delivery. The students participate in a night float rotation to introduce students to night shift work and increase the number of delivery opportunities since babies come at all hours.

The 2-week Gynecologic surgery portion of the rotation takes place at either Kapi'olani Medical Center for Women and Children or Queen's Medical Center. The students evaluate patients needing gynecology consults and participate in a variety of surgeries including subspecialty cases in Gynecologic Oncology and Urogynecology.

The purpose of the department is to give the student a basic foundation in Obstetrics and Gynecology and the problems related to that field. The goals for the 3rd year medical student include, but are not limited to:

1. Perform directed history and physical examinations, including the pelvic exam. Develop and refine oral presentation skills and apply knowledge to clinical decision making.
2. Diagnose and manage typical gynecologic conditions.
3. Diagnose and manage typical obstetric conditions.
4. Understand major psychosocial problems and know the resources available to women.
5. Be familiar with the major information resources for Obstetrics/Gynecology (books, journals, ACOG Practice Bulletins, etc.)

Student didactic sessions during the inpatient rotation include weekly Grand Rounds, Dr. Kosasa's Secret Sessions and Departmental conferences. Faculty also teach sessions during the 3rd year Colloquia sessions. Some faculty topics discussed are:

- Contraception
- Multiple Gestation, Diagnosis and Management
- Pelvic Relaxation, Stress Urinary Incontinence
- Preconception Care
- Preterm Labor

In addition to didactics, students participate in simulation. All students learn to perform a comprehensive breast and pelvic exam on professional patients. During the inpatient orientation, students learn to perform a vaginal delivery on a mannequin and practice two-handed knot tying and suturing. At Queens Medical Center, students participate in the laparoscopic skills laboratory.



Fourth-year medical students are offered various electives to expand their experiences in OB/GYN. Among them are Sub-Internship in Labor & Delivery, Complex Family Planning, High Risk Obstetrics, Gynecology Oncology, and Reproductive Endocrinology & Infertility. During these rotations, students are encouraged to work at the capacity level of an intern.

This year saw big changes in our education administration, as Lisa Kellett moved over to the Residency side to serve as our new Residency Program Administrator after the retirement of Ginny Kamikawa. Krysten Kawamata transitioned into Lisa's previous role as Medical Student Program Administrator.



# Residency Program

## About our Program

The University of Hawai'i John A. Burns School of Medicine Residency Training Program in Obstetrics & Gynecology is fully accredited by the Accreditation Council of Graduate Medical Education and approved for a total of 24 categorical resident positions, six at each level of the four-year program, and a single 1-year preliminary position.

The residency program is based at the Kapi'olani Medical Center for Women & Children, with additional rotations at the Queen's Medical Center, Kaiser Medical Center and Pali Momi Medical Center. During the 3rd and 4th years of training, our residents have a one-month gynecologic rotation on the Island of Hawai'i at the Hilo Medical Center, Bay Clinic, and our faculty practice. As part of this rotation, residents have been able to experience practice on a neighbor island as they participate in gynecologic surgeries.

## Program Highlights

As the nation emerged from the global COVID-19 pandemic and deals with political hot topic issues in the area of reproductive rights, our residency program has returned to normal clinical activities and resumed in-person educational sessions.

Residents and their faculty research mentors continue to be academically productive. This past year, residents presented 14 oral or poster presentations at national meetings. Residents were credited as contributing authors in 3 published articles in peer-reviewed journals. Our 6 third-year residents were able to present their research projects in-person at the Ala Moana Hotel this past year to an appreciative audience, including Visiting Professor Judge James Liu, MD, their fellow residents, and a smaller group of faculty. The residents and faculty benefited from hearing Dr. Scott Graziano, the Krieger Visiting Professor, speak about providing learners with feedback.

The department holiday party was held at Ko'olau Ballroom in January 2023. The event was extra special since we took that opportunity to celebrate the retirement of our longtime program manager, Ginny Kamikawa. Over her 32 years as Program Manager, Ginny has worked with 5 different Program Directors and 5 different Department Chairs. Through it all, she was the glue that held the program together and provided unwavering guidance and support to our residents and faculty.



The department held its annual graduation ceremony at Ko'olau Ballroom, which allowed our program to celebrate the accomplishments of our learners. All 6 chief residents successfully graduated from the program with 2 of the resident graduates choosing to pursue sub-specialty training in the areas of Maternal-Fetal Medicine Fellowship and Minimally Invasive Gynecologic Surgery.

Fortunate to be located in a state where we are able to provide our learners with training in all aspects of obstetrics and gynecology, our program maintains focus on our program mission to provide optimal training to future OB/GYN providers in our local, national and global communities, and always with the spirit of 'Ohana that is reflected throughout our department and our island home.



## PGY1

Romina Jo Banayo, MD – University of East/Ramon Magsaysay Memorial Medical Center  
Eileen Chen, MD – University of Hawai'i  
Jennifer Hayashi, MD – Tulane University  
Miranda Lowe, MD – University of California Davis  
Danielle Mathisen, MD – University of Texas Southwestern  
Sarah Murayama, MD – University of Hawai'i  
Shalin Zhang, MD – Georgetown University

## PGY2

Silvea Bastea, MD – University of California Davis  
Amelia Feinberg-Eddy, MD – Boston University  
Meshelle Hirashima, MD – Boston University  
Shani Ma, MD – University of Hawaii  
Deepraj Pawar, MD – Oregon Health and Science University  
Catherine Tarleton, MD – Columbia University

## PGY3

Radhika Amin, MD – Morehouse School of Medicine  
Brooklyn Cochrane, MD – University of New Mexico  
Selin Kutlu, MD – University of Hawai'i  
L. Lea Lacar, MD – University of Hawai'i  
Avery Olson, MD – University of South Dakota  
Mary Tanner, MD – Louisiana State University

## Chiefs

Asia Ayabe, MD – University of Hawai'i  
Yixin Chen, MD – Penn State College of Medicine  
Kaitlynn Ebisutani, MD - University of Hawai'i  
Olivia Manayan, MD – Queensland University  
Megan Stevenson, MD - University of Hawai'i  
Nancy Yang, MD – University of Minnesota





## Maternal-Fetal Medicine Fellowship

The mission of graduate medical education program in Obstetrics and Gynecology at the University of Hawaii John A. Burns School of Medicine (JABSOM) is to provide a foundation for our Fellows to practice the science and art of Maternal-Fetal Medicine (MFM). Our goal is to train outstanding MFM sub-specialists, who are a credit to themselves and our profession, and to equip these physicians with the skills to pursue lifelong learning, scientific knowledge, and cultural humility when providing care to pregnant patients with diverse backgrounds. The program graduate will be able to serve as an MFM expert and consultant for the management of high-risk pregnancies in their community, advise others in the application of new knowledge, and provide guidance in providing care for complex fetal and maternal conditions, even in a lower-resourced setting. This aligns with our institutional mission to provide outstanding graduate medical education in a collaborative clinical learning environment, resulting in faculty who are proficient to serve in hospitals and clinics, while providing quality patient care, health promotion, and academic excellence, thereby creating healthier communities.

The Fellowship in Maternal-Fetal Medicine at the University of Hawai'i was approved by the American Board of Obstetrics and Gynecology (ABOG) and enrolled the first Fellow in 2009. The Fellowship was then re-accredited by the Accreditation Council for Graduate Medical Education (ACGME) in 2020. The primary purpose in developing this Fellowship was to ensure the State of Hawai'i has adequate healthcare workers who are knowledgeable about the unique healthcare needs of the islands. Our first Fellow has remained in Hawai'i

to practice Maternal-Fetal Medicine, as have 45% of our graduates, thus fulfilling this goal. When selecting our fellows, we aim to select those that reflect the diversity of our population and have a keen interest in seeking a permanent faculty position here in Hawai'i.

The fellows are expected to be involved with obstetrical quality improvement processes with our hospital partners. Projects have included developing and implementing sepsis bundles, management of severe HTN, thrombosis prophylaxis, and C/S surgical site infection prevention to name a few. The MFM Fellows have been active participants in creating a culture of patient safety in our hospitals.

Fellows are encouraged to be advocates for the healthcare of women in Hawai'i through ACOG and programs specific to Hawai'i. Through this advocacy, Hawai'i now has a Maternal Morbidity review board. The MFM Fellows all served as moderators and discussants at our 2nd Hawaii Maternal Telehealth Summit this past summer and had the opportunity to meet with leaders in community-based organizations, the Hawai'i State Department of Health, and state legislators.

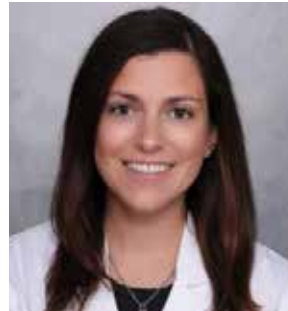
Maternal-Fetal Medicine specialists are respected as healthcare leaders and experts in the community, thus training in the program encourages the fellows to develop these skills to educate current healthcare providers and train learners and other future healthcare providers. We are proud that 78% of our graduates are in academic positions across the nation.

Fellows are expected to have hands on laboratory experience, which they receive in

collaboration with the Institute for Biogenesis Research (<https://www.ibr.hawaii.edu/>), a Center of Biomedical Research Excellence (COBRE) that is focused on mammalian development and reproductive biology. Current projects involve evaluating the role of the COVID-19 vaccination in pregnancy, microplastics in the human placenta, and the intrauterine environment in fetal development.



**Jacob Garcia, MD**  
First-Year Fellow



**Cathlyn Sullivan, MD**  
Second-Year Fellow

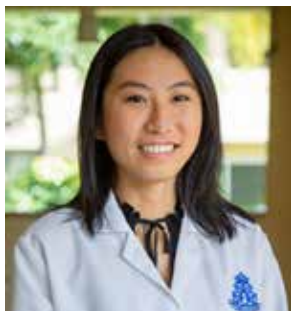


**Kevin Saiki, MD**  
Third-Year Fellow

This year, our 2022 fellowship graduate, Dr. Melanie Maykin, joined our academic department as an Assistant Clinical Professor and provider at Kapi'olani Women's and Children's Hospital. Dr. Kevin Saiki, our graduating fellow, will be soon joining our faculty on the QUMG side.

## Complex Family Planning Fellowship

The University of Hawai'i Fellowship in Complex Family Planning (CFP) was established in 2012. During this two-year post-residency training, fellows gain clinical skills to become experts in complex contraception and abortion, complete courses in research methodology, develop and complete a research project, serve in a domestic or international health care system where abortion access is limited, and gain skills to actively engage in physician advocacy on local and national policy levels. Graduates of the fellowship are experts in complex family planning clinical care, family planning clinical and translational research, family planning public health and public policy, and family planning education. In 2020, Complex Family Planning was officially recognized by the Accreditation Council for Graduate Medical Education (ACGME) and the American Board of Obstetrics and Gynecology (ABOG) as a sub-specialty, and the UH CFP program was awarded ACGME accreditation in 2021.



**Tracy Chen, MD**  
First-Year Fellow



**Divya Dethier, MD**  
Second-Year Fellow

Our two CFP fellows this year, Dr. Divya Dethier and Dr. Tracy Chen, worked on multiple research projects and had impactful publications this year. With the ongoing effects of the overturning of *Roe v. Wade* in 2022, our fellows were very active this year in advocacy, both in media and at the state legislature on behalf of our patients and our community. Our graduating fellow, Dr. Divya Dethier, was hired into the Complex Family Planning Division at Kaiser Permanente in San Francisco, California.

## RESEARCH DAY 2023

Dedicated to Dr. Bruce Kessel, who has dedicated his professional career to advancing women's health care and resident education in Hawai'i. Dr. Kessel joined the OB/GYN department in 1998 and has been based at Queen's Medical Center ever since. In his role as a board-certified OB/GYN, he has provided exceptional consultations to patients in his Reproductive Endocrinology and Infertility practice and has also served as an attending physician in the Queen Emma Clinic's Women's Health Clinic. His commitment to providing high-quality patient care has been underscored by his firm belief that adequate time spent with patients leads to superior consultations.

Dr. Kessel has been widely recognized for his outstanding teaching abilities, receiving a total of 8 teaching awards, including 6 from the UH Department of OB/GYN and UH OB/GYN Chief Residents. His passion for teaching and learning from residents during his tenure in the department has made a significant impact on the quality of medical education in Hawai'i. Dr. Kessel's academic career has also been successful, with 67 abstracts presented and 40 peer-reviewed publications, including in the American Journal of Obstetrics and Gynecology, Obstetrics and Gynecology, and JAMA. Despite his many accolades, Dr. Kessel remains extraordinarily humble and truly cares for the people around him. It is with deep gratitude and admiration that the 28th Annual Research Day Symposium honors Dr. Bruce Kessel for his contributions to the advancement of women's health care and resident education in Hawai'i.





### **Maternal-Fetal Medicine Fellow Abstract Presentation**

**Kevin Saiki, MD**

*"Social Determinants of Health, Perceived Stress, and Interleukin-6 Levels in the First Trimester: A Single Center Prospective Study of 373 Patients in Hawaii"*

### **Family Planning Fellow Abstract Presentation**

**Divya Dethier, MD**

*"Self-Performed Blood Typing: A Promising Adjunct for No-test and Self-Managed Abortion"*

### **Resident Presentations**

**Yixin Chen, MD**

*"The Effect of Food Environment on the Progression of GDMA1 to GDMA2"*

**Olivia Manayan, MD**

*"Exploring the Association Between Maternal Caffeine Consumption During Pregnancy and the Maternal/ Neonatal Gut Microbiome"*

**Megan Stevenson, MD**

*"Exploring Factors That Impact Health and Wellness Among Native Hawaiian and Pacific Islander Young Women in Hawai'i using PhotoVoice"*

**Kaitlynn Ebisutani, MD**

*"Immunohistochemical Expression of p53 and p16 in Endometrial Serous Carcinoma: Frequencies, Clinical Correlates, and the Role of p16 in Diagnostically Challenging Cases"*

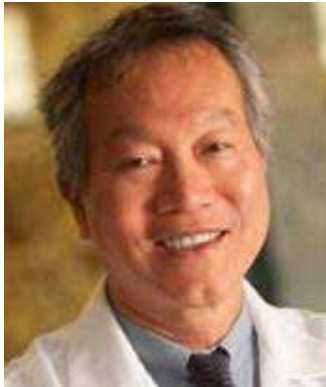
**Asia Ayabe, MD**

*"Adherence to 2019 ASCCP Cervical Cancer Screening Guidelines"*

**Nancy Yang, MD**

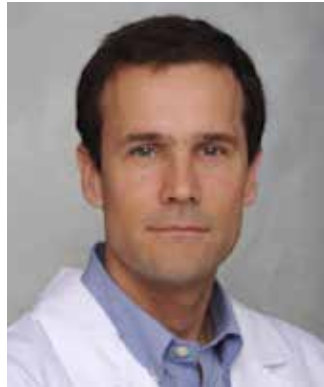
*"Impact of Telehealth on Visit Attendance for Women with Opioid Use Disorder"*

# 2023 Judging Panel



**James H. Liu, MD**  
Chair & Professor Emeritus  
Department of Reproductive  
Biology

Case Western Reserve  
University School of  
Medicine



**Andras Bratincsak, MD, PhD**  
Associate Professor  
Department of Pediatrics

John A. Burns School of  
Medicine, University of  
Hawai'i at Manoa



**Lisa Vallin, PhD, MA**  
Lecturer, Department of  
Women, Gender, & Sexuality  
Studies

University of Hawai'i Manoa

## **Presentation Awards**

*Most Outstanding Resident Research Project Award*

**Asia Ayabe, MD**

*Audience Award*

**Megan Stevenson, MD**

*Santosh Sharma Resident Research Award*

**Elizabeth Mercer, MD**

# DEPARTMENT AWARDS

## **FACULTY AWARDS**

*The Council on Resident Education in Obstetrics and Gynecology (CREOG) National Faculty Award*  
**Paris Stowers, MD**

*The Society for Academic Specialists in General Obstetrics and Gynecology (SASGOG) Faculty Award*  
**Ann Chang, MD**

*Colin C. McCorrison, MD Master Teacher Award*  
**Jan Fujita, MD**

*UH Excellence Teaching Award*  
**Robert Collins, MD**

*The Association of Professors of Gynecology and Obstetrics (APGO) Excellence in Teaching Award*  
**Mark Villarin, MD**

*Fellow Excellence in Teaching Award*  
**Kevin Saiki, MD**

## **OUTSTANDING RESIDENT FOR EXCELLENCE IN MEDICAL STUDENT TEACHING AWARDS**

**1st Year: Amelia Feinberg-Eddy, MD**

**2nd Year: Brooklyn Cochrane, MD**

**3rd Year: Nancy Yang, MD**

**4th Year: Kelsi Chan, MD**

**Overall: Shani Ma, MD**

*The Society of OB/GYN Hospitalists (SOGH)*  
**Megan Stevenson, MD**

*The American Urogynecologic Society: Resident Award for Excellence in Female Pelvic Medicine/Reconstructive Surgery*  
**Kaitlynn Ebisutani, MD**

*Society for Maternal-Fetal Medicine SMFM Resident Award for Excellence in Obstetrics*

**Megan Stevenson, MD**

*The Society of Gynecologic Oncology: Outstanding Resident in Gynecologic Oncology*

**Lucia Xiong, MD**

*The Society of Laparoendoscopic Surgeons (SLS): Outstanding MIS Resident Award*

**Michelle Ichikawa, MD**

*The American Association of Gynecologic Laparoscopists (AAGL): Special Resident in Minimally Invasive Gynecology Award*

**Kaitlynn Ebisutani, MD**

*The Society of Reproductive Endocrinology & Infertility: The Golden Embryo Award*

**Asia Ayabe, MD**

*The Ryan Program Resident Award for Excellence in Family Planning*

**Olivia Manayan, MD**

*The Society of Academic Specialists in General Obstetrics and Gynecology (SASGOG) Rising Star Award*

**Nancy Yang, MD**

*American Society for Colposcopy and Cervical Pathology (ASCCP) Award*

**Nancy Yang, MD**

*The North American Society for Pediatric and Adolescent Gynecology: Best Resident Award*

**Radhika Amin, MD**

*Hawai'i Section of ACOG: Resident Advocacy Award*

**Lucia Xiong, MD**

*1st Year Residents Selected Recipient: Best PGY2 Teaching Resident Award*

**Selin Kutlu, MD**

*The Philip I. McNamee, MD Award in Obstetrics and Gynecology*

**Nancy Yang, MD**

*UH OB/GYN Department Academic Achievement Award*

**Elizabeth Mercer, MD**

*UH OB/GYN Department Award for Excellence*

**Kelsi Chan, MD**

# PHILANTHROPY

Philanthropy is the hallmark of an academic institution. This is a clear investment in our academic clinical learning environment to benefit our programs, faculty, learners, and staff. Since 2014, our department has been fortunate to receive over \$12M in endowments via the University of Hawai'i Foundation. Generous donors created 3 endowed chairs (donations totaling over \$2M), 5 endowed professors (donation ranging from \$0.5-2M) and several endowed programs (donations ranging from \$50-500K). Those endowments will serve our department and medical school for generations to come. This is a clear testament to the contributions made by the department and the value we bring to our community.



This past year, private donations have benefited our department in the following ways:

- Faculty development
- Research endeavors
- Neighbor island outreach
- Disadvantaged communities' clinical services
- Maternal Fetal Medicine and Complex Family Planning fellowship activities
- Resident and medical student academic development
- Clinical and administrative staff professional development
- Visiting professorships



Our more than generous donors share the commitment to life-long learning and support our efforts to advance women's health. We are deeply grateful for the extensive support received over the past year. Starting from the inside out, nearly 100% of our faculty and staff participated again in our JABSOM Internal Giving Campaign in 2022. Emeritus Professor Dr. Thomas Kosasa has yet again renewed his trust in our department through an additional generous gift which will enable us to fulfill our mission in perpetuity. He recently established the 'Aukai Fund for Health Equity to honor our Complex Family Planning programs and Dr. Reni Soon. Furthermore, we received significant contributions from other clinical faculty, Drs. Angela Pratt, Kenneth Perske, Simon Chang, John Uohara, Thomas Shieh, and Lynnette Tsai. International organization Kobe-Honolulu also created an endowment for women's health. We continue receiving funds to support Gynecologic Oncology visiting professorship(s) by Mr. Jeffrey Portnoy, in honor of his late wife Sandy. The Krieger lectureship endowment continues providing funds for visiting experts in medical education. Finally, the Philip McNamee Award and John Ohtani Award honor our best medical students and residents each year.

## Department Faculty Endowments:

Kosasa Endowed Chair – Ivica Zalud, MD

Lakshmi Devi and Devraj Sharma Endowed Chair I – Steven Ward, PhD

Lakshmi Devi and Devraj Sharma Endowed Chair II – Mark Hiraoka, MD

Kosasa Endowed Professor I – Men-Jean Lee, MD

Kosasa Endowed Professor II – Keith Terada, MD

Kosasa Endowed Professor in Gynecologic Oncology – Michael Carney, MD

Endowed Professor in OB/GYN – Dena Towner, MD

Colin McCorriston Endowed Professor – Bliss Kaneshiro

# PUBLICATIONS & ABSTRACTS

## Research Productivity of UH OB/GYN Faculty, Fellows, Residents, and Medical Students Publications July 2022-June 2023

1. Liu JF, Brady MF, Matulonis UA, Miller A, Kohn EC, Swisher EM, Cella D, Tew WP, Cloven NG, Muller CY, Bender DP, Moore RG, Michelin DP, Waggoner SE, Geller MA, Fujiwara K, D'Andre SD, **Carney M**, Alvarez Secord A, Moxley KM, Bookman MA. Olaparib With or Without Cediranib Versus Platinum-Based Chemotherapy in Recurrent Platinum-Sensitive Ovarian Cancer (NRG-GY004): A Randomized, Open-Label, Phase III Trial. *J Clin Oncol*. 2022 Jul 1;40(19):2138-2147. doi: 10.1200/JCO.21.02011. Epub 2022 Mar 15. PMID: 35290101
2. Dye CK, Corley MJ, Ing C, Lum-Jones A, Li D, **Mau MKLM**, Maunakea AK. Shifts in the immunoepigenomic landscape of monocytes in response to a diabetes-specific social support intervention: a pilot study among Native Hawaiian adults with diabetes. *Clinical Epigenetics*. 2022 Jul 18;14(1):91. doi: 10.1186/s13148-022-01307-6. PMID: 35851422
3. Kurata NB, Ghatnekar RJ, **Mercer E**, Chin JM, **Kaneshiro B**, **Yamasato KS**. Transcutaneous Electrical Nerve Stimulation for Post-Cesarean Birth Pain Control: A Randomized Controlled Trial. *Obstet Gynecol*. 2022 Aug 1;140(2):174-180. doi:10.1097/AOG.0000000000004798. Epub 2022 Jul 6. PMID: 35852266
4. Chin JM, Chen E, Wright T, **Bravo RM**, Nakashima E, Kiyokawa M, Karasaki K, Estrada P, Ghatnekar R, **Lee MJ**, **Bartholomew ML**. Urine drug screening on labor and delivery. *Obstet Gynecol MFM*. 2022 Aug 26;4(6):100733. doi: 10.1016/j.ajogmf.2022.100733. PMID: 36038068
5. Ribas-Maynou J, Nguyen H, Valle R, Wu H, Yeste M, **Ward WS**. Am J Sperm degradation after vasectomy follows a sperm chromatin fragmentation-dependent mechanism causing DNA breaks in the toroid linker regions. *Mol Hum Reprod*. 2022 Aug 29;29(9):gaac029. doi: 10.1093/molehr/gaac029. PMID: 35929777
6. Linda Burhansstipanov, Kathryn L. Braun, Jessica Blanchard, Daniel Petereit, **Avery Keller Olson**, Priscilla R. Sanderson, Lorencita Joshweseoma, Chiu-Hiseh (Paul) Hsu, Ken Batai, Lloyd Joshweseoma, Dana Russell, Diana G. Redwood and Mark C. Bauer. Cancer and Survivorship in American Indians and Alaska Natives. In L. BURHANSSTIPANOV & K. L. BRAUN (Eds.), *Indigenous Public Health: Improvement through Community-Engaged Interventions* (pp. 147–173). (2002, September). University Press of Kentucky. <https://doi.org/10.2307/j.ctv2svjzdw.9>
7. Moayed G, Stevens K, Fontanilla T, **Tschann M**, Bednarek PH, Salcedo J, **Kaneshiro B**, **Soon R**. Intranasal fentanyl for first-trimester uterine aspiration pain: A randomized controlled trial. *Contraception*. 2022 Sep;113:101-107. doi: 10.1016/j.contraception.2022.04.008. Epub 2022 Apr 25. PMID: 35472333
8. **Stowers P**, Fontanilla T, Elia J, Salcedo J, **Tschann M**, **Kaneshiro B**, **Soon R**. Fetal tissue donation for research at the time of abortion: A qualitative study of individuals who experienced an abortion in Hawaii in 2018-19. *Contraception*. 2022 Sep;113:84-87. doi: 10.1016/j.contraception.2022.05.005. Epub 2022 May 15. PMID: 35584722
9. **Dethier D**, Qasba N, **Kaneshiro B**. Society of Family Planning clinical recommendation: Extended use of long-acting reversible contraception. *Contraception*. 2022 Sep;113:13-18. doi: 10.1016/j.contraception.2022.06.003. Epub 2022 Jun 15. PMID: 35716806
10. Hubacher D, Schreiber CA, Turok DK, Jensen JT, Creinin MD, Nanda K, White KO, Dayananda I, Teal SB, Chen PL, Chen BA, Goldberg AB, Kerns JL, Dart C, Nelson AL, Thomas MA, Archer DF, Brown JE, Castaño PM, Burke AE, **Kaneshiro B**, Blithe DL. Continuation rates of two different-sized copper intrauterine devices among nulliparous women: Interim 12-month results of a single-blind, randomised, multicentre trial. *EClinicalMedicine*. 2022 Jul 16;51:101554. doi: 10.1016/j.eclim.2022.101554. eCollection 2022 Sep. PMID: 35865736
11. Ribas-Maynou J, Delgado-Bermúdez A, Mateo-Otero Y, Viñolas E, Hidalgo CO, **Ward WS**, Yeste M. Determination of double- and single-stranded DNA breaks in bovine sperm is predictive of their fertilizing capacity. *J Anim Sci Biotechnol*. 2022 Sep 17;13(1):105. doi: 10.1186/s40104-022-00754-8. PMID: 36114517
12. La V, **Raidoo S**, Termulo K, Moayed G. Knowledge and Provision of Care to Transgender People by Obstetrician-Gynecologists in Hawai'i. *G. Hawaii J Health Soc Welf*. 2022 Oct;81(10):272-278. PMID: 36212219
13. Gregory WT, Schimpf M, Barber M, **Minaglia S**, Brubaker L. Call to Readiness: The Urogynecologist's Role in Post-Roe America. *Urogynecology (Phila)*. 2022 Nov 1;28(11):713-715. doi: 10.1097/SPV.0000000000001250. Epub 2022 Sep 24. PMID: 36288109
14. Connolly KK, **Olson HL**, Buenconsejo-Lum LE. Medical School Faculty Development Post-Pandemic - Opportunities in the Digital Shift. *Hawaii J Health Soc Welf*. 2022 Nov;81(11):316-318. PMID: 36381260.
15. Kerestes C, Delafield R, Elia J, Shochet T, **Kaneshiro B**, **Soon R**. Person-centered, high-quality care from a distance: A qualitative study of patient experiences of TelAbortion, a model for direct-to-patient medication abortion by mail in the United States. *Perspect Sex Reprod*

Health. 2022 Dec;54(4):177-187. doi: 10.1363/psrh.12210. Epub 2022 Oct 13. PMID: 36229416

16. Anderson CM, [Tschann M](#), Whitehouse K, [Soon R](#), Fontanilla T, [Kaneshiro B](#). Oxytocin and Hypotension During Dilatation and Evacuation Procedures at 18-24 Weeks Gestation. *Hawaii J Health Soc Welf*. 2022 Dec;81(12):328-332. PMID: 36504503
17. [Mau MKLM](#), Baumhofer Merritt NK, Werner K, Oneha MF. Engaging Community Health Centers to understand their perceptions and interest in longitudinal cohort research on diabetes mellitus in Native Hawaiian communities: Initial insights from the Waimānalo community. *Front Public Health*. 2022 Dec 8;10:1035600. doi: 10.3389/fpubh.2022.1035600. eCollection 2022. PMID: 36568795
18. Chang CS, [Carney ME](#), Killeen JL. Two Cases of Mesonephric-like Carcinoma Arising From Endometriosis: Case Report and Review of the Literature. *Int J Gynecol Pathol*. 2023 Jan 1;42(1):101-107. doi: 10.1097/PGP.0000000000000863. Epub 2022 Feb 22. PMID: 35191427
19. Weir A, Kang EY, Meagher NS, Nelson GS, Ghatage P, Lee CH, Riggan MJ, Gentry-Maharaj A, Ryan A, Singh N, Widschwendter M, Alsop J, Anglesio MS, Beckmann MW, Berger J, Bisinotto C, Boros J, Brand AH, Brenton JD, Brooks-Wilson A, [Carney ME](#), Cunningham JM, Cushing-Haugen KL, Cybulski C, Elishaev E, Erber R, Fereday S, Fischer A, Paz-Ares L, Gayarre J, Gilks BC, Grube M, Harnett PR, Harris HR, Hartmann A, Hein A, Hendley J, Hernandez BY, Heublein S, Huang Y, Huzarski T, Jakubowska A, Jimenez-Linan M, Kennedy CJ, Kommoss FKF, Koziak JM, Kraemer B, Le ND, Lesnock J, Lester J, Lubiński J, Menkiszak J, Ney B, Olawaiye A, Orsulic S, Osorio A, Robles-Díaz L, Ruebner M, Shah M, Sharma R, Shvetsov YB, Steed H, Talhouk A, Taylor SE, Traficante N, Vierkant RA, Wang C, Wilkens LR, Winham SJ, Benitez J, Berchuck A, Bowtell DD, Candido Dos Reis FJ, Cook LS, DeFazio A; AOCs group; Doherty JA, Fasching PA, García MJ, Goode EL, Goodman MT, Gronwald J, Huntsman DG, Karlan BY, Kommoss S, Modugno F, Schildkraut JM, Sinn HP, Staebler A, Kelemen LE, Ford CE, Menon U, Pharoah PDP, Köbel M, Ramus SJ. Br J Increased FOXJ1 protein expression is associated with improved overall survival in high-grade serous ovarian carcinoma: an Ovarian Tumor Tissue Analysis Consortium Study. *Cancer*. 2023 Jan;128(1):137-147. doi: 10.1038/s41416-022-02014-y. Epub 2022 Nov 2. PMID: 36323878
20. Northington GM, [Minaglia S](#). Diversity in Pelvic Floor Disorders Research: A Matter of Equity and Inclusion. *Urogynecology (Phila)*. 2023 Jan 1;29(1):1-4. doi: 10.1097/SPV.0000000000001308. PMID: 36548100
21. Stotz SA, [Soon R](#), Moore KR, Charron-Prochownik D, Fischl A, Spencer K, [Mau MKLM](#). A Qualitative Study on Preventing Gestational Diabetes in Native Hawaiian and Pacific Islander Adolescent Females: Perspectives from an Expert Panel of Health Care Providers. *Hawaii J Health Soc Welf*. 2023 Jan;82(1):10-15. PMID: 36685779
22. Pearlman Shapiro M, [Dethier D](#), Kahili-Heede M, [Kaneshiro B](#). No-Test Medication Abortion: A Systematic Review. *Obstet Gynecol*. 2023 Jan 1;141(1):23-34. doi: 10.1097/AOG.0000000000005016. Epub 2022 Dec 5. PMID: 36701607
23. [Sullivan C](#), [Mercer E](#), [Huang T](#), [Zalud I](#), Thompson K, [Lee MJ](#). A Case of Monochorionic-Diamniotic Twin Pregnancy with Differing Phenotype Sex. *G Women's Health Car*. 2002; 4(1): 1–6. doi: <https://doi.org/10.47485/2766-5879.1019>
24. Michel A, Minton L, [Sullivan C](#), Fontenot H, [Lee MJ](#). Integrating Mobile and Portable Technologies With In-Person and Telehealth Care to Increase Perinatal Healthcare Equity for the Unstably Housed. *J Perinat Neonatal Nurs*. 2023 Jan-Mar 01;37(1):27-35. doi: 10.1097/JPN.0000000000000705. PMID: 36707745
25. Estrada P, Tipton L, Chong R, [Towner D](#), [Yamasato K](#). Associations between the Safe Prevention of Primary Cesarean Delivery Care Consensus and Maternal/Neonatal Outcomes. *Am J Perinatol*. 2023 Jan 17. doi: 10.1055/s-0042-1760387. PMID: 3664973
26. Schwab ME, Lianoglou BR, Gano D, Gonzalez Velez J, Allen IE, Arvon R, Baschat A, Bianchi DW, Bitanga M, Bourguignon A, Brown RN, Chen B, Chien M, Davis-Nelson S, de Laat MWM, Ekwattanakit S, Gollin Y, Hirata G, Jelin A, Jolley J, Meyer P, Miller J, Norton ME, Ogasawara KK, Panchalee T, Schindewolf E, Shaw SW, Stumbaugh T, Thompson AA, [Towner D](#), [Tsai PS](#), Viprakasit V, Volanakis E, Zhang L, Vichinsky E, MacKenzie TC. The impact of in utero transfusions on perinatal outcomes in patients with alpha thalassemia major: the UCSF registry. *Blood Adv*. 2023 Jan 24;7(2):269-279. doi: 10.1182/bloodadvances.2022007823. PMID: 36306387
27. [Sullivan C](#), Cazin M, Higa C, [Zalud I](#), [Lee MJ](#). Maternal telehealth: innovations and Hawai'i perspectives. *J Perinat Med*. 2022 Nov 14;51(1):69-82. doi: 10.1515/jpm-2022-0394. Print 2023 Jan 27. PMID: 36367993
28. Kang EY, Weir A, Meagher NS, Farrington K, Nelson GS, Ghatage P, Lee CH, Riggan MJ, Bolithon A, Popovic G, Leung B, Tang K, Lambie N, Millstein J, Alsop J, Anglesio MS, Ataseven B, Barlow E, Beckmann MW, Berger J, Bisinotto C, Bösmüller H, Boros J, Brand AH, Brooks-Wilson A, Brucker SY, [Carney ME](#), Casablanca Y, Cazorla-Jiménez A, Cohen PA, Conrads TP, Cook LS, Coulson P, Courtney-Brooks M, Cramer DW, Crowe P, Cunningham JM, Cybulski C, Darcy KM, El-Bahrawy MA, Elishaev E, Erber R, Farrell R, Fereday S, Fischer A, García MJ, Gayther SA, Gentry-Maharaj A, Gilks CB; AOCs Group; Grube M, Harnett PR, Harrington SP, Harter P, Hartmann A, Hecht JL, Heikaus S, Hein A, Heitz F, Hendley J, Hernandez BY, Polo SH, Heublein S, Hirasawa A, Høgdall E, Høgdall CK, Horlings HM, Huntsman DG, Huzarski T, Jewell A, Jimenez-Linan M, Jones ME, Kaufmann SH, Kennedy CJ, Khabele D, Kommoss FKF, Kruitwagen RFFPM, Lambrechts D, Le ND, Lener M, Lester J, Leung Y, Linder A, Loverix L, Lubiński J, Madan R, Maxwell GL, Modugno F, Neuhausen SL, Olawaiye A, Olbrecht S, Orsulic S, Palacios J, Pearce CL, Pike MC, Quinn CM, Mohan GR, Rodríguez-Antona C, Ruebner M, Ryan A, Salfinger SG, Sasamoto N, Schildkraut JM, Schoemaker MJ, Shah M, Sharma R, Shvetsov YB, Singh N, Sonke GS, Steele L, Stewart CJR, Sundfeldt K, Swerdlow AJ, Talhouk A, Tan A, Taylor SE, Terry KL, Toloczko A, Traficante N, Van de Vijver KK, van der Aa MA, Van Gorp T, Van Nieuwenhuysen E, van Wageningen L, Vergote I, Vierkant RA, Wang C, Wilkens LR, Winham SJ, Wu AH, Benitez J, Berchuck A, Candido Dos Reis FJ, DeFazio A, Fasching PA, Goode EL, Goodman MT, Gronwald J, Karlan BY, Kommoss S, Menon U, Sinn HP, Staebler A, Brenton JD, Bowtell DD,

- Pharoah PDP, Ramus SJ, Köbel M. CCNE1 and survival of patients with tubo-ovarian high-grade serous carcinoma: An Ovarian Tumor Tissue Analysis consortium study. *Cancer*. 2023 Mar 1;129(5):697-713. doi: 10.1002/cncr.34582. Epub 2022 Dec 26. PMID: 36572991
29. Romero R, Jahnke H, Braun T, Chervenak F, D'Addario V, Ellington M, Genc MR, Greenough A, Grunebaum A, Kurjak A, Skupski DW, [Zalud I](#). A Celebration of Professor Joachim Dudenhausen. *J Perinat Med*. 2023 Feb 28;51(3):285-290. doi: 10.1515/jpm-2023-2001. Print 2023 Mar 28. PMID: 36848396
  30. [Stowers PN](#), [Hiraoka M](#), [Khozaim K](#), [Stickley E](#), [Adrian C](#), [Uohara J](#), [Zalud I](#). Perceived Impact of a Core Rotation on Hawai'i Island on Future Career Intentions among Obstetrics and Gynecology Residents. *Hawaii J Health Soc Welf*. 2023 Apr;82(4):89-93. PMID: 37034057
  31. Koenig LR, Raymond EG, Gold M, Boraas CM, [Kaneshiro B](#), Winikoff B, Coplon L, Upadhyay UD. Mailing abortion pills does not delay care: A cohort study comparing mailed to in-person dispensing of abortion medications in the United States. *Contraception*. 2023 May;121:109962. doi: 10.1016/j.contraception.2023.109962. Epub 2023 Feb 2. PMID: 36736715
  32. Köbel M, Kang EY, Weir A, Rambau PF, Lee CH, Nelson GS, Ghatage P, Meagher NS, Riggan MJ, Alsop J, Anglesio MS, Beckmann MW, Bisinotto C, Boisen M, Boros J, Brand AH, Brooks-Wilson A, [Carney ME](#), Coulson P, Courtney-Brooks M, Cushing-Haugen KL, Cybulski C, Deen S, El-Bahrawy MA, Elishaev E, Erber R, Fereday S; AOCs Group; Fischer A, Gayther SA, Barquin-Garcia A, Gentry-Maharaj A, Gilks CB, Gronwald H, Grube M, Harnett PR, Harris HR, Hartkopf AD, Hartmann A, Hein A, Hendley J, Hernandez BY, Huang Y, Jakubowska A, Jimenez-Linan M, Jones ME, Kennedy CJ, Kluz T, Koziak JM, Lesnock J, Lester J, Lubiński J, Longacre TA, Lycke M, Mateoiu C, McCauley BM, McGuire V, Ney B, Olawaiye A, Orsulic S, Osorio A, Paz-Ares L, Ramón Y Cajal T, Rothstein JH, Ruebner M, Schoemaker MJ, Shah M, Sharma R, Sherman ME, Shvetsov YB, Singh N, Steed H, Storr SJ, Talhouk A, Traficante N, Wang C, Whittemore AS, Widschwendter M, Wilkens LR, Winham SJ, Benitez J, Berchuck A, Bowtell DD, Candido Dos Reis FJ, Campbell I, Cook LS, DeFazio A, Doherty JA, Fasching PA, Fortner RT, García MJ, Goodman MT, Goode EL, Gronwald J, Huntsman DG, Karlan BY, Kelemen LE, Kommoss S, Le ND, Martin SG, Menon U, Modugno F, Pharoah PD, Schildkraut JM, Sieh W, Staebler A, Sundfeldt K, Swerdlow AJ, Ramus SJ, Brenton JD. p53 and ovarian carcinoma survival: an Ovarian Tumor Tissue Analysis consortium study. *J Pathol Clin Res*. 2023 May;9(3):208-222. doi: 10.1002/cjp2.311. Epub 2023 Mar 22. PMID: 36948887
  33. [Stowers P](#), Heck R, Csiszar K, [Kaneshiro B](#). Just-word beliefs and community-level abortion stigma: An exploratory survey. *Contraception*. 2023 Jun;122:109979. doi: 10.1016/j.contraception.2023.109979. Epub 2023 Feb 16. PMID: 36804051
  34. Pearlman Shapiro M, Myo M, [Chen T](#), Nathan A, [Raidoo S](#). Remote Provision of Medication Abortion and Contraception Through Telemedicine. *Obstet Gynecol*. 2023 Jun 1;141(6):1056-1061. doi: 10.1097/AOG.0000000000005205. Epub 2023 Apr 13. PMID: 37054393
  35. Hori K, Hori K, [Kosasa T](#), Walker B, Ohta A, Ahn HJ, [Huang TTF](#). Comparison of euploid blastocyst expansion with subgroups of single chromosome, multiple chromosome, and segmental aneuploids using an AI platform from donor egg embryos. *J Assist Reprod Genet*. 2023 Jun;40(6):1407-1416. doi: 10.1007/s10815-023-02797-w. Epub 2023 Apr 18. PMID: 37071320
  36. May T, Bernardini M, Lheureux S, Aben KKH, Bandera EV, Beckmann MW, Benitez J, Berchuck A, Bjørge L, [Carney ME](#), Cramer DW, deFazio A, Dörk T, Eccles DM, Friedlander M, García MJ, Goode EL, Hein A, Høgdall CK, Jensen A, Johnatty S, Kennedy CJ, Kiemeny LA, Kjær SK, Kupryjańczyk J, Matsuo K, McGuire V, Modugno F, Paddock LE, Pejovic T, Phelan CM, Riggan MJ, Rodriguez-Antona C, Rothstein JH, Sieh W, Song H, Terry KL, van Altena AM, Vanderstichele A, Vergote I, Thomsen LCV, Webb PM, Wentzensen N, Wilkens LR, Ziogas A, Jiang H, Tone A; Clinical parameters affecting survival outcomes in patients with low-grade serous ovarian carcinoma: an international multicentre analysis. Ovarian Cancer Association and the Australian Ovarian Cancer Study Group. *Can J Surg*. 2023 Jun 27;66(3):E310-E320. doi: 10.1503/cjs.017020. Print 2023 May-Jun. PMID: 37369443
  37. [Stowers P](#), Fontanilla T, Elia J, Salcedo J, [Kaneshiro B](#), [Tschann M](#), [Soon R](#). A qualitative study of perspectives on research participation among individuals who recently experienced an abortion in Hawai'i. *Contraception*. 2023 Jun 28:110107. doi: 10.1016/j.contraception.2023.110107. Online ahead of print. PMID: 37390947
  38. [Huang TTF](#), Kosasa T, Walker B, Ohta A, Arnett C, Huang CTF, Ahn J. JSM Selection of blastocysts for transfer using quantitative bioassay of blastocoel expansion rather than standard morphology grading. *Invitro Fertil* 4(1): 1025 June 2023
  39. Pearlman-Shapiro M, Myo M, [Chen T](#), Nathan A, [Raidoo S](#). Remote Provision of Medication Abortion and Contraception Through Telemedicine. *Obstet Gynecol*. 2023 Jun 1; 141(6):1056-1061. Doi:10.1097/AOG.0000000000005205. Epub 2023 April 13. PMID: 37054393

Research Productivity of UH OB/GYN Abstract Presentations  
**Faculty, Fellows, Residents, and Medical Students**  
 Publications & Abstracts July 2022-June 2023

1. [Chen T](#). Status of Abortion Rights & Access in Hawaii - interdisciplinary Panel/Q&A. Rise up 4 Abortion Rights Hawai'i. August 2022, Honolulu, Hawaii [Panel Discussion]



2. [Cochrane B](#), [Pangilinan M](#).  
Using buprenorphine to treat Kratom use disorder in pregnancy. California Society of Addiction Medicine, August 2022, San Diego, California [poster presentation]
3. Panova N, Goo C, Matsui F, [Stowers P](#).  
Assessing the Value of a Gynecology Journal Club in a Rural Community. American College of Obstetrics and Gynecology (ACOG) Annual District Meeting for District V, VIII, and IX. September 2022, Wailea, Hawaii [poster presentation]
4. Foglia L, Leininger W, Magann P, [Olson H](#), Rollene N, Storey J, Teneyuque N.  
Career Transition Panel. Armed Forces District Annual Meeting, October 2022, Las Vegas, Nevada [panel discussion]
5. [Huang TTF](#), Walker B, Arnett C, Huang C, [Kosasa T](#).  
Evidence that non-invasive dynamic measurements of trophoblast epithelial expansion using time-lapse can identify blastocysts with clinical pregnancy rates comparable to euploids. American Society for Reproductive Medicine Annual Meeting, October 2022, Anaheim, California [poster presentation]
6. [Chen T](#).  
Controversies in Family Planning, Hawaii American College of Obstetrics and Gynecology (ACOG) Section Annual Meeting, November 2022. [Panel discussion]
7. [Chen T](#).  
Our Post-Roe world - what is the status of abortion in Hawaii? An Interdisciplinary Panel/Q&A. John A. Burns School of Medicine, November 2022, Honolulu, Hawaii [Panel discussion]
8. Delafield R, [Chang A](#), Wong H, Vang C, Aitaoto N, Kaholokula JK.  
Cultural Adaptation of a Maternity Care Measure for Native Hawaiian and Pacific Islanders. 2022 American Public Health Association APHA Annual Meeting – Perinatal & women’s Health, November 2022, Boston, Massachusetts [oral presentation]
9. Carrazana E, Kim N, Tan C, Ma E, [Kutlu S](#), Mitchell C, Viereck J, Vajjala V, Liow K.  
Evaluating whether EEG could predict Alzheimer’s Disease onset in preclinical patients with the apoe4 allele: an update. American Epilepsy Society Annual Meeting, December 2022, Nashville, Tennessee [poster presentation]
10. [Divya D](#), Pearlman-Shapiro M, Kahili-Heede M, [Kaneshiro B](#).  
No test medication abortion: a systematic review. Society of Family Planning Annual Meeting, December 2022, Baltimore, Maryland [poster presentation]
11. Kerestes C, [Tschann M](#), Pearlman-Shapiro M, Berry E, Gawron L, [Kaneshiro B](#).  
Self-determination of eligibility for early medication abortion without ultrasound using a history-based tool – LMP-SURE. Society of Family Planning Annual Meeting, December 2022, Baltimore, Maryland [oral presentation]
12. [Maykin M](#), [Mercer E](#), [Saiki K](#), [Kaneshiro B](#), [Miller C](#), [Tsai P-J](#).  
Furosemide to Lower Antenatal Severe Hypertension (FLASH): A Randomized Placebo-Controlled Trial. Society for Maternal-Fetal Medicine Annual Pregnancy Meeting, February 2023, San Francisco, California [poster presentation]
13. [Saiki K](#), [Lee MJ](#), Benny P, Gragas A, Stevens J, [Yamasato K](#).  
Social needs screening and perceived stress scale scores in a pregnant cohort. Society for Maternal-Fetal Medicine 43rd Annual Pregnancy Meeting, February 2023, San Francisco, California [poster presentation]
14. [Sullivan C](#), [Lee MJ](#), [Bartholomew L](#), Mody R.  
An analysis of early screening for impaired glucose tolerance via Hemoglobin A1c in place of an 1 hour glucose tolerance test. Society of Maternal Fetal Medicine Annual Meeting, February 2023, San Francisco [poster presentation]
15. [Hiraoka M](#), [Chang A](#), [Saito-Tom L](#).  
Navigating the SOAP: Insights Gained from an 8-year Obstetrics and Gynecology Residency Program Experience. Council on Resident Education in Obstetrics and Gynecology (CREOG) & the Association of Professors of Gynecology and Obstetrics (APGO) Annual Meeting, March 2023, Washington D.C. [roundtable discussion]
16. Mikrut E, Kerwin R, Shah S, Hamachi A, Lee H, [Tschann M](#), Bullock H.  
Access to Misoprostol in Arizona Research Pharmacies: A simulated patient study. Phoenix Society of Obstetrics and Gynecology Annual Meeting, April 2023, Phoenix, Arizona [oral presentation]
17. [Miller C](#), Qin Yujia, Benny P, Riel J, [Lee MJ](#).  
Maternal Gut Microbiome Affects Neonatal Meconium Colonization. Society for Reproductive Investigation 70th Annual Meeting, March 2023, Brisbane, Australia [poster presentation]
18. [Saiki K](#), Riel J, [Stevenson M](#), Gragas A, Benny P, [Yamasato K](#), [Lee MJ](#).  
Social determinants of health, perceived stress, and pregnancy outcomes in Hawaii: A prospective study of 155 patients. Society for

Reproductive Investigation 70th Annual Meeting, March 2023, Brisbane, Australia [oral presentation]

19. [Saito-Tom L.](#)  
Enhancing Direct Observation of Medical Students during the Obstetrics and Gynecology Clerkship. Assessment for Curricular Improvement Virtual Poster Exhibit, March 2023, UH Manoa (online), Hawaii [poster presentation]
20. [Sullivan C](#), [Mercer E](#), [Huang T](#), Thompson K, [Zalud I](#), [Lee MJ](#).  
A case of monozygotic-twin pregnancy with differing phenotypic sex. American Institute of Ultrasound in Medicine. March 2022, San Diego, California [poster presentation]
21. Weingrill RB, [Garcia J](#), Benny P, Riel J, Urschitz J, [Lee MJ](#).  
Differential expression of plasma exosomal microRNA in Fetal Growth Restricted pregnancies. Society for Reproductive Investigation, March 2023, Melbourne, Australia [poster presentation]
22. Weingrill RB, [Lee MJ](#), Benny PB, [Garcia J](#), Riel J, [Miller C](#), [Saiki K](#), Azevedo LF, Souza ST, Fonseca EJS, D'Amato FOS, Silva UR, Marques ALX, Dutra ML, Boerbely AU, Urschitz J. Microplastic accumulation in placentas from births in Hawaii. Society for Reproductive Investigation, March 2023, Melbourne, Australia [poster presentation]
23. Brown B, [Olson HL](#).  
In the MedEd Studio: Applying Best Practices from Film and Animation to Education Multimedia development. AAMC Western Group Collaborative Spring Conference, April 2023, Honolulu, Hawaii [workshop]
24. [Dethier D](#), Wong Z, Ronquillo T, [Tschann M](#), Roman M, Chen J, [Soon R](#), [Kaneshiro K](#).  
Self-performed blood typing: a promising adjunct to no-test and self-managed abortion. National Abortion Federation Annual Meeting, April 2023, Denver, Colorado [poster presentation]
25. Koenig LR, Raymond EG, Gold M, Boraas C, [Kaneshiro B](#), Winikoff B, Coplon C, Upadhyay UD.  
Time to Care Among Patients Who Receive Medication Abortion with History-Based Screening in the United States. Population Association of America 2022 Annual Meeting. April 2022, Atlanta, Georgia [poster presentation]
26. Nyquist JG, [Olson HL](#), Wu V.  
The Educator's Guide to Emotional Intelligence. AAMC Western Group Collaborative Spring Conference, April 2023, Honolulu, Hawaii [workshop]
27. [Saiki K](#), [Tsai PJ](#), Banerjee D.  
Utilization of a Multidisciplinary Cardio-Obstetrics Program to Optimize Maternal and Neonatal Outcomes in Hawaii. Hawaii State Patient Safety Conference, April 2023, Honolulu, Hawaii [poster presentation]
28. [Sullivan C](#), Michel A, Fontenot H, [Lee MJ](#).  
Street healthcare for Maternity Patients on Oahu. John A. Burns School of Medicine Biomedical Symposium, April 2022, Honolulu, Hawaii [poster presentation]
29. [Yang N](#), Stafford M, Prabhudesai D, [Michelle P](#).  
Impact of telehealth on visit attendance for women with opioid use disorder. Hawaii Addictions Conference, April 2023, Honolulu, Hawaii [oral presentation]
30. Sherriff A, Abella M, [Pawar D](#), [Manayan O](#), [Collins R](#).  
Racial disparities in total abdominal hysterectomy postoperative outcomes: analysis including American Indian or Alaska Natives and Native Hawaiian or Pacific Islanders. American College of Obstetricians and Gynecologists (ACOG) annual Clinical and Scientific Meeting, May 2023, Baltimore, Maryland [poster presentation]
31. Dever CO, Michel A, [Sullivan C](#), [Lee MJ](#), Fontenot H.  
Patient's perceptions on a model of street healthcare. The Association of Women's Health, Obstetric and Neonatal Nurses Conference, June 2023, New Orleans, Louisiana [poster presentation]

*Special thanks to Ann Chang, MD, Reni Soon, MD, and April Binari, MBA for serving as Editors for this 2022/2023 Departmental Annual Report.*

